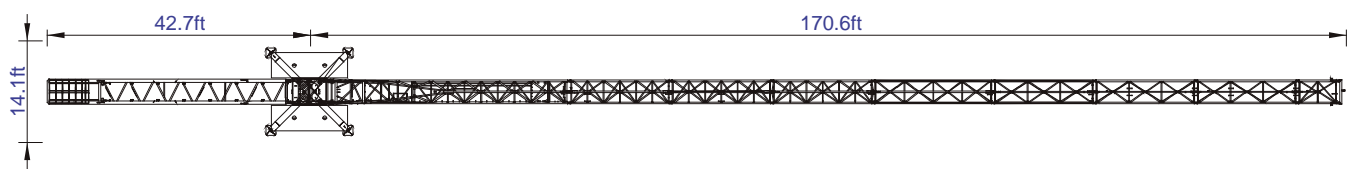
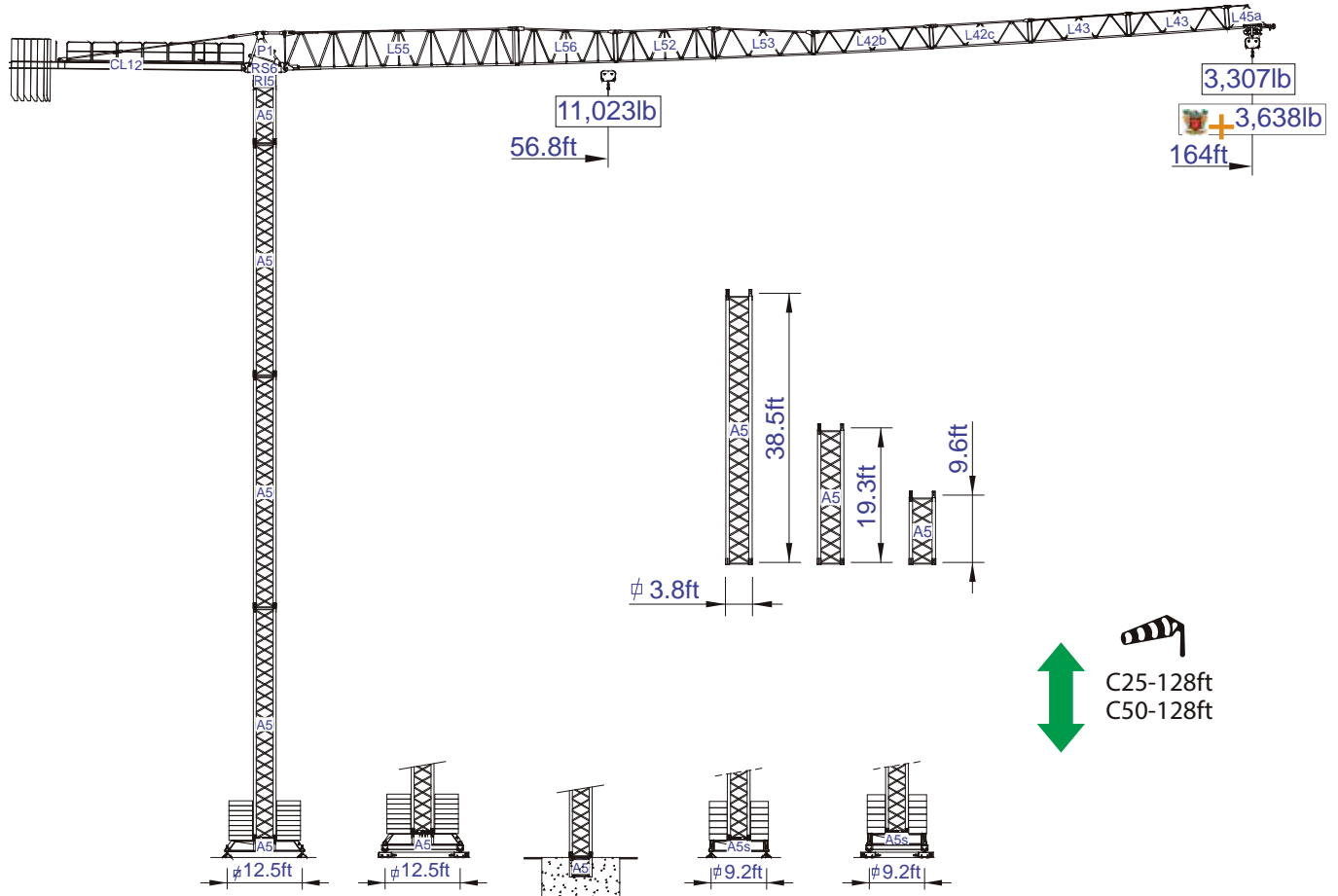




STF 5015

5T - 11 023lb

Data Sheet
Imperial



Headquarters

3620 S. 40th Street, Phoenix, AZ, 85040 USA
+1 (480) 993 3302

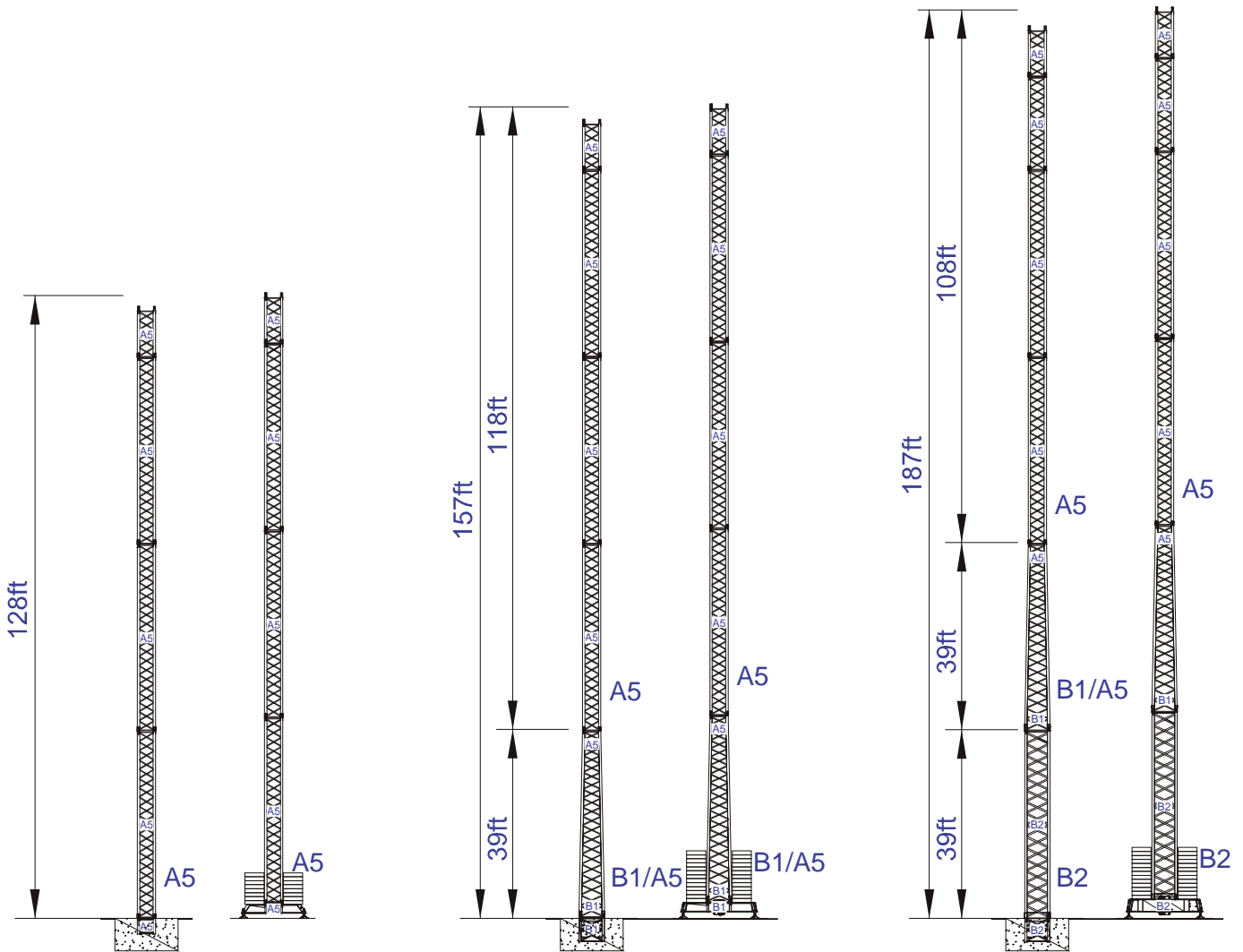
Factory

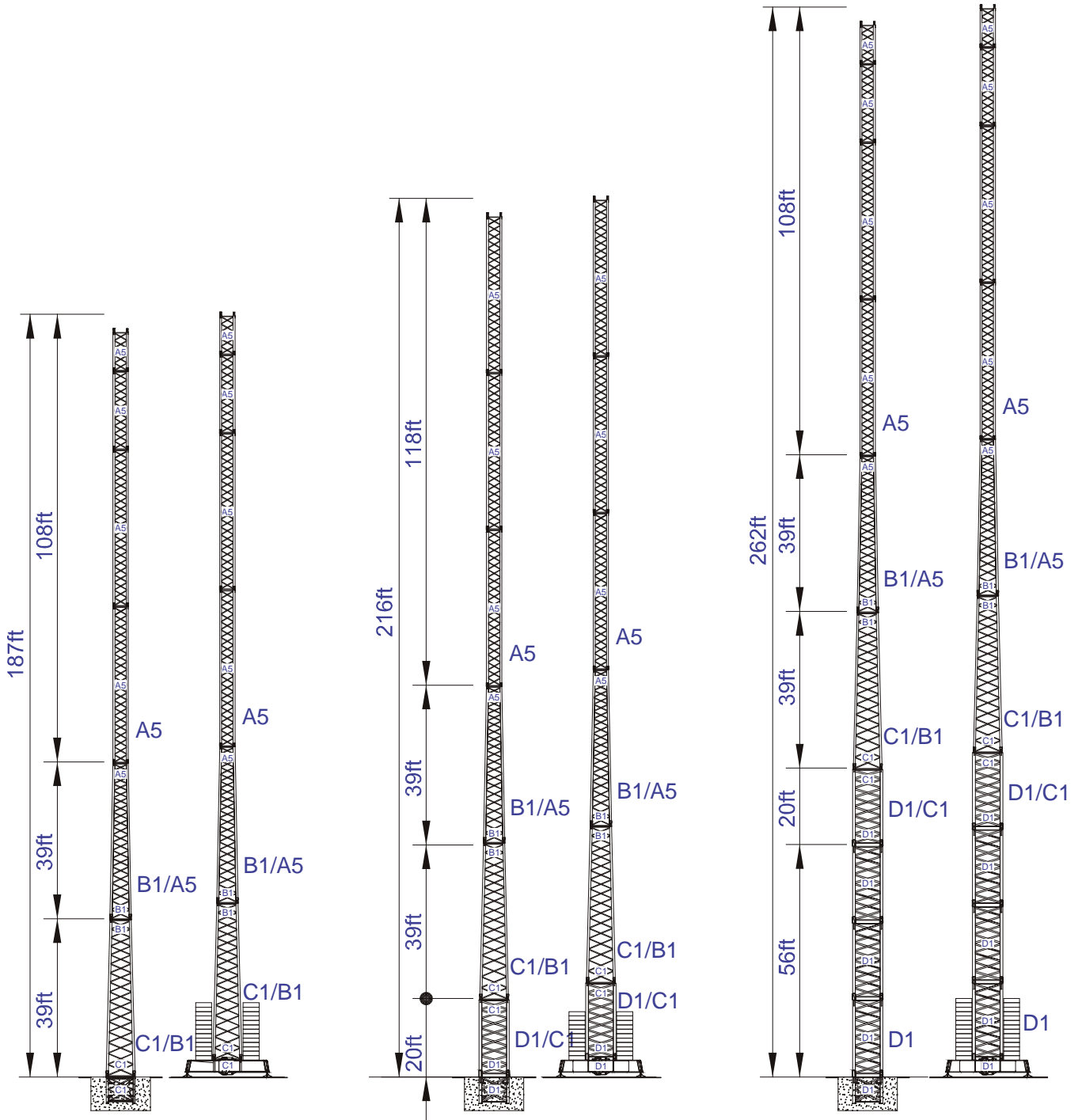
Zona Industrial de Canas de Senhorim - EN 234, 3525-040 Canas de Senhorim - Portugal
+351 232 673 530 info@staffordsoima.com

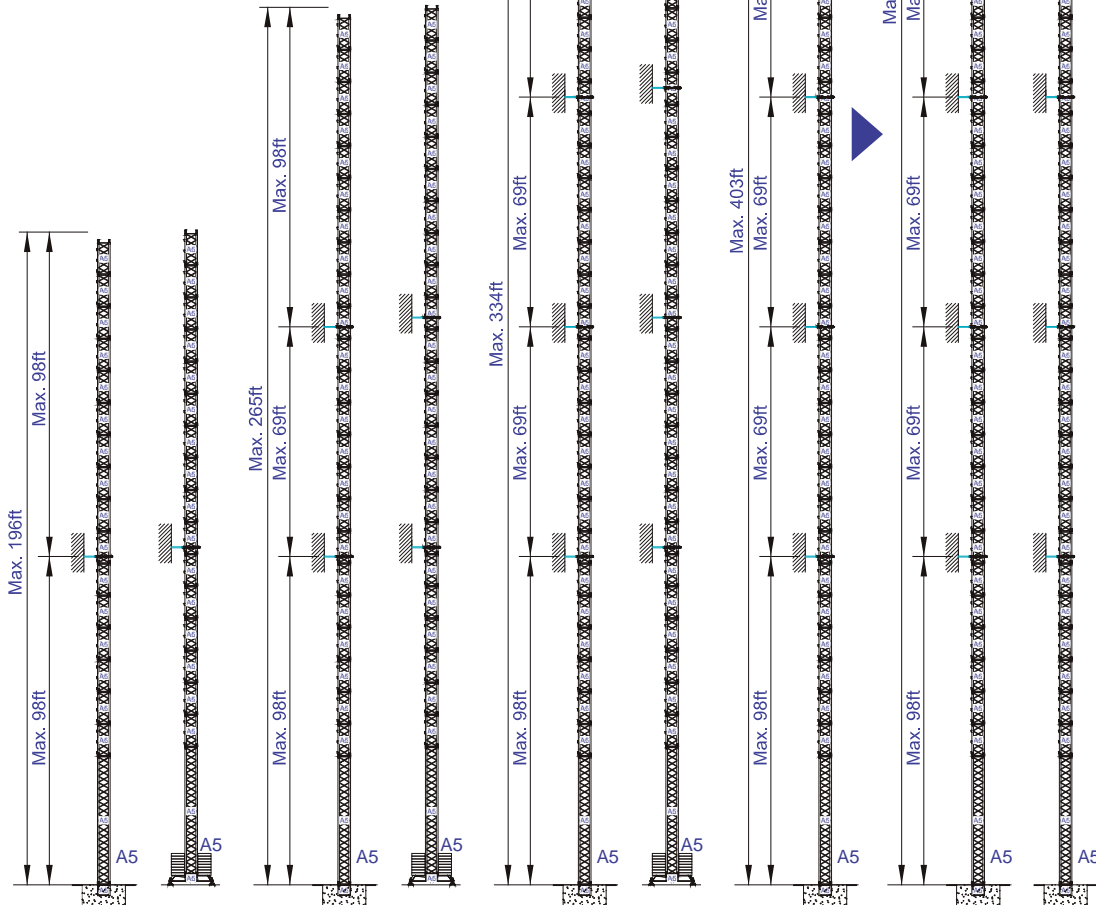
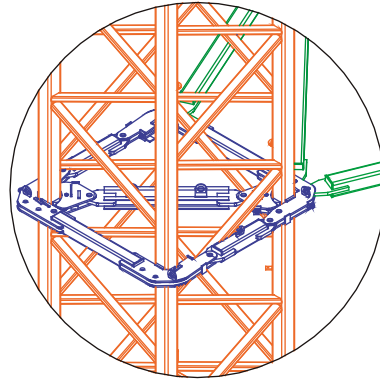
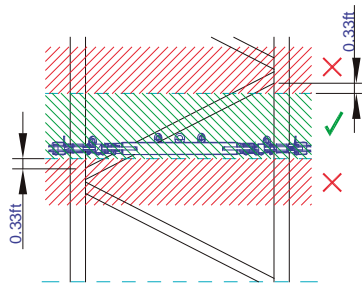
staffordsoima.com



Empresa certificada no âmbito da Conceção, Fabrico e Serviço Pós-venda de Gruas Soima e componentes.

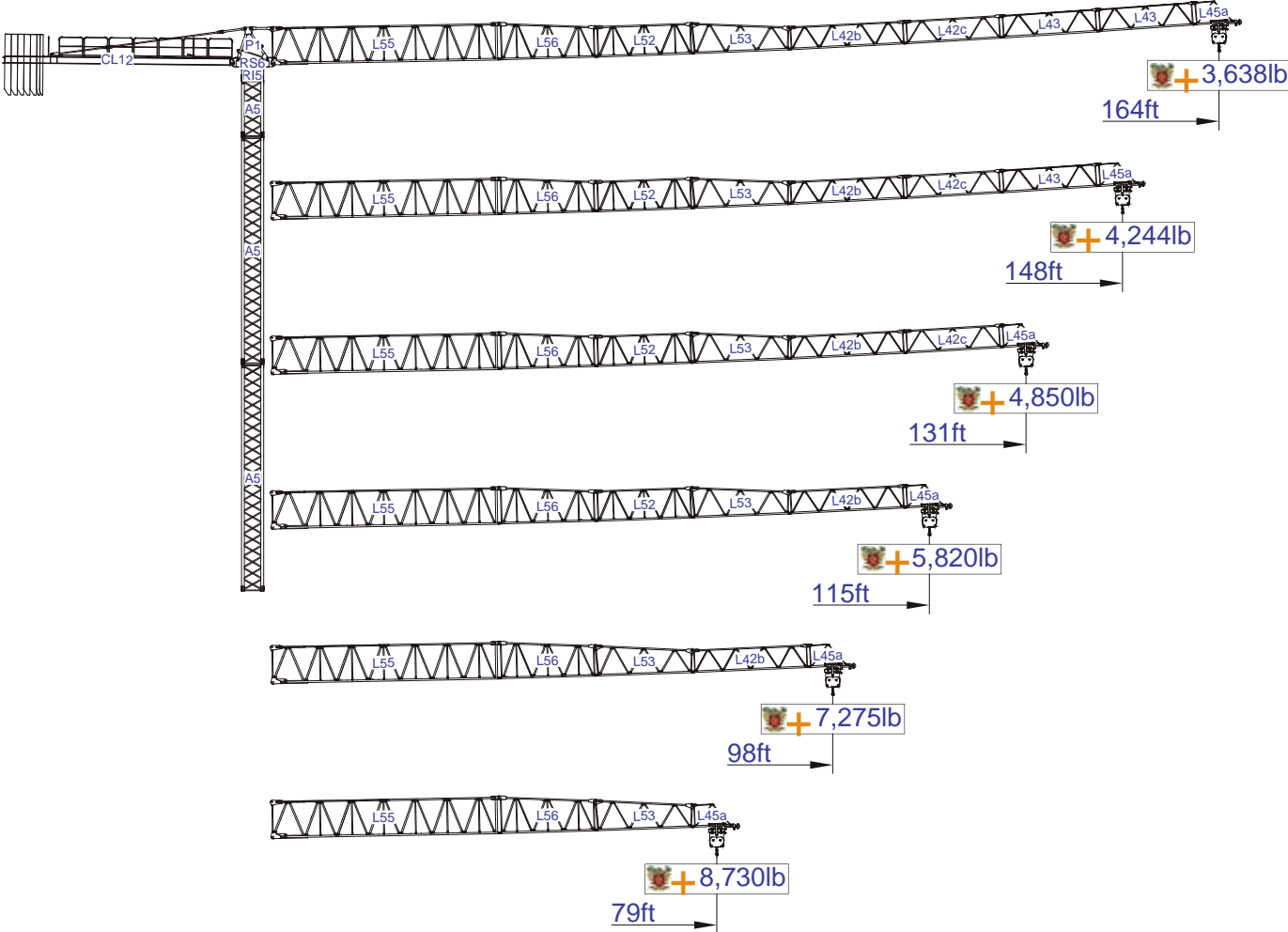






More options



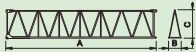




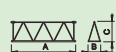







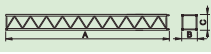

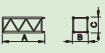
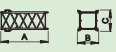

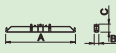
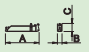
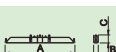



SACS 10%










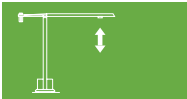
| Diagram | Diagram | Icons | | Load Values | | | | | | | | | | Unit | |
|---------|--------------------------------------|----------|---------|-------------|--------|--------|-------|-------|-------|-------|-------|-------|----|------|--|
| | | Icon 1 | Icon 2 | 33 | 49 | 59 | 79 | 98 | 115 | 131 | 148 | 164 | | | |
| | | 11,020lb | 5,510lb | | | | | | | | | | | | |
| 164 | 26,460lb 5x4,410lb + 2x2,205lb | 57,8 | 107,6 | 5,510 | 5,510 | 5,510 | 5,510 | 5,510 | 5,510 | 4,790 | 4,150 | 3,640 | lb | | |
| | | | | 11,020 | 11,020 | 11,020 | 8,640 | 6,720 | 5,620 | 4,790 | 4,150 | 3,640 | | | |
| 148 | 24,255lb 5x4,410lb + 1x2,205lb | 58,9 | 109,5 | 5,510 | 5,510 | 5,510 | 5,510 | 5,510 | 5,510 | 4,900 | 4,240 | | | | |
| | | | | 11,020 | 11,020 | 11,020 | 8,820 | 6,860 | 5,740 | 4,900 | 4,240 | | | | |
| 131 | 22,050lb 4x4,410lb + 2x2,205lb | 58,4 | 108,6 | 5,510 | 5,510 | 5,510 | 5,510 | 5,510 | 5,510 | 4,850 | | | | | |
| | | | | 11,020 | 11,020 | 11,020 | 8,740 | 6,790 | 5,680 | 4,850 | | | | | |
| 115 | 19,845lb 4x4,410lb + 1x2,205lb | 59,6 | 110,9 | 5,510 | 5,510 | 5,510 | 5,510 | 5,510 | 5,510 | | | | | | |
| | | | | 11,020 | 11,020 | 11,020 | 8,940 | 6,950 | 5,820 | | | | | | |
| 98 | 17,640lb 3x4,410lb + 2x2,205lb | 62,0 | 115,4 | 5,510 | 5,510 | 5,510 | 5,510 | 5,510 | | | | | | | |
| | | | | 11,020 | 11,020 | 11,020 | 9,340 | 7,280 | | | | | | | |
| 79 | 13,230lb 2x4,410lb + 2x2,205lb | 58,3 | 108,6 | 5,510 | 5,510 | 5,510 | 5,510 | | | | | | | | |
| | | | | 11,020 | 11,020 | 11,020 | 8,730 | | | | | | | | |
| | | lb | | Icons | | | | | | | | | | | |

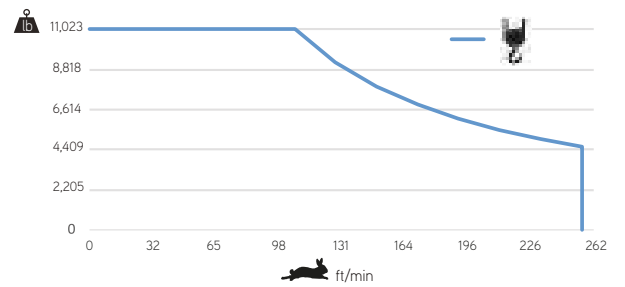
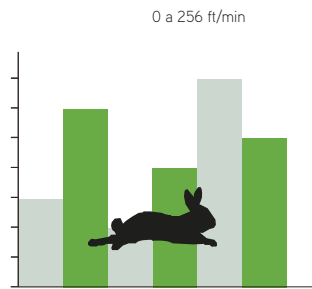


| | | | A (ft) | B (ft) | C (ft) | lb(±5%) | |
|------------------------|---|------------|--------|--------|--------|-------------------|-------|
| Jib |  | L55 | 39.21 | 3.97 | 8.53 | 6,834 | |
| |  | L56 | 17.06 | 3.81 | 6.33 | 1,301 | |
| |  | L52 | 17.06 | 3.81 | 5.41 | 1,179 | |
| |  | L53 | 17.06 | 3.81 | 5.41 | 1,124 | |
| |  | L42b | 19.95 | 3.81 | 3.97 | 1,146 | |
| |  | L42c | 16.99 | 3.81 | 3.97 | 816 | |
| |  | L43 | 16.73 | 3.81 | 3.97 | 2x573 1,146 | |
| |  | L45a | 6.89 | 3.81 | 3.97 | 265 | |
| Head turntable |  | RS6 RI5 | 7.38 | 4.43 | 6.73 | 5,820 | |
| |  | P1 | 5.45 | 4.00 | 5.64 | 1,587 | |
| Counter-jib |  | CL12 | 39.38 | 4.10 | 1.84 | 5,644 | |
| Counterweight |  | CP2 | 3.81 | 1.08 | 10.30 | 8x4,409 22,046 | |
| |  | CP3 | 3.81 | 0.54 | 10.30 | 2x2,204 4,409 | |
| Tower section |  | A5 | 39.33 | 3.81 | 3.81 | 6,790 | |
| |  | A5 | 19.93 | 3.81 | 3.81 | 3,660 | |
| |  | A5 | 10.24 | 3.81 | 3.81 | 2,183 | |
| Climbing tower section |  | A5 | 10.14 | 4.54 | 4.54 | 2,293 | |
| Foundation anchor |  | A5 | 4.18 | 3.81 | 3.81 | 992 | |
| Base Chassis |  | A5 | 18.15 | 1.64 | 2.69 | 2,756 | |
| |  | | 7.45 | 1.18 | 2.69 | 2x2,161 2,800 | |
| | | | | | | TOTAL | 5,556 |
| Base Chassis |  | A5s | 13.49 | 1.64 | 2.69 | 3,77 | |
| |  | | 6.41 | 1.18 | 2.69 | 2x1,279 2,557 | |
| | | | | | | TOTAL | 5,093 |



| | |
|---|---|
|  |  |
|  | 0 a 1 r.p.m. 2x29 ft/lbf |
|  | 0 a 196 ft/min 3 kW |
|  | 0 a 49 ft/min 2x3 kW |

| | |
|---|---|
|  |  |
|  | 0 a 256 ft/min 30 kW |



Max height of hoist

More options



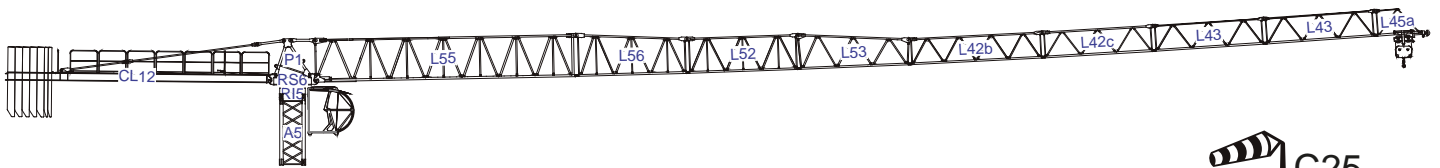
(H) Max. 433ft +



55 kVA

400 V +- 5% (50/60 Hz)

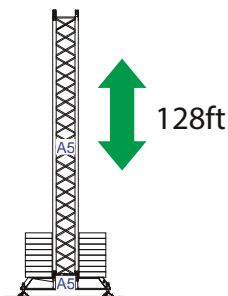
Transport



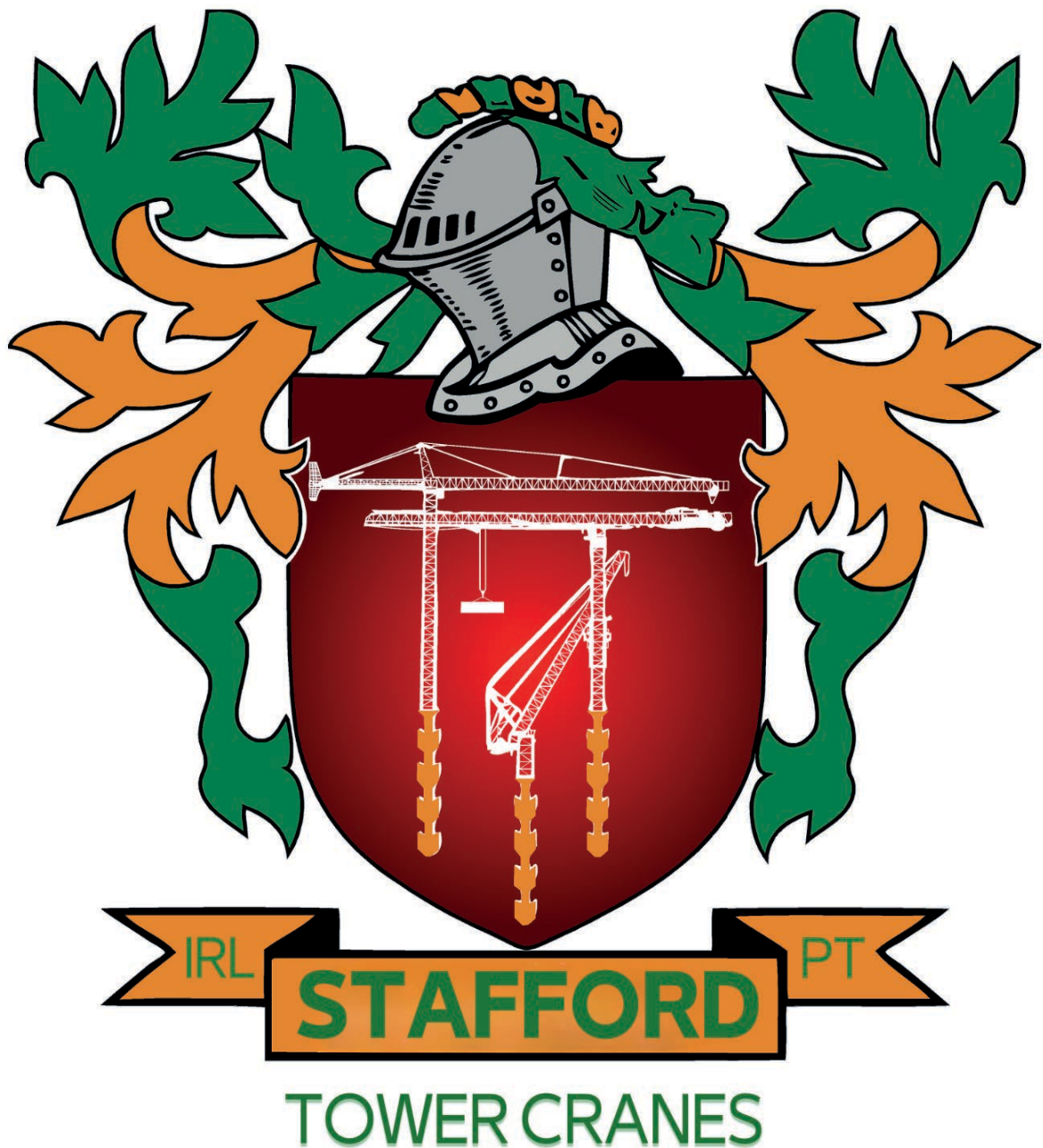
3x



3x




STF 5015



Headquarters

 3620 S. 40th Street , Phoenix , AZ, 85040 USA

 +1 (480) 993 3302

Factory

 Zona Industrial de Canas de Senhorim - EN 234, 3525-040 Canas de Senhorim - Portugal

 +351 232 673 530  info@staffordsoima.com

 staffordsoima.com