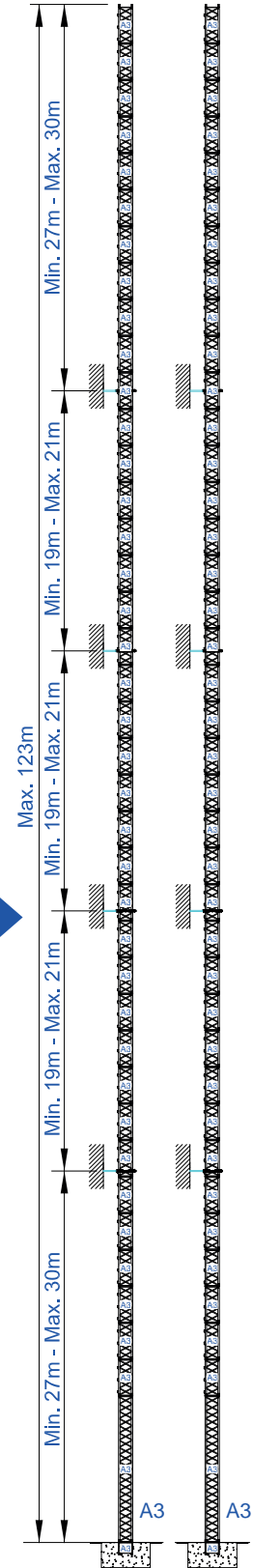
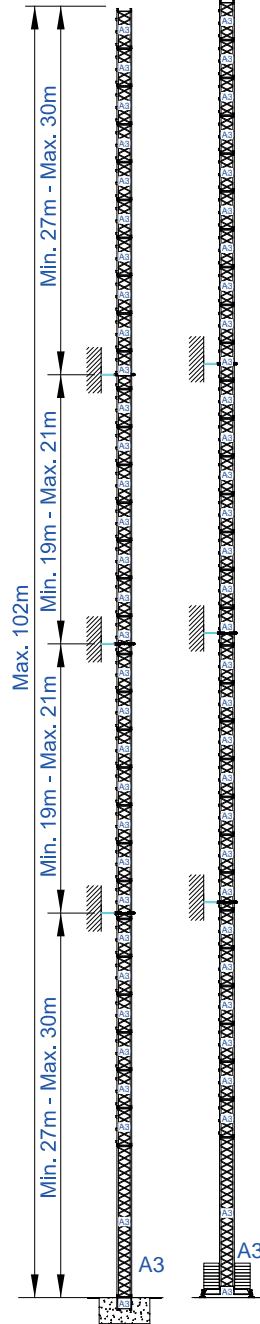
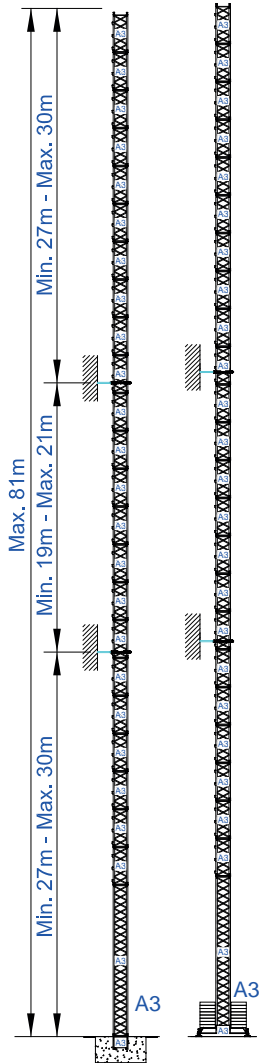
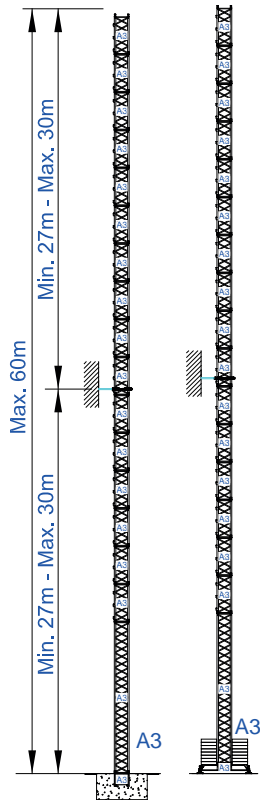
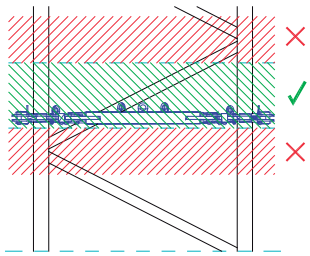
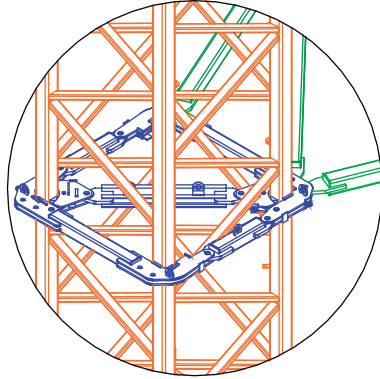
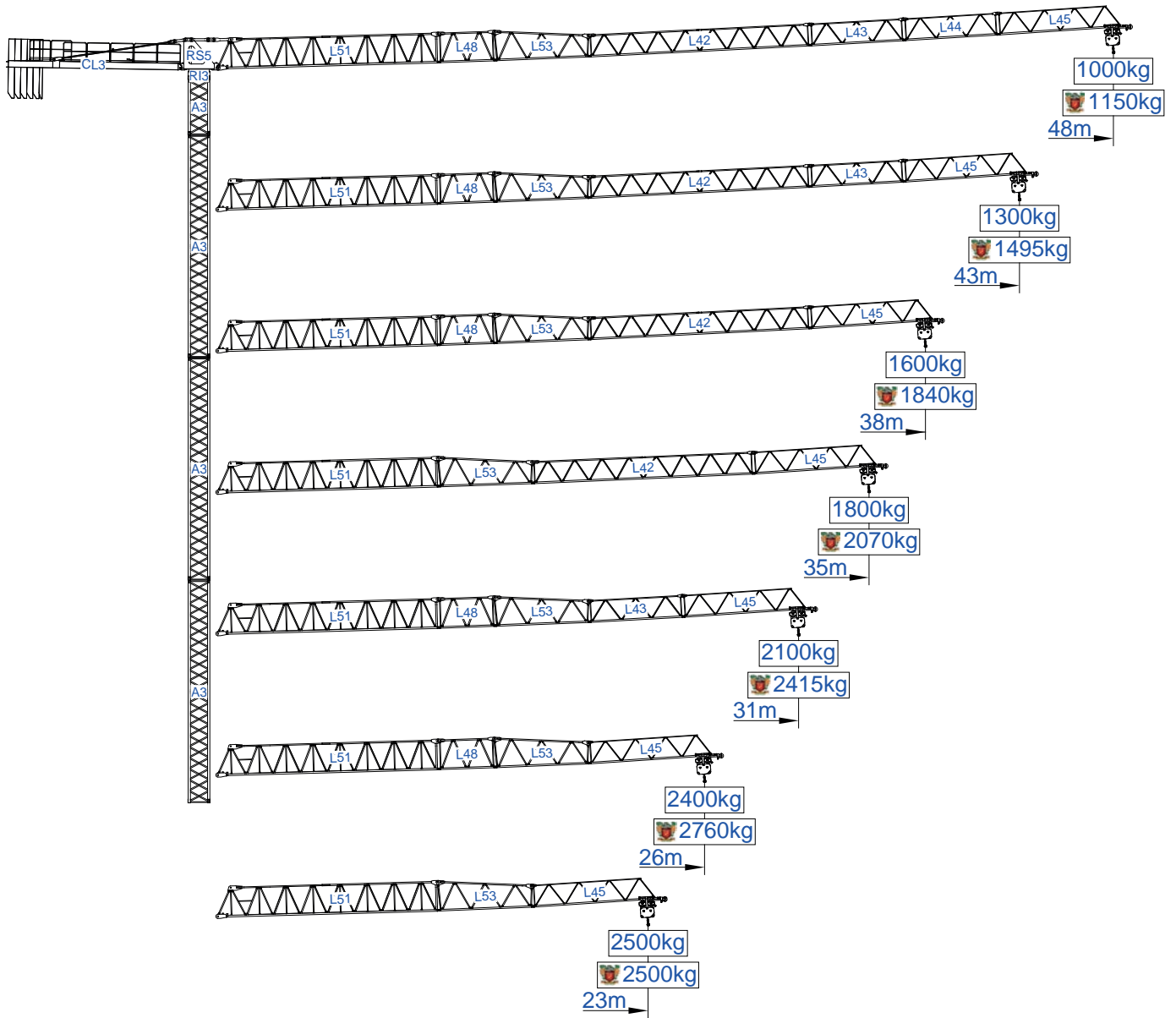


RH max. 108kN



Mor options







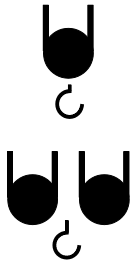
m	 2500kg									m
		23	26	31	35	38	43	48		
48	11000kg 5x2000kg + 1x1000kg	22,3	2410	2100	1710	1480	1340	1150	1000	kg
43	11000kg 5x2000kg + 1x1000kg	24,6	2500	2350	1920	1670	1510	1300		
38	10000kg 5x2000kg	25,8	2500	2480	2030	1760	1600			
35	9000kg 4x2000kg + 1x1000kg	26,3	2500	2500	2070	1800				
31	8000kg 4x2000kg	26,6	2500	2500	2100					
26	7000kg 3x2000kg + 1x1000kg	25,1	2500	2400						
23	5000kg 2x2000kg + 1x1000kg	23,0	2500							
	m									

SACS 15%



m	 2500kg									m
		23	26	31	35	38	43	48		
48	11000kg 5x2000kg + 1x1000kg	22,3	2500	2420	1970	1700	1540	1320	1150	kg
43	11000kg 5x2000kg + 1x1000kg	24,6	2500	2500	2210	1920	1740	1500		
38	10000kg 5x2000kg	25,8	2500	2500	2330	2020	1840			
35	9000kg 4x2000kg + 1x1000kg	26,3	2500	2500	2380	2070				
31	8000kg 4x2000kg	26,6	2500	2500	2420					
26	7000kg 3x2000kg + 1x1000kg	25,1	2500	2500						
23	5000kg 2x2000kg + 1x1000kg	23,0	2500							
	m									





m	Diagram	Hook Configurations		23	26	31	35	38	43	48	m
		5000 kg	2500 kg								
48	11000kg 5x2000kg + 1x1000kg	11.8	22.3	2410	2100	1710	1480	1340	1150	1000	kg
				2410	2100	1710	1480	1340	1150	1000	
43	11000kg 5x2000kg + 1x1000kg	13.0	24.6	2500	2350	1920	1670	1510	1300		
				2690	2350	1920	1670	1510	1300		
38	10000kg 5x2000kg	13.6	25.8	2500	2480	2030	1760	1600			
				2840	2480	2030	1760	1600			
35	9000kg 4x2000kg + 1x1000kg	13.9	26.3	2500	2500	2070	1800				
				2900	2530	2070	1800				
31	8000kg 4x2000kg	14.0	26.6	2500	2500	2100					
				2930	2560	2100					
26	7000kg 3x2000kg + 1x1000kg	13.2	25.1	2500	2400						
				2750	2400						
23	5000kg 2x2000kg + 1x1000kg	12.2	23.0	2500							
				2500							
m											

SACS 15%



m	Diagram	Hook Configurations		23	26	31	35	38	43	48	m
		5000 kg	2500 kg								
48	11000kg 5x2000kg + 1x1000kg	11.8	22.3	2500	2420	1970	1700	1540	1320	1150	kg
				2770	2420	1970	1700	1540	1320	1150	
43	11000kg 5x2000kg + 1x1000kg	13.0	24.6	2500	2500	2210	1920	1740	1500		
				3090	2700	2210	1920	1740	1500		
38	10000kg 5x2000kg	13.6	25.8	2500	2500	2330	2020	1840			
				3270	2850	2330	2020	1840			
35	9000kg 4x2000kg + 1x1000kg	13.9	26.3	2500	2500	2380	2070				
				3340	2910	2380	2070				
31	8000kg 4x2000kg	14.0	26.6	2500	2500	2420					
				3370	2940	2420					
26	7000kg 3x2000kg + 1x1000kg	13.2	25.1	2500	2500						
				3160	2760						
23	5000kg 2x2000kg + 1x1000kg	12.2	23.0	2500							
				2880							
m											

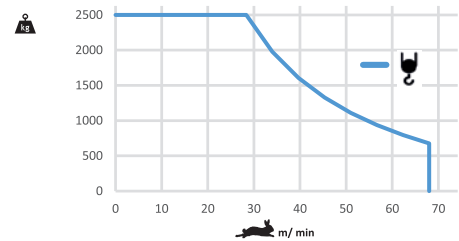


		A (mm)	B (mm)	C (mm)	kg (±5%)	
Jib / Lança / Fleche / Braccio		L51	11950	1300	2250	2900
/ Ausleger / кливер		L48	3190	1160	1650	350
		L53	5200	1160	1650	510
		L42	11820	1160	1210	820
		L43	5100	1160	1210	260
		L44	5100	1160	1210	230
		L45	6800	1160	1210	290
	Head turntable		RS5 RI5	2150	1320	2200
Counter-jib / Contra lança / Contre-flèche		CL3	9350	1380	560	2000
Counterweight / Contrapeso / Contrepoids / Gegengewicht / Противовес		CP1	1160	330	3140	5x2000 10000
		CP2	1160	165	3140	1x1000 1000
Tower section / torre / Coupe tour / Sezione torre / Turmabschnitt / Секция башни		A3	11985	1180	1180	2450
		A3	6075	1180	1180	1300
		A3	3120	1180	1180	720
Climbing tower section		A3	3120	1385	1385	810
Foundation anchor / Tramo encastrar /		A3	1200	1160	1160	350
Base Chassis		A3	5525	500	635	1075
			2670	360	635	2x535 1070
TOTAL					2145	

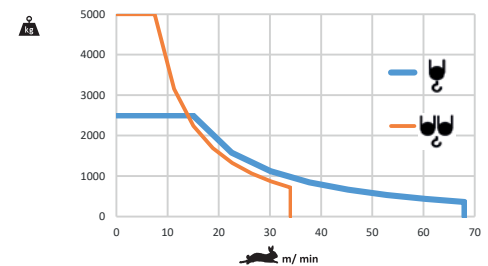


	0 a 1 r.p.m.	50 N.m
	0 a 50 m/min	2,2 kW
	15 m/min	2x3 kW

	0 a 68 m/min	11kW



	0 a 68 m/min	11kW
	0 a 34 m/min	11kW

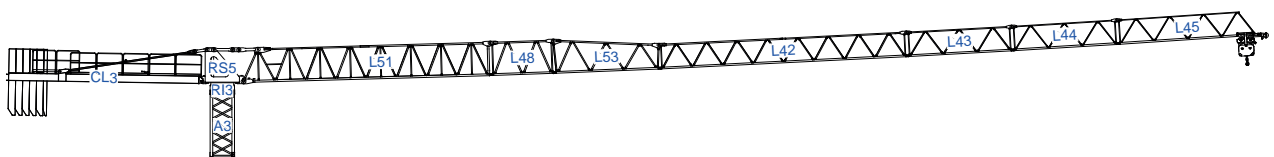


	23 kVA
	400 V +- 5% (50/60 Hz)

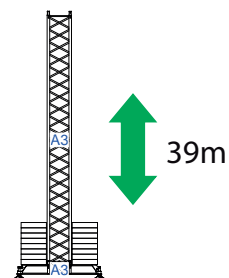
Max height of hoist

(H)Max. 88m + More options

Transport / Transporte / Transport / Trasporto / Transport / Транспорт

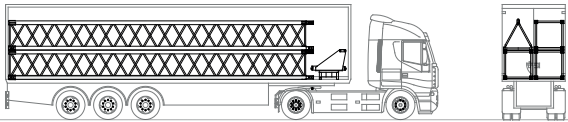


C25

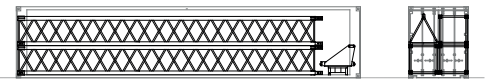


STF 4810

1

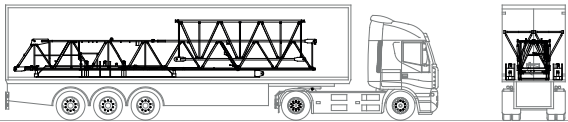


3xA3-12m+1xA3-3m+L42+Ri5+RS5

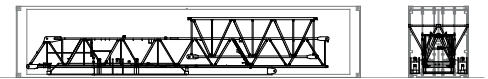


3xA3-12m+1xA3-3m+L42+Ri5+RS5

2

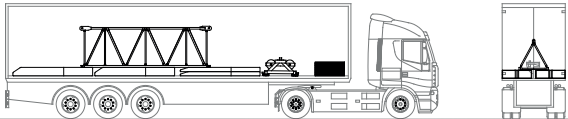


1xCH1+2xCH2+CL3+L51+L43+L45

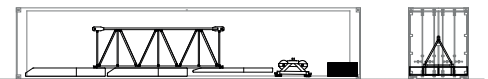


1xCH1+2xCH2+CL3+L51+L43+L45

3

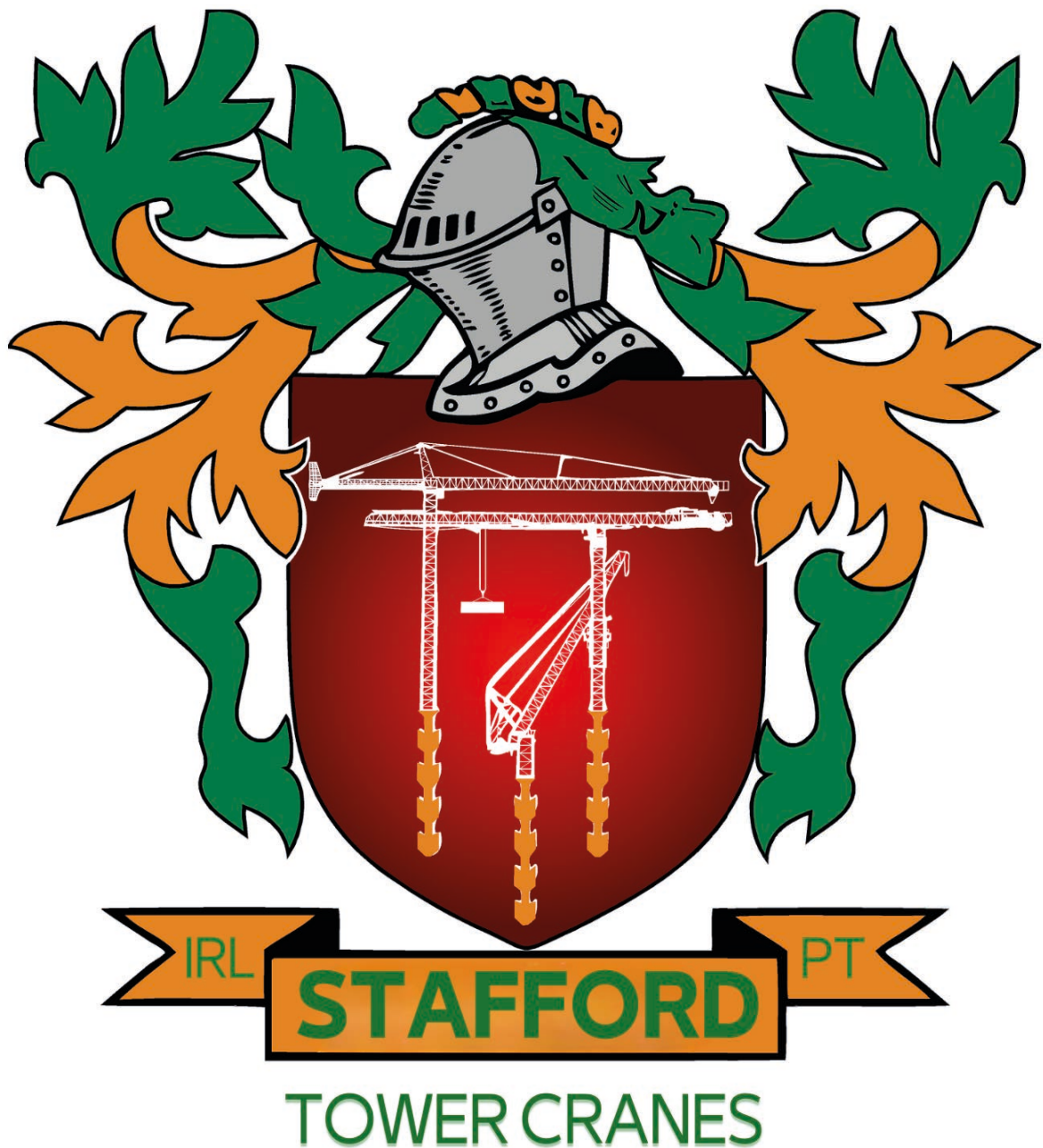


L44+L48+L53+5xCP2+1xCP3




L44+L48+L53+5xCP2+1xCP3





Headquarters

 3620 S. 40th Street , Phoenix , AZ, 85040 USA

 +1 (480) 993 3302

Factory

 Zona Industrial de Canas de Senhorim - EN 234, 3525-040 Canas de Senhorim - Portugal

 +351 232 673 530  sales@staffordtowercranes.com

 staffordtowercranes.com