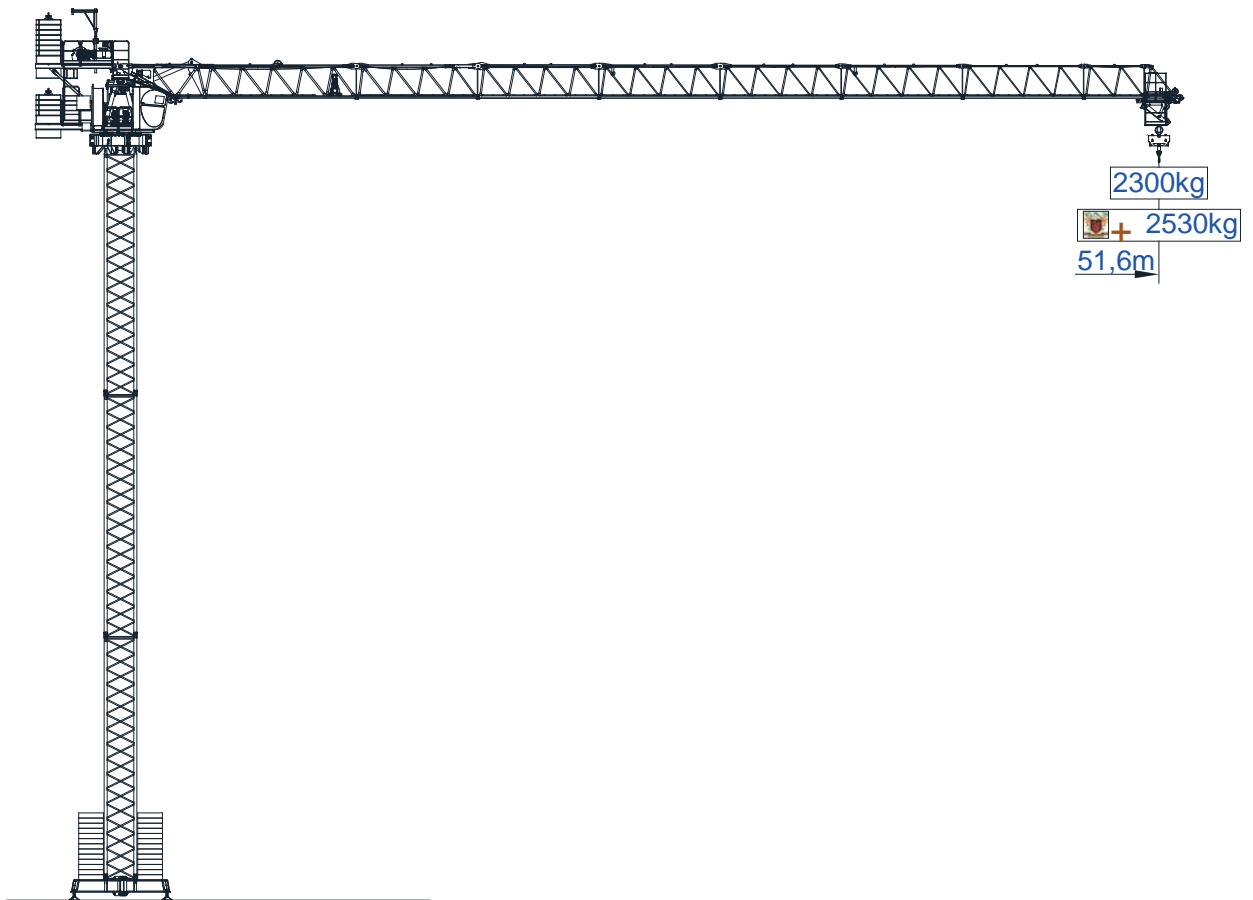




STLH 150

Data Sheet / Catalogo / Fiche Technique / Scheda Dati
 Datenblatt / техническая спецификация
 Metric / Métrico / Métrique / Metrico / Metrisch / метрика



Headquarters

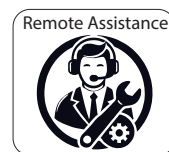
3620 S. 40th Street, Phoenix, AZ, 85040 USA
 +1 (480) 993 3302

Factory

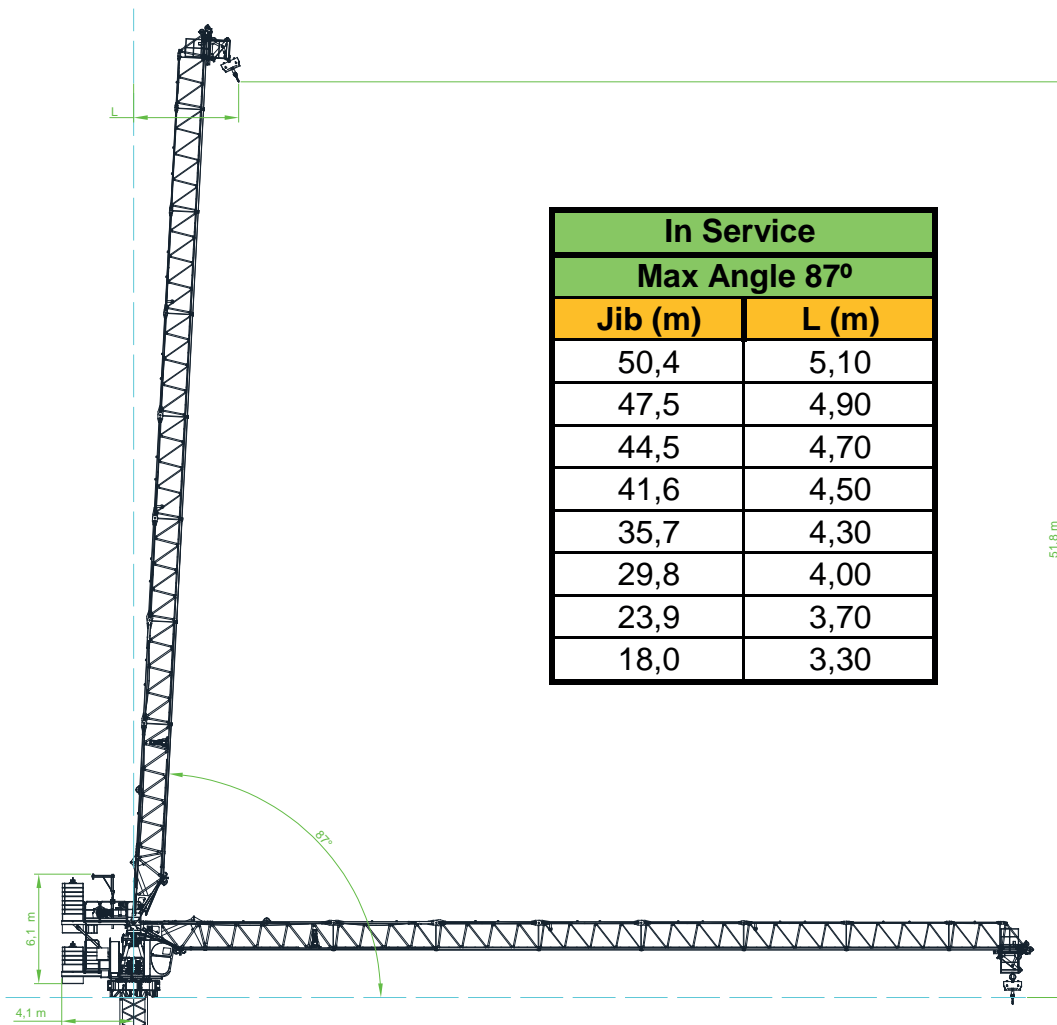
Zona Industrial de Canas de Senhorim - EN 234, 3525-040 Canas de Senhorim - Portugal
 +351 232 673 530 ✉ sales@staffordtowercranes.com

www.staffordtowercranes.com

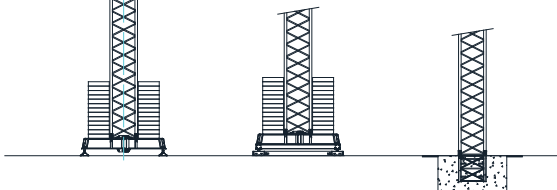
v.1.000-03/25



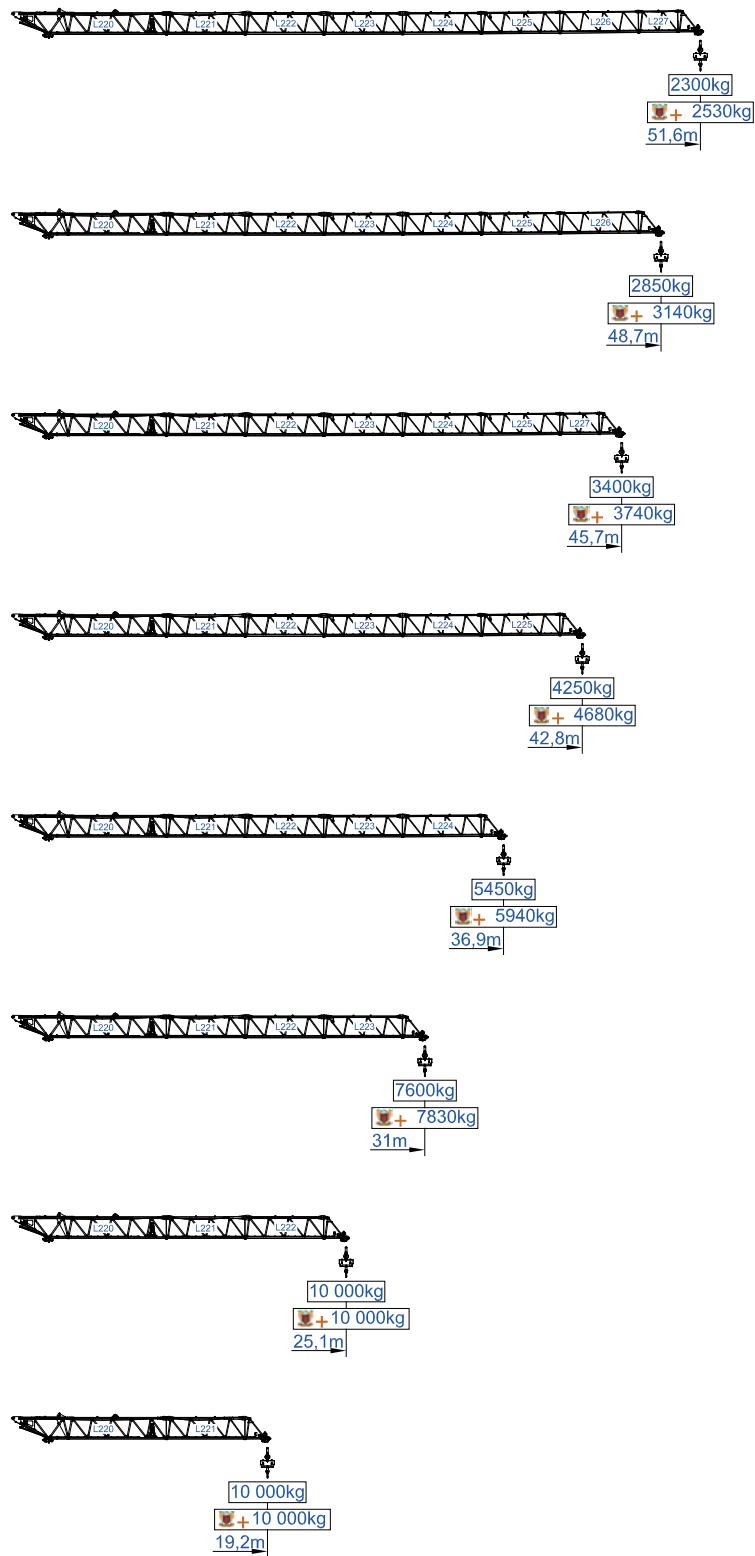
Empresa certificada no âmbito da Conceção, Fabrico e Serviço Pós-venda de Gruas Soima e componentes



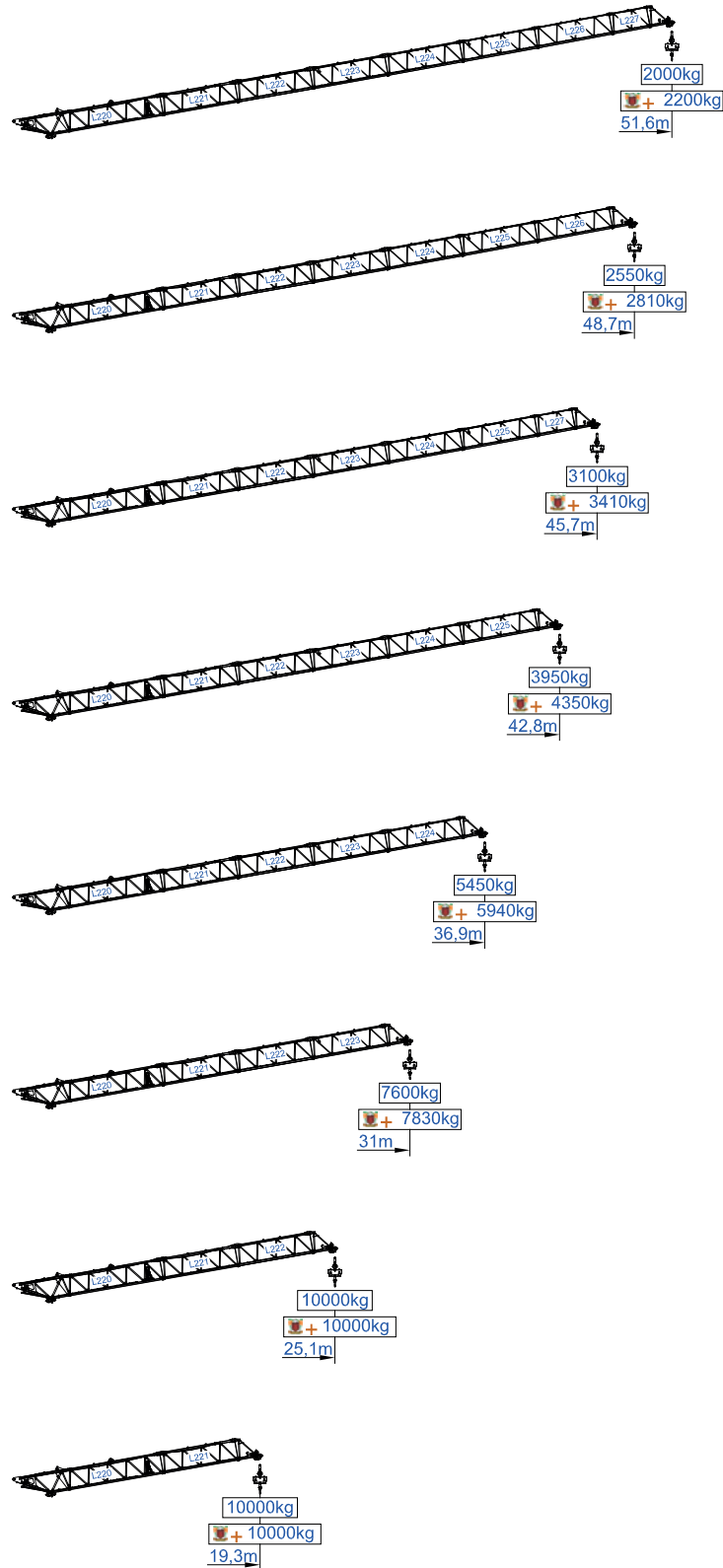
Out of Service		
Jib (m)	Degree (°)	(m)
50,4	80,0	9,69
47,5	80,0	9,18
44,5	80,0	8,67
41,6	80,0	8,15
35,7	78,0	8,34
29,8	75,0	8,62
23,9	70,0	9,05








Flat Top Mode








Luffer Mode



Flat Top Mode

															m
	10,000	5000	12	14	16	18	24	30	35,5	41,5	44,5	47,5	50,5	kg	
51,6	16,70	28,80	5,000						4,730	3,780	3,050	2,770	2,520	2,300	kg
			10,000			9,050	6,200	4,590	3,640	2,910	2,620	2,370	2,150		
48,7	18,00	31,30	5,000						4,240	3,440	3,120	2,850	kg		
			10,000			6,890	5,140	4,090	3,290	2,970	2,700				
45,7	19,10	33,20	5,000						4,590	3,740	3,400	kg			
			10,000			7,440	5,560	4,440	3,590	3,250					
42,8	20,90	36,60	5,000						4,250	kg					
			10,000			8,370	6,290	5,050	4,100						
36,9	22,90	35,50	5,000						kg						
			10,000			9,440	7,130	5,750							
31	24,80	30,00	5,000						kg						
			10,000			7,900									
25,1	24,00	24,00	5,000						kg						
			10,000												
19,3	18,00	18,00	5,000						kg						
			10,000												
m															

Luffer Mode

															m
	10,000	5000	12	14	16	18	24	30	35,5	41,5	44,5	47,5	50,5	kg	
51,6	23,70	35,60	5,000						4,900	3,550	3,000	2,450	2,000	kg	
			10,000			9,780	6,770	4,760	3,400	2,860	2,300	1,850			
48,7	23,80	35,90	5,000						3,620	3,080	2,550	kg			
			10,000			4,990	3,470	2,930	2,400						
45,7	24,40	36,10	5,000						3,730	3,100	kg				
			10,000			7,180	4,980	3,580	2,950						
42,8	25,20	37,40	5,000						3,950	kg					
			10,000			7,470	5,390	380							
36,9	25,40	35,70	5,000						kg						
			10,000			8,200	5,940								
31	25,50	29,80	5,000						kg						
			10,000			7,600									
25,1	23,90	23,90	5,000						kg						
			10,000												
19,3	18,00	18,00	5,000						kg						
			10,000												
m															








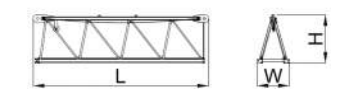

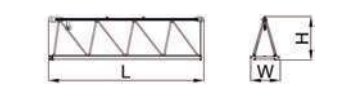
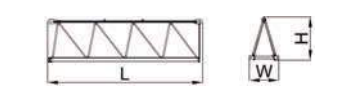

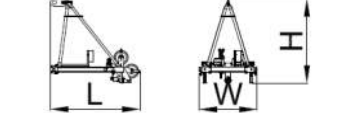
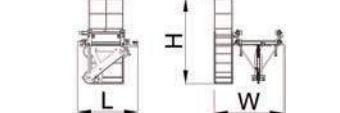
Flat Top Mode

Diagram	Hook		Span (m)												
	10,000	5000	12	14	16	18	24	30	35,5	41,5	44,5	47,5	50,5	m	
51,6	17,60	30,60	5,000						4,120	3,340	3,030	2,760	2,530	kg	
			10,000			9,720	6,680	4,970	3,950	3,170	2,860	2,600	2,370		
48,7	19,10	33,40	5,000						4,630	3,770	3,430	3,140	kg		
			10,000			7,460	5,580	4,460	3,600	3,260	2,970				
45,7	20,30	35,60	5,000						4,100	3,740	kg				
			10,000			8,070	6,060	4,860	3,940	3,580					
42,8	22,30	39,40	5,000						4,680	kg					
			10,000			9,120	6,870	5,540	4,510						
36,9	24,50	35,50	5,000						7,750	6,270	kg				
			10,000			8,140									
31	25,40	30,00	5,000						kg						
			10,000												
25,1	24,00	24,00	5,000						kg						
			10,000												
19,3	18,00	18,00	5,000						kg						
			10,000												

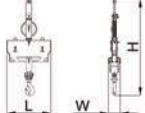
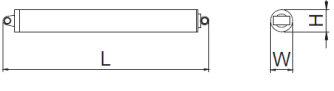
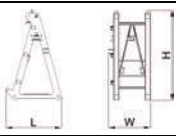
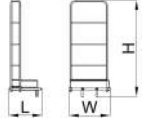
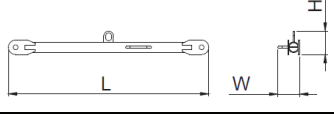
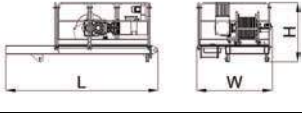
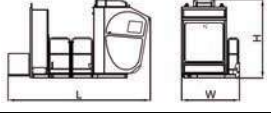
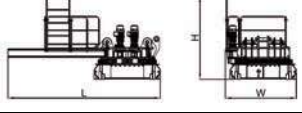
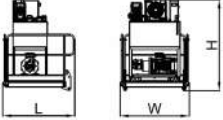
Luffer Mode

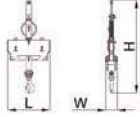
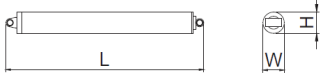
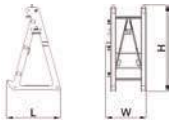
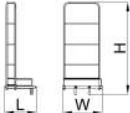
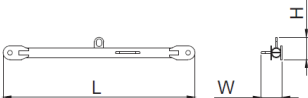

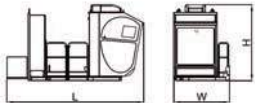
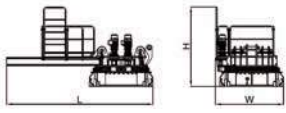
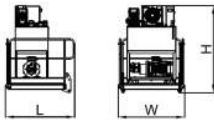
Diagram	Hook		Span (m)												
	10,000	5000	12	14	16	18	24	30	35,5	41,5	44,5	47,5	50,5	m	
51,6	24,50	36,90	5,000						3,790	3,230	2,660	2,200	kg		
			10,000			7,090	5,020	3,630	3,070	2,500	2,040				
48,7	24,50	37,40	5,000						3,910	3,360	2,810	kg			
			10,000			7,470	5,310	3,750	3,190	2,640					
45,7	25,00	37,80	5,000						4,070	3,410	kg				
			10,000			7,630	5,350	3,900	3,250						
42,8	25,70	39,10	5,000						4,350	kg					
			10,000			8,010	5,840	4,180							
36,9	26,30	35,70	5,000						8,200	5,940	kg				
			10,000			7,830									
31	25,70	29,80	5,000						kg						
			10,000												
25,1	23,90	23,90	5,000						kg						
			10,000												
19,3	18,00	18,00	5,000						kg						
			10,000												






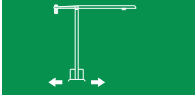


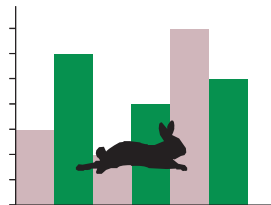
Q.ty Q.tà	Descripon Descizione	Sketch Figura	Length Lunghezza [L]	Width Larghezza [W]	Height Altezza [H]	Single Weight Peso Unitario
Jib/Braccio			[m]	[m]	[m]	[t]
1	Jib secon Elemento Braccio 1		11,71	1,30	1,90	4,95
1	Jib secon Elemento Braccio 2		6,17	1,15	1,76	1,27
1	Jib secon Elemento Braccio 3		6,19	1,15	1,73	1,00
1	Jib secon Elemento Braccio 4		6,20	1,15	1,74	0,83
1	Jib secon Elemento Braccio 5		6,20	1,15	1,73	0,66
1	Jib secon Elemento Braccio 6		6,11	1,15	1,70	0,52
1	Jib secon Elemento Braccio 7		6,10	1,15	1,70	0,46
1	Jib secon Elemento Braccio 8		3,14	1,15	1,97	0,27
1	Jib secon Elemento Braccio 9		1,99	1,29	1,89	0,31
1	Trolley Carrello		1,78	1,31	2,54	0,49



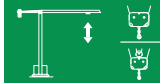


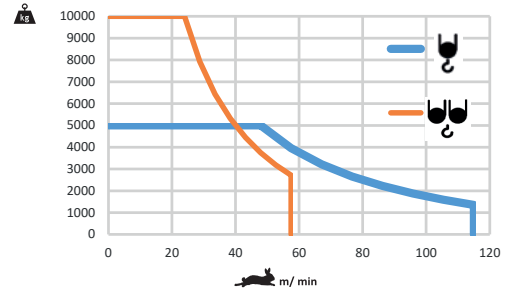
Q.ty Q.tà	Description Descrizione	Sketch Figura	Length Lunghezza [L]	Width Larghezza [W]	Height Altezza [H]	Single Weight Peso Unitario
Jib/Braccio			[m]	[m]	[m]	[t]
1	Hookblock Bozzello		1,10	0,35	2,79	0,89
1	Luffing cylinder Cilindro idraulico		3,80	0,41	0,41	2,00
A-frame / Cuspide			[m]	[m]	[m]	[t]
1	A-frame triangle Cuspide		1,77	1,26	2,86	0,94
1	Balcony Ballatoio		0,86	0,63	2,00	0,05
2	Tie-rods Tiranzi		3,30	0,12	0,22	0,07
1	Counterjib Controfreccia		3,96	2,13	1,53	2,24
Slewing-group / Gruppo Girevole			[m]	[m]	[m]	[t]
1	Access Balcony, Cabin Ballatoio e Cabina		4,46	1,81	2,47	1,20
1	Slewing-group Gruppo Girevole		5,28	2,40	2,06	6,70
1	Power pack		1,70	1,63	2,13	1,00


Q.ty Q.tà	Description Descrizione	Sketch Figura	Length Lunghezza [L]	Width Larghezza [W]	Height Altezza [H]	Single Weight Peso Unitario
Jib/Braccio			[m]	[m]	[m]	[t]
1	Hookblock Bozzello		1,10	0,35	2,79	0,89
1	Luffing cylinder Cilindro idraulico		3,80	0,41	0,41	2,00
A-frame / Cuspide			[m]	[m]	[m]	[t]
1	A-frame triangle Cuspide		1,77	1,26	2,86	0,94
1	Balcony Ballatoio		0,86	0,63	2,00	0,05
2	Tie-rods Tiranzi		3,30	0,12	0,22	0,07
1	Counterjib Controfreccia		3,96	2,13	1,53	2,24
Slewing-group / Gruppo Girevole			[m]	[m]	[m]	[t]
1	Access Balcony, Cabin Ballatoio e Cabina		4,46	1,81	2,47	1,20
1	Slewing-group Gruppo Girevole		5,28	2,40	2,06	6,70
1	Power pack		1,70	1,63	2,13	1,00

		
	0 a 0,65 r.p.m.	2x4 kW
	2 m/min	18,5 kW
	0 a 80 m/min	4 kW
	On Request	

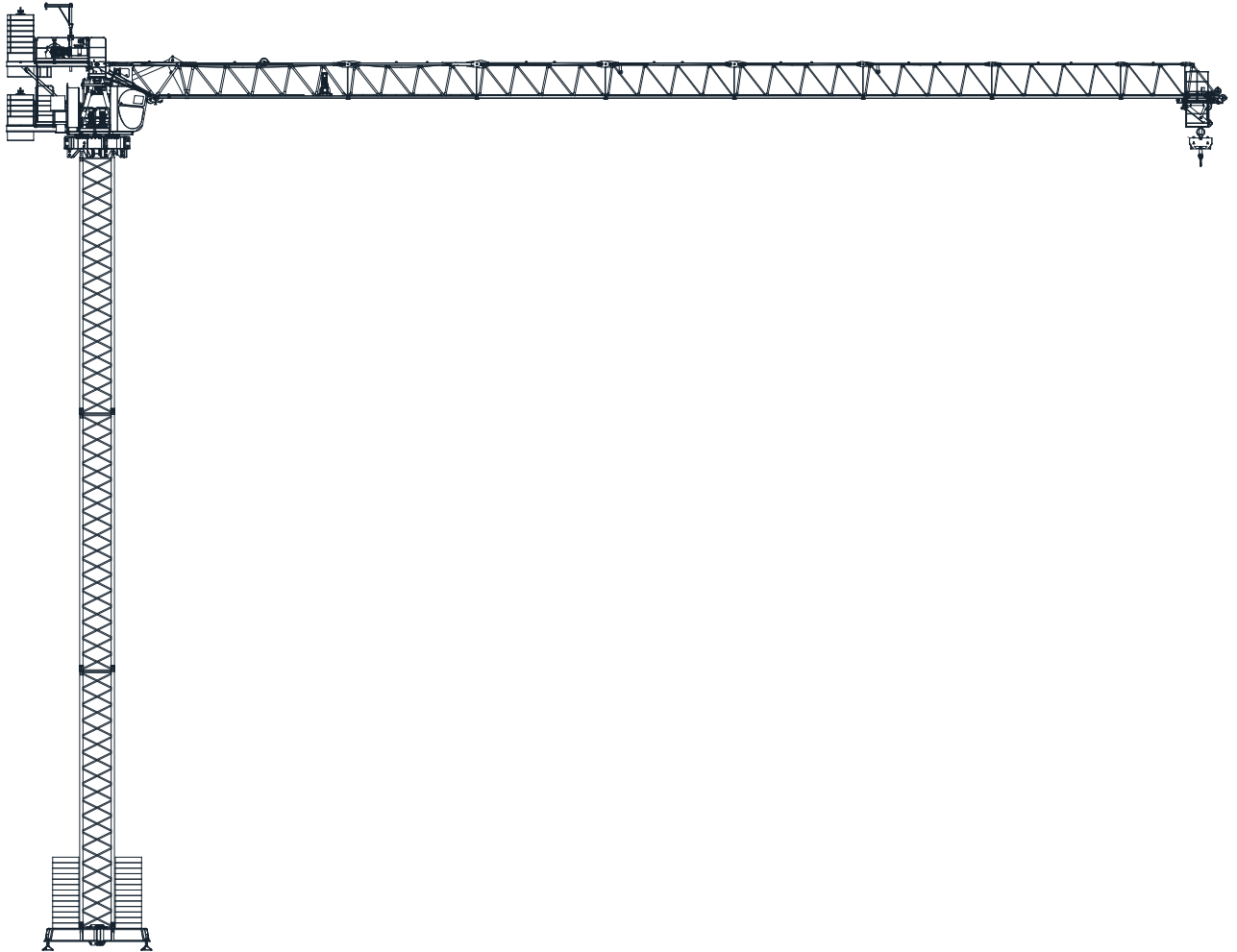


		
	0 a 115 m/min	37 kW
	0 a 57,5 m/min	



	79 kVA
	400/480V +-5% (50/60 Hz)

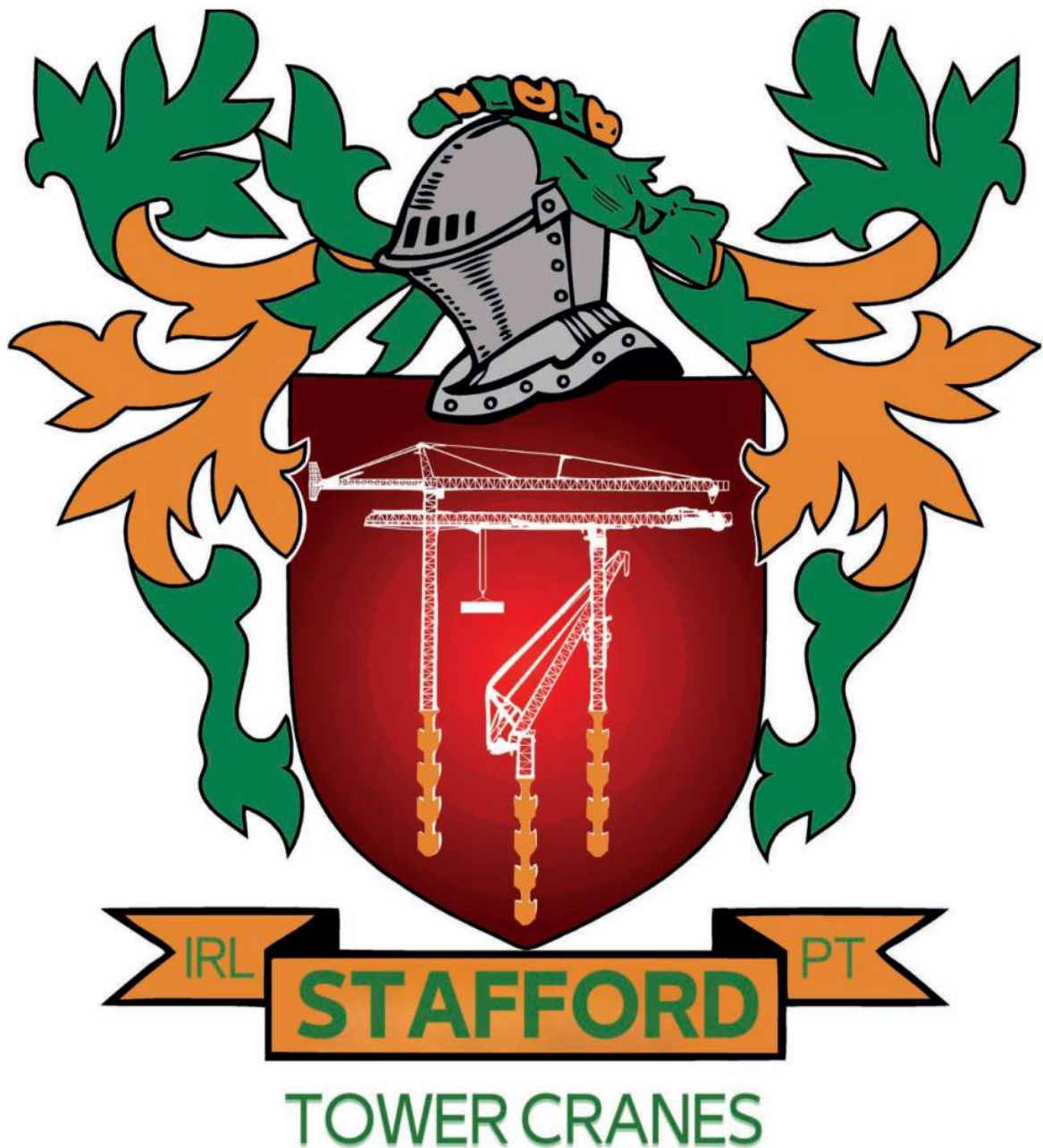




40' High Cube




STLH 150



Headquarters

 3620 S. 40th Street , Phoenix , AZ, 85040 USA

 +1 (480) 993 3302

Factory

 Zona Industrial de Canas de Senhorim - EN 234, 3525-040 Canas de Senhorim - Portugal

 +351 232 673 530  sales@staffordtowercranes.com

 staffordtowercranes.com