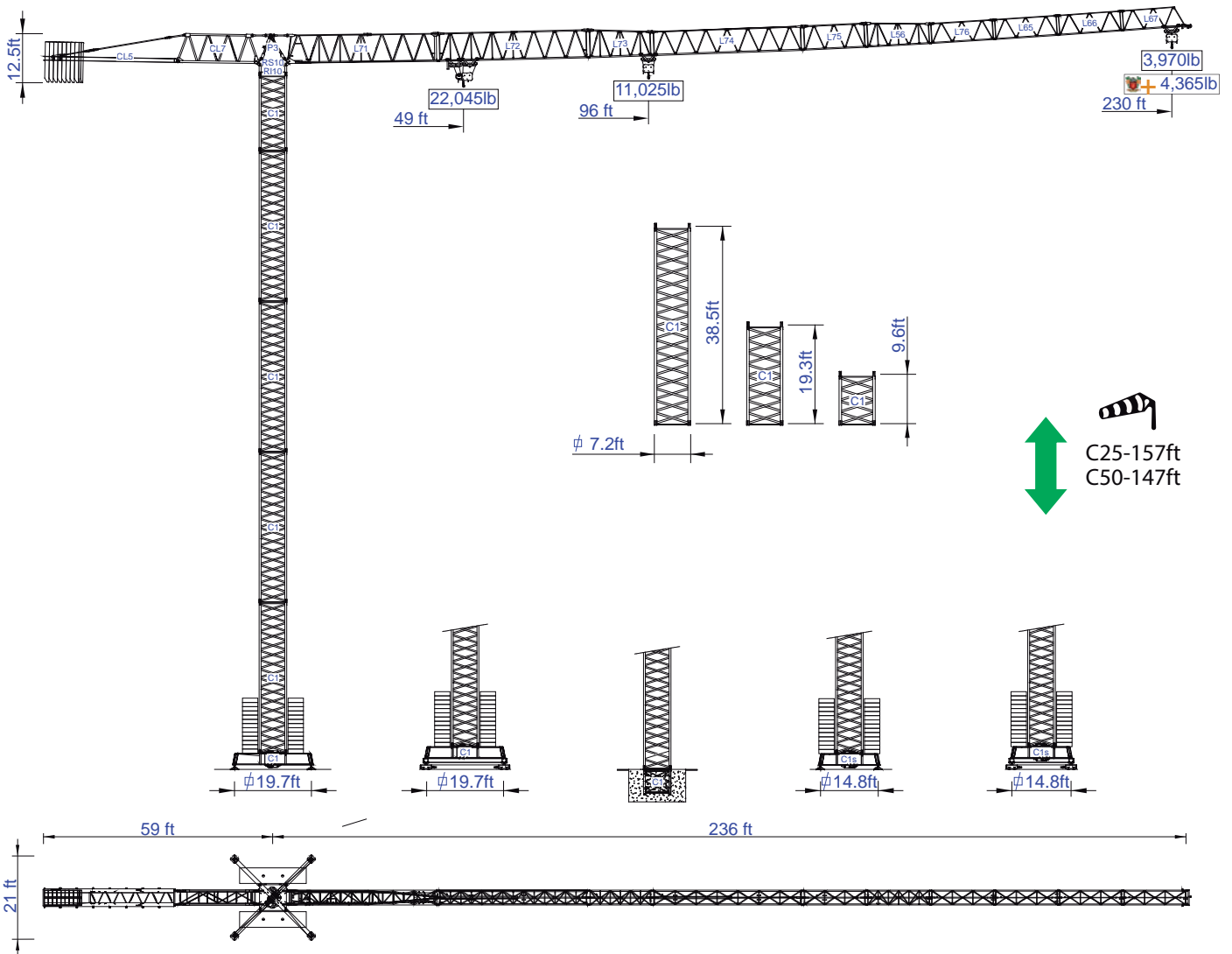




STF 7018

Data Sheet
Imperial



Headquarters

3620 S. 40th Street, Phoenix, AZ, 85040 USA
+1 (480) 993 3302

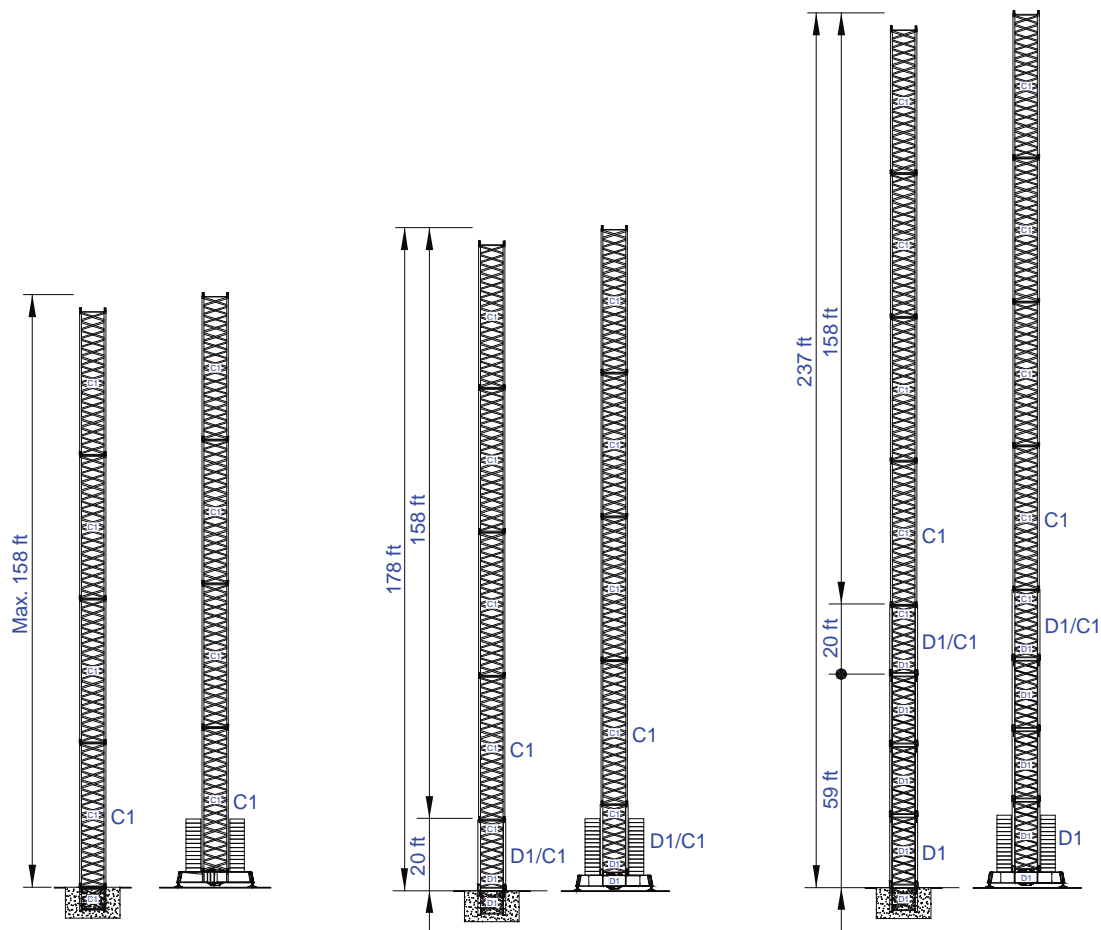
Factory

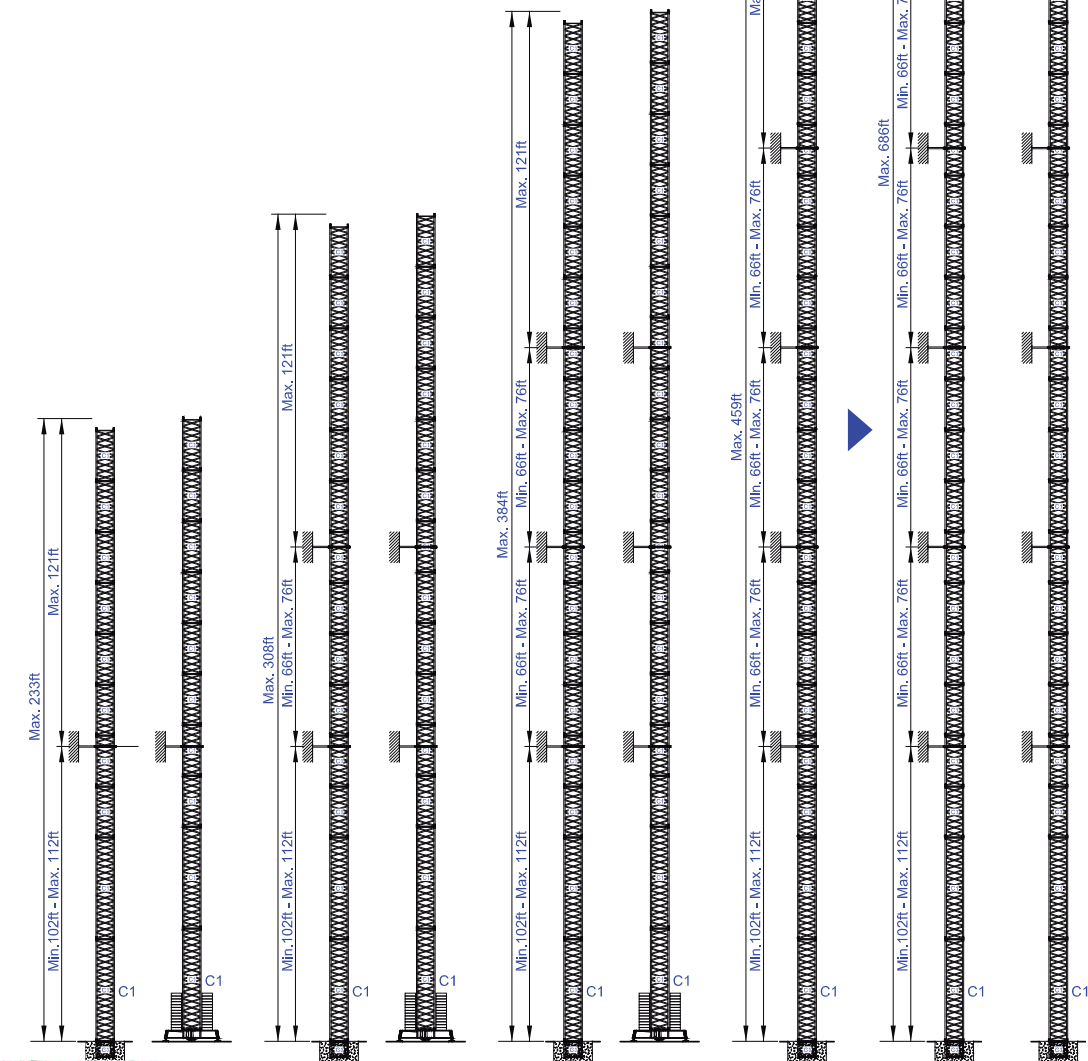
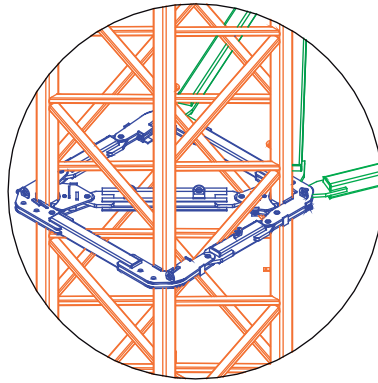
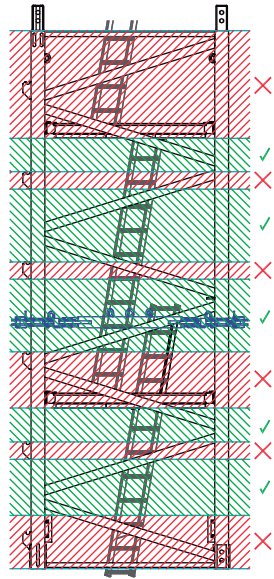
Zona Industrial de Canas de Senhorim - EN 234, 3525-040 Canas de Senhorim - Portugal
+351 232 673 530 sales@staffordtowercranes.com

www.staffordtowercranes.com



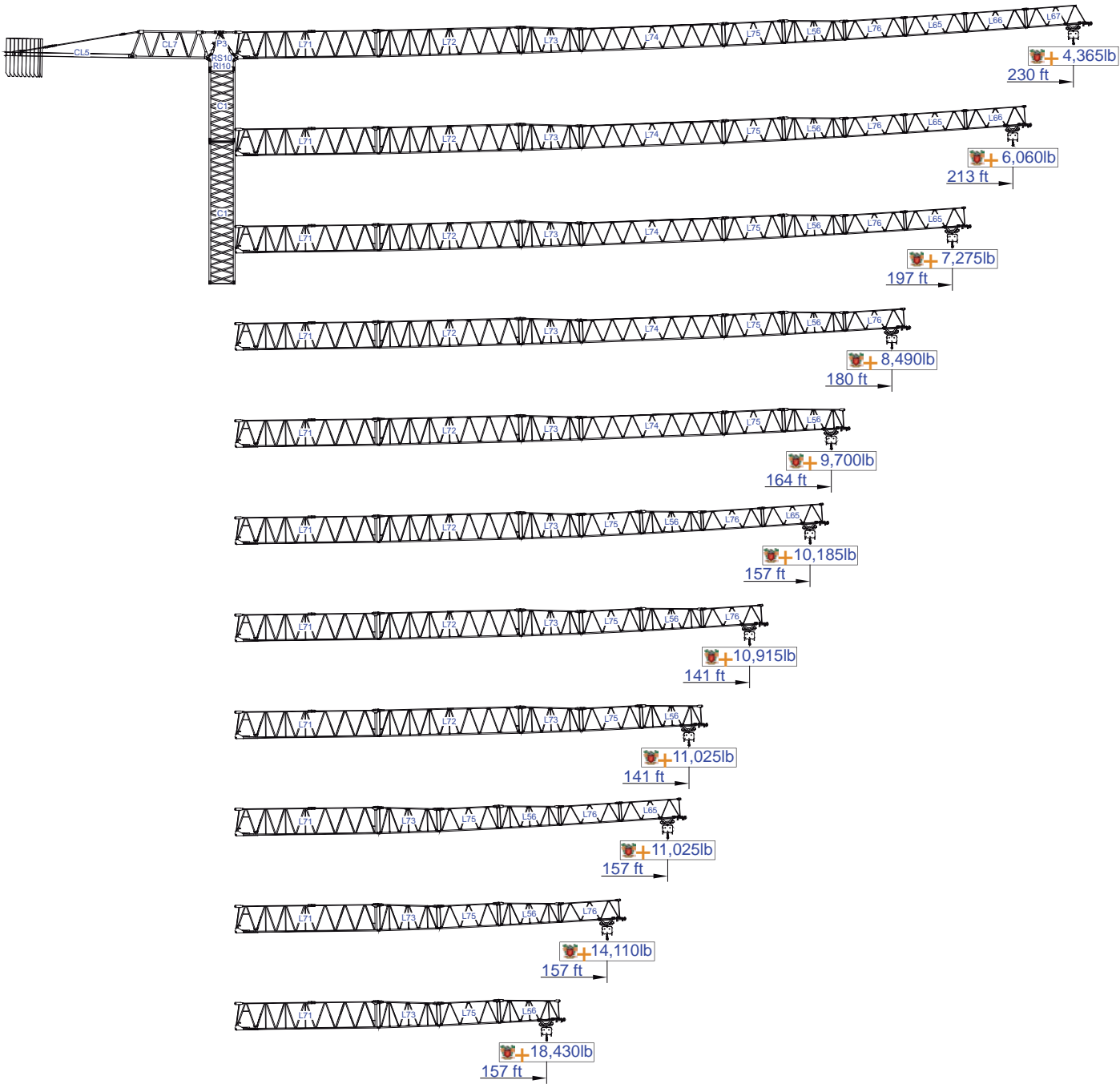
Empresa certificada no âmbito da Conceção, Fabrico e Serviço Pós-venda de Gruas Soima e componentes





More options




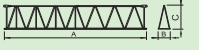
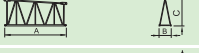

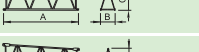
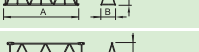
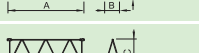
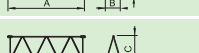
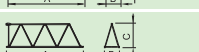

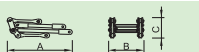

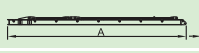


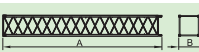
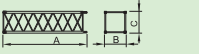
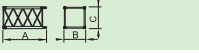

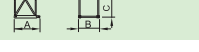
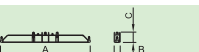
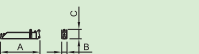





SACS 10%

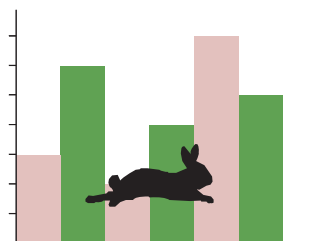


Model	Configuration	Load Capacity		Span (ft)															
		22,050lb	11,020lb	52	69	85	102	118	125	141	157	164	180	197	213	230	lb		
230	39,690lb 8x4,410lb + 2x2,205lb	48.6	96.1	11,020	11,020	11,020	11,020	8,220	9,090	7,910	6,960	6,620	5,920	5,310	4,830	4,370	lb		
				22,050	16,470	12,880	10,450	8,710	8,120	6,940	5,990	5,650	4,950	4,340	3,860	3,400			
213	39,690lb 8x4,410lb + 2x2,205lb	58.7	116.5	11,020	11,020	11,020	11,020	11,020	11,020	9,820	8,680	8,270	7,420	6,690	6,060				
				22,050	20,420	16,080	13,120	11,030	10,310	0,850	5,290	7,300	6,450	5,720	5,090				
197	37,485lb 8x4,410lb + 1x2,205lb	63.3	92.5	11,020	11,020	11,020	11,020	11,020	11,020	10,670	9,430	9,020	8,080	7,280					
				22,050	22,050	17,480	14,310	12,030	11,280	9,700	8,460	8,050	7,110	63,050					
180	37,485lb 8x4,410lb + 1x2,205lb	66.3	131.2	11,020	11,020	11,020	11,020	11,020	11,020	11,020	9,940	9,510	8,490						
				22,050	22,050	18,430	15,110	12,710	11,910	10,280	8,970	8,540	7,520						
164	35,280lb 7x4,410lb + 2x2,205lb	67.7	134.2	11,020	11,020	11,020	11,020	11,020	11,020	11,020	10,190	9,700							
				22,050	22,050	18,890	15,500	13,050	12,250	10,570	9,220	8,730							
157	30,870lb 6x4,410lb + 2x2,205lb	67.9	134.5	11,020	11,020	11,020	11,020	11,020	11,020	11,020	10,190								
				22,050	22,050	19,060	15,640	13,170	12,370	10,670	9,220								
141	26,460lb 5x4,410lb + 2x2,205lb	64.6	128.0	11,020	11,020	11,020	11,020	11,020	11,020	10,910									
				22,050	22,050	18,090	14,820	12,460	11,690	9,940									
125	24,255lb 5x4,410lb + 1x2,205lb	63.0	124.7	11,020	11,020	11,020	11,020	11,020	11,020										
				22,050	22,050	17,560	14,380	12,080	11,160										
118	19,840lb 4x4,410lb + 1x2,205lb	59.7	122.4	11,020	11,020	11,020	11,020	11,020											
				22,050	22,000	17,360	14,210	11,640											
102	17,640lb 3x4,410lb + 2x2,205lb	60.7	120.1	11,020	11,020	11,020	11,020												
				22,050	21,660	17,070	13,580												
85	15,435lb 3x4,410lb + 1x2,205lb	58.7	116.5	11,020	11,020	11,020													
				22,050	20,980	16,010													
		lb																	

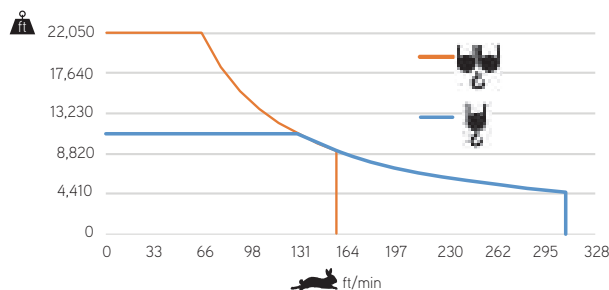


			A (ft)	B (ft)	C (ft)	lb	
Jib / Lança / Fleche / Braccio		L71	39.30	6.20	9.50	12,080	
/ Ausleger / кливер		L72	39.30	3.80	7.40	4,560	
		L73	17.20	3.80	7.40	1,810	
		L74	39.20	3.80	6.40	2,990	
		L75	17.10	3.80	6.40	1,260	
		L56	17.10	3.80	6.30	1,280	
		L76	17.00	3.80	5.30	1000	
		L65	16.80	3.80	5.30	800	
		L66	16.80	3.80	5.30	630	
		L67	16.80	3.80	5.30	580	
	Head turntable / Cabeçote / Pivot / Testa giradischi / Kopfplattenspieler		RS10 RI10	8.60	7.20	7.10	17,640
			P3	8.00	4.30	2.50	2,800
		CL7	21.20	4.10	7.50	5,730	
Counter-jib / Contra lança / Contre-flèche		CL5	34.60	4.90	1.60	7,830	
Counterweight / Contrapeso / Contrepoids / Gegengewicht / Противовес		CP2	3.80	1.10	10.30	8x4,410 35,270	
		CP3	3.80	0.50	10.30	2x2,205 4,410	
Tower section / torre / Coupe tour / Sezione torre / Turmabschnitt / Секция башни		C1	39.40	7.20	7.20	9,260	
		C1	20.10	7.20	7.20	4,850	
		C1	10.50	7.20	7.20	2,650	
Climbing tower section		C1	10.50	7.40	7.40	3,000	
Foundation anchor / Tramo encastrar /		C1	7.50	7.10	7.10	1,870	
Base Chassis		C1	26.70	2.60	4.50	10,140	
			13.80	1.20	4.50	2x3,750 7,500	
TOTAL						17,640	
Base Chassis		C1s	21.70	2.60	4.50	7,540	
			10.40	1.20	4.50	2x4,060 8,110	
TOTAL						15,650	

	0 a 1 r.p.m.	3x36 ft/lbf
	0 a 196ft/min	5,5 kW
	0 a 32ft/min	2x4 kW

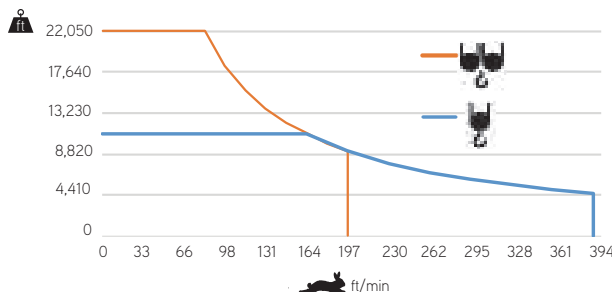


	0 a 308 ft/min	37 kW
	0 a 154 ft/min	



	55 kVA
	400 V +- 5% (50/60 Hz)

	0 a 387 ft/min	45 kW
	0 a 194 ft/min	



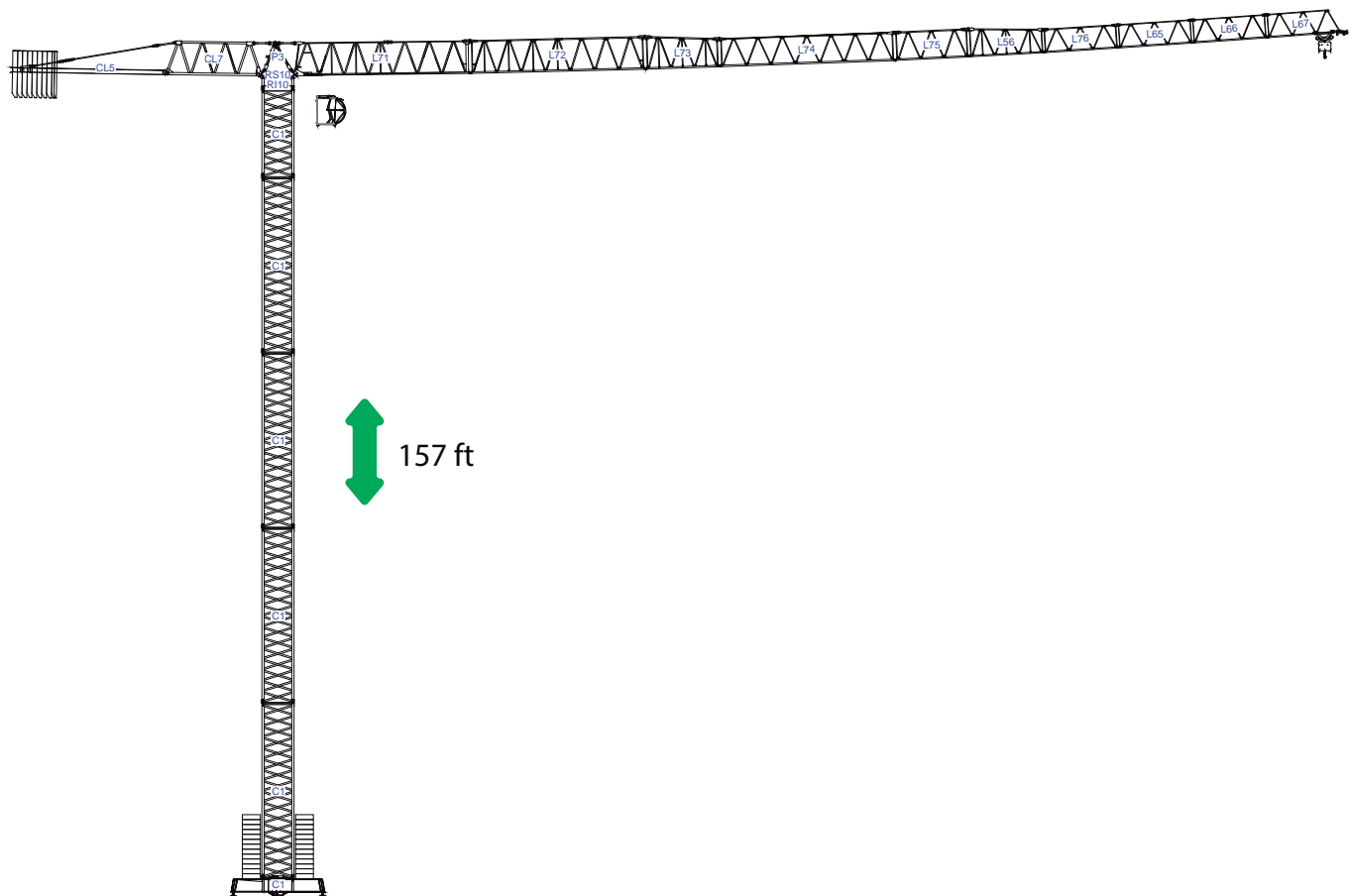
	65 kVA
	400 V +- 5% (50/60 Hz)

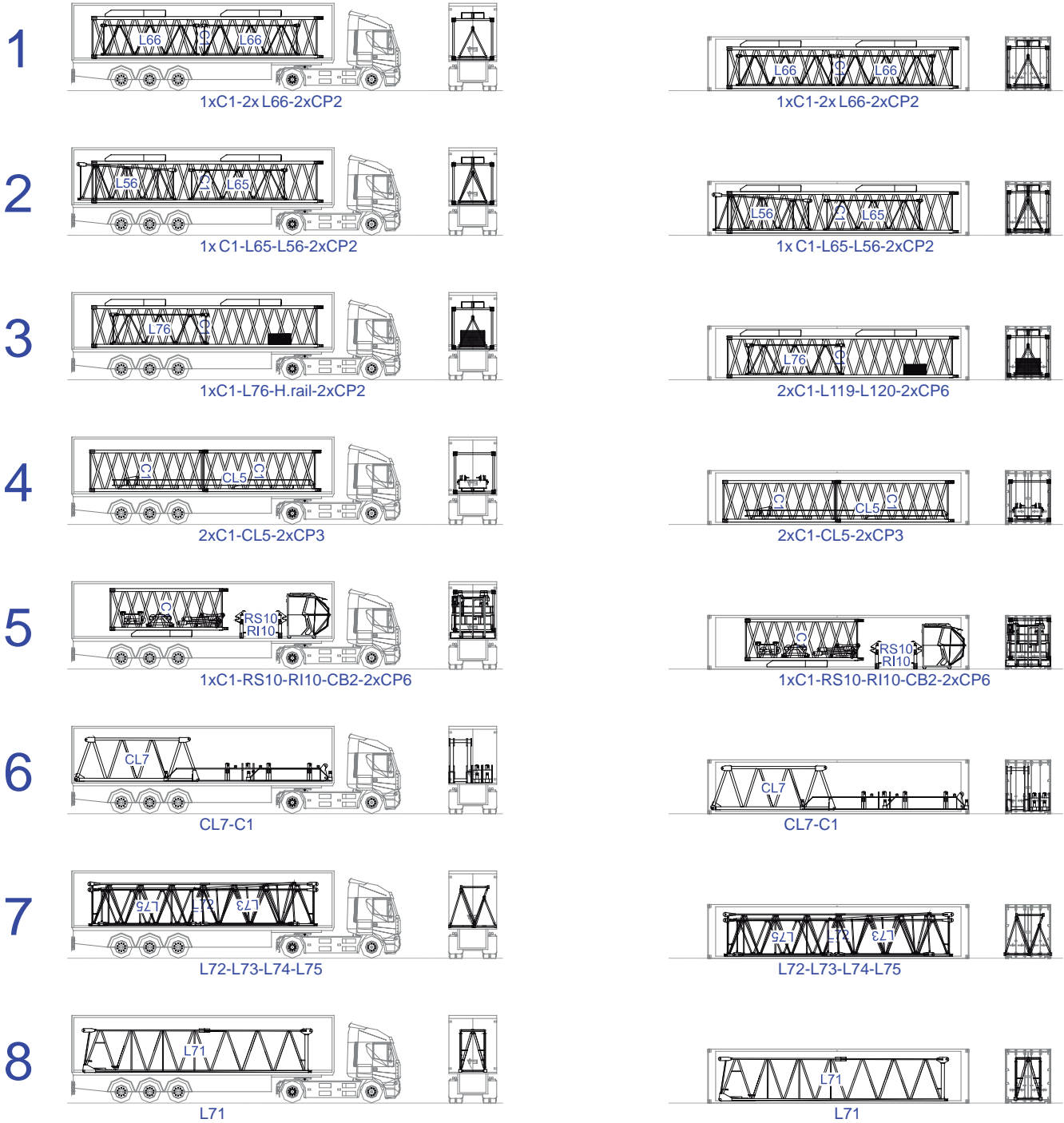
Max height of hoist

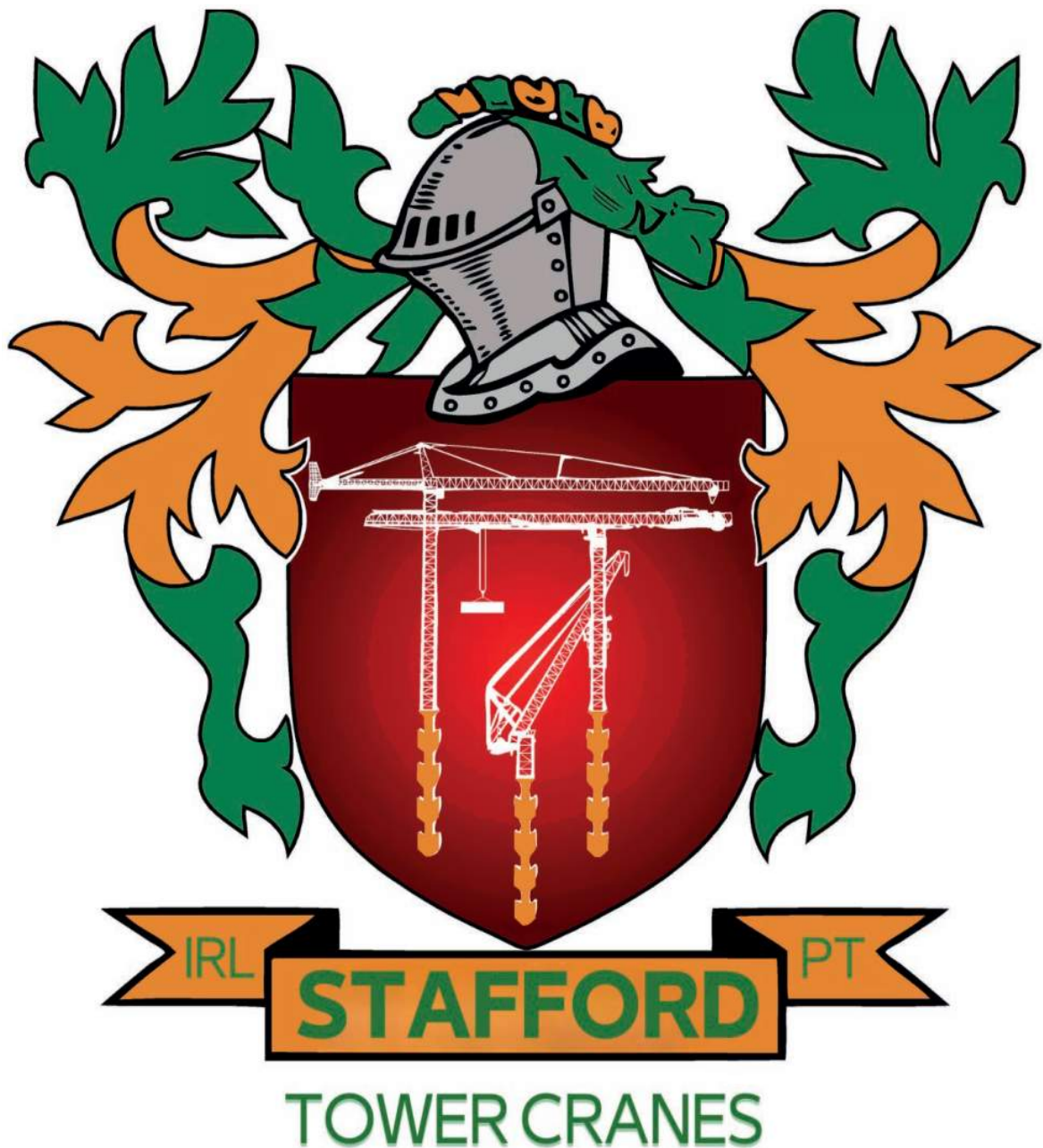
(H)Max. 217ft
 (H)Max. 433ft

 + More options










Headquarters

 3620 S. 40th Street , Phoenix , AZ, 85040 USA

 +1 (480) 993 3302

Factory

 Zona Industrial de Canas de Senhorim - EN 234, 3525-040 Canas de Senhorim - Portugal

 +351 232 673 530  sales@staffordtowercranes.com

 staffordtowercranes.com