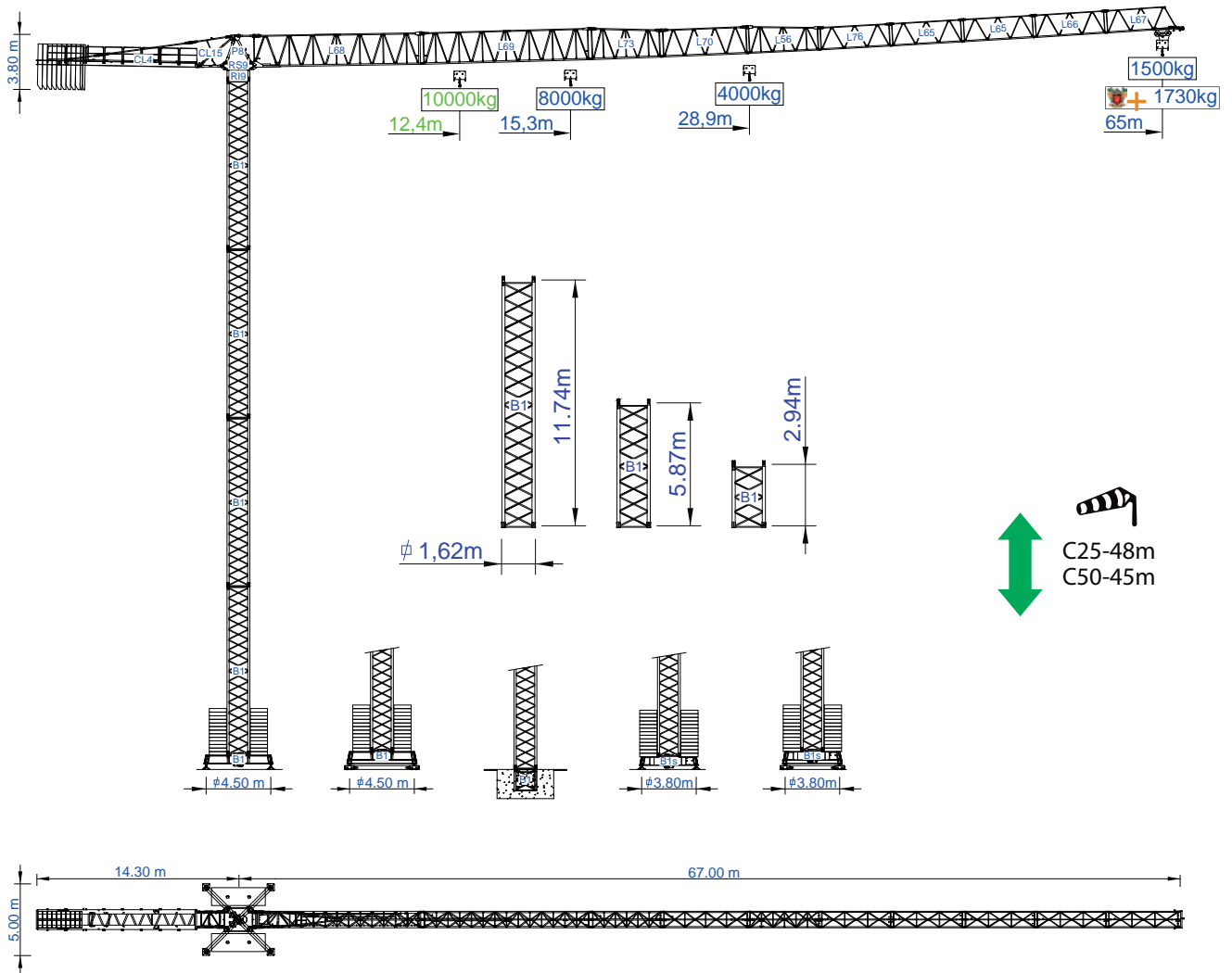




STF 6515

Data Sheet / Catalogo / Fiche Technique / Scheda Dati
 Datenblatt / техническая спецификация
 Metric / Métrico / Métrique / Metrico / Metrisch / метрика



Headquarters

3620 S. 40th Street, Phoenix, AZ, 85040 USA
 +1 (480) 993 3302

Factory

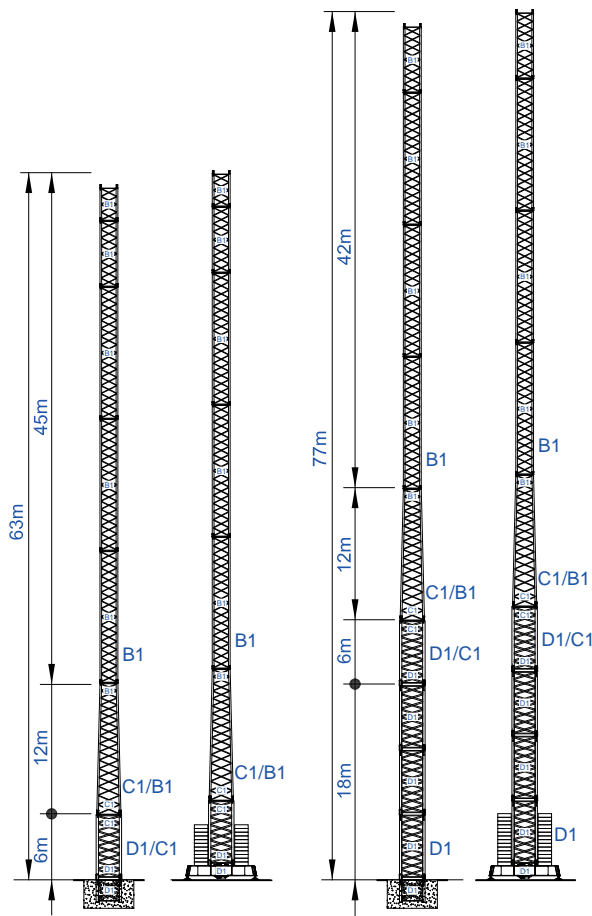
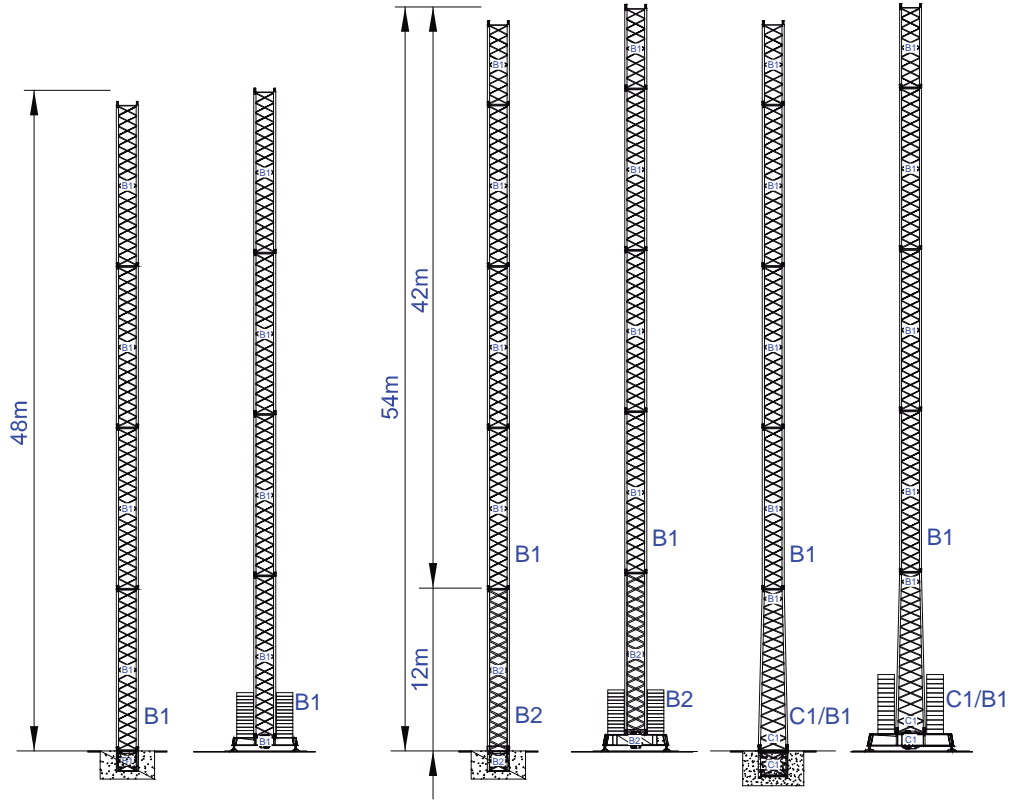
Zona Industrial de Canas de Senhorim - EN 234, 3525-040 Canas de Senhorim - Portugal
 +351 232 673 530 sales@staffordtowercranes.com

v.1.003-02/25

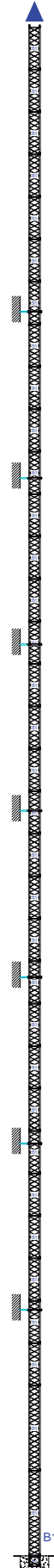
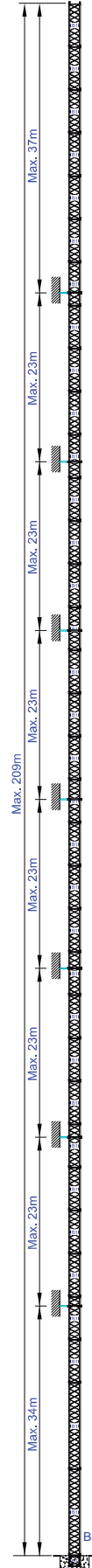
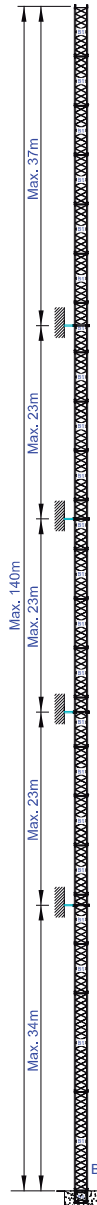
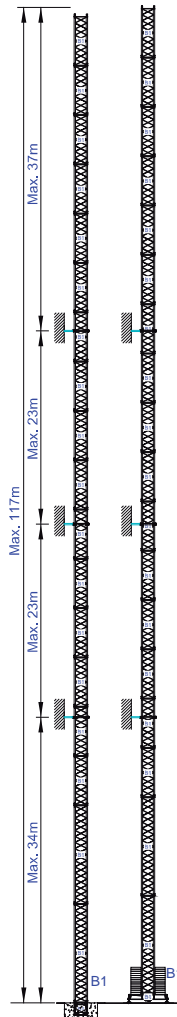
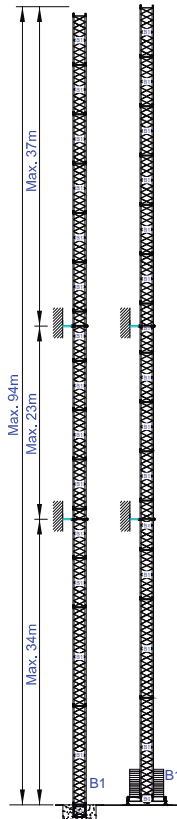
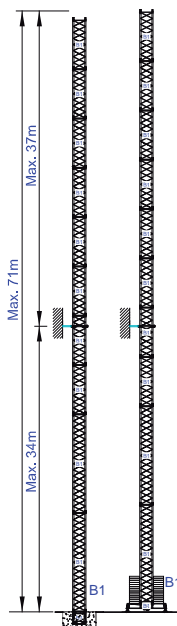
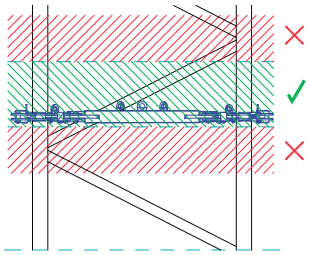
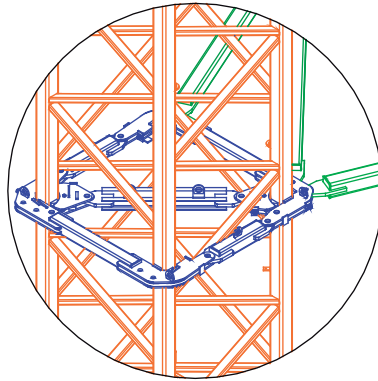
www.staffordtowercranes.com

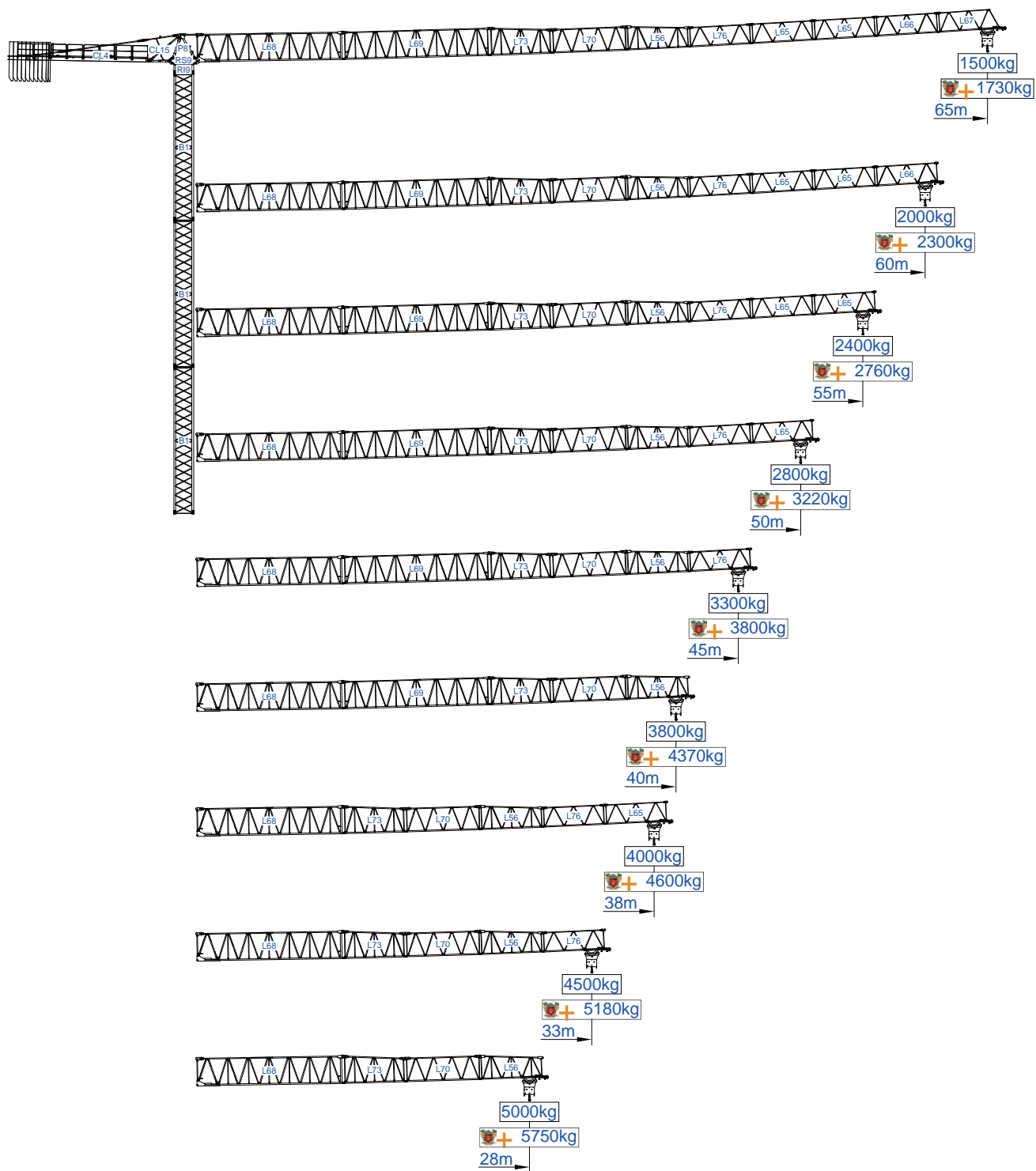


Empresa certificada no âmbito da Conceção, Fabrico e Serviço Pós-venda de Gruas Soima e componentes



More options





8 000 kg

m	Diagram	8000 kg		4000 kg													m
		8000 kg	4000 kg	15	18	23	28	33	38	40	45	50	55	60	65		
65	19000kg 9x2000kg + 1x1000kg	15.3	28.9	4000	4000	4000	4000	3440	2920	2750	2390	2100	1860	1670	1500	kg	
				8000	6720	5150	4140	3440	2920	2750	2390	2100	1860	1670	1500		
60	18000kg 9x2000kg	17.6	33.3	4000	4000	4000	4000	4000	3450	3250	2830	2500	2230	2000			
				8000	7830	6020	4860	4050	3450	3250	2830	2500	2230	2000			
55	18000kg 9x2000kg	18.8	35.4	4000	4000	4000	4000	4000	3700	3490	3040	2690	2400				
				8000	8000	6430	5200	4330	3700	3490	3040	2690	2400				
50	17000kg 8x2000kg + 1x1000kg	19.4	36.7	4000	4000	4000	4000	4000	3840	3630	3170	2800					
				8000	8000	6670	5390	4500	3840	3630	3170	2800					
45	16000kg 8x2000kg	20.1	38.0	4000	4000	4000	4000	4000	4000	3780	3300						
				8000	8000	6930	5610	4680	4000	3780	3300						
40	15000kg 7x2000kg + 1x1000kg	20.2	38.2	4000	4000	4000	4000	4000	4000	3800							
				8000	8000	6980	5640	4710	4030	3800							
38	13000kg 6x2000kg + 1x1000kg	20.1	38.0	4000	4000	4000	4000	4000	4000								
				8000	8000	6930	5610	4680	4000								
33	11000kg 5x2000kg + 1x1000kg	19.4	36.7	4000	4000	4000	4000	4000									
				8000	8000	6670	5390	4500									
28	10000kg 5x2000kg	18.1	34.2	4000	4000	4000	4000										
				8000	8000	6200	5000										

SACS
15%



m	Diagram	8000 kg		4000 kg													m
		8000 kg	4000 kg	15	18	23	28	33	38	40	45	50	55	60	65		
65	19000kg 9x2000kg + 1x1000kg	15.3	28.9	4000	4000	4000	4000	3960	3360	3160	2750	2420	2140	1920	1730	kg	
				8000	7730	5930	4760	3960	3360	3160	2750	2420	2140	1920	1730		
60	18000kg 9x2000kg	17.6	33.3	4000	4000	4000	4000	4000	3960	3740	3260	2880	2560	2300			
				8000	8000	6930	5590	4650	3960	3740	3260	2880	2560	2300			
55	18000kg 9x2000kg	18.8	35.4	4000	4000	4000	4000	4000	4000	4000	3500	3090	2760				
				8000	8000	7400	5980	4980	4250	4010	3500	3090	2760				
50	17000kg 8x2000kg + 1x1000kg	19.4	36.7	4000	4000	4000	4000	4000	4000	4000	3640	3220					
				8000	8000	7680	6200	5180	4420	4170	3640	3220					
45	16000kg 8x2000kg	20.1	38.0	4000	4000	4000	4000	4000	4000	4000	3800						
				8000	8000	7980	6450	5380	4600	4340	3800						
40	15000kg 7x2000kg + 1x1000kg	20.2	38.2	4000	4000	4000	4000	4000	4000	4000							
				8000	8000	8000	6490	5420	4630	4370							
38	13000kg 6x2000kg + 1x1000kg	20.1	38.0	4000	4000	4000	4000	4000	4000								
				8000	8000	7980	6450	5380	4600								
33	11000kg 5x2000kg + 1x1000kg	19.4	36.7	4000	4000	4000	4000	4000									
				8000	8000	7680	6200	5180									
28	10000kg 5x2000kg	18.1	34.2	4000	4000	4000	4000										
				8000	8000	7130	5750										



10 000 kg

m	Diagram	10000 kg		5000 kg		15	18	23	28	33	38	40	45	50	55	60	65	m
		10000 kg	5000 kg	15	18	23	28	33	38	40	45	50	55	60	65	kg		
65	19000kg 9x2000kg + 1x1000kg	12.4	23.6	5000	5000	5000	4140	3440	2920	2750	2390	2100	1860	1670	1500			
				8170	6720	5150	4140	3440	2920	2750	2390	2100	1860	1670	1500			
60	18000kg 9x2000kg	14.3	27.3	5000	5000	5000	4860	4050	3450	3250	2830	2500	2230	2000				
				9500	7830	6020	4860	4050	3450	3250	2830	2500	2230	2000				
55	18000kg 9x2000kg	15.2	29.0	5000	5000	5000	5000	4330	3700	3490	3040	2690	2400					
				10000	8360	6430	5200	4330	3700	3490	3040	2690	2400					
50	17000kg 8x2000kg + 1x1000kg	15.7	30.0	5000	5000	5000	5000	4500	3840	3630	3170	2800						
				10000	8670	6670	5390	4500	3840	3630	3170	2800						
45	16000kg 8x2000kg	16.3	31.1	5000	5000	5000	5000	4680	4000	3780	3300							
				10000	9000	6930	5610	4680	4000	3780	3300							
40	15000kg 7x2000kg + 1x1000kg	16.4	31.3	5000	5000	5000	5000	4710	4030	3800								
				10000	9060	6980	5640	4710	4030	3800								
38	13000kg 6x2000kg + 1x1000kg	16.3	31.1	5000	5000	5000	5000	4680	4000									
				10000	9000	6930	5610	4680	4000									
33	11000kg 5x2000kg + 1x1000kg	15.7	30.0	5000	5000	5000	5000	4500										
				10000	8670	6670	5390	4500										
28	10000kg 5x2000kg	14.7	28.0	5000	5000	5000	5000											
				9770	8060	6200	5000											
		m																

SACS
15%



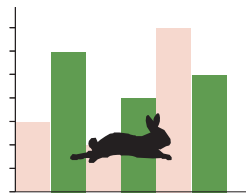
m	Diagram	10000 kg		5000 kg		15	18	23	28	33	38	40	45	50	55	60	65	m
		10000 kg	5000 kg	15	18	23	28	33	38	40	45	50	55	60	65	kg		
65	19000kg 9x2000kg + 1x1000kg	12.4	23.6	5000	5000	5000	4760	3960	3360	3160	2750	2420	2140	1920	1730			
				9390	7730	5930	4760	3960	3360	3160	2750	2420	2140	1920	1730			
60	18000kg 9x2000kg	14.3	27.3	5000	5000	5000	5000	4650	3960	3740	3260	2880	2560	2300				
				10000	9010	6930	5590	4650	3960	3740	3260	2880	2560	2300				
55	18000kg 9x2000kg	15.2	29.0	5000	5000	5000	5000	4980	4250	4010	3500	3090	2760					
				10000	9620	7400	5980	4980	4250	4010	3500	3090	2760					
50	17000kg 8x2000kg + 1x1000kg	15.7	30.0	5000	5000	5000	5000	5000	4420	4170	3640	3220						
				10000	9970	7680	6200	5180	4420	4170	3640	3220						
45	16000kg 8x2000kg	16.3	31.1	5000	5000	5000	5000	5000	4600	4340	3800							
				10000	10000	7980	6450	5380	4600	4340	3800							
40	15000kg 7x2000kg + 1x1000kg	16.4	31.3	5000	5000	5000	5000	5000	4630	4370								
				10000	10000	8030	6490	5420	4630	4370								
38	13000kg 6x2000kg + 1x1000kg	16.3	31.1	5000	5000	5000	5000	5000	4600									
				10000	10000	7980	6450	5380	4600									
33	11000kg 5x2000kg + 1x1000kg	15.7	30.0	5000	5000	5000	5000	5000										
				10000	9970	7680	6200	5180										
28	10000kg 5x2000kg	14.7	28.0	5000	5000	5000	5000											
				10000	9260	7130	5750											
		m																



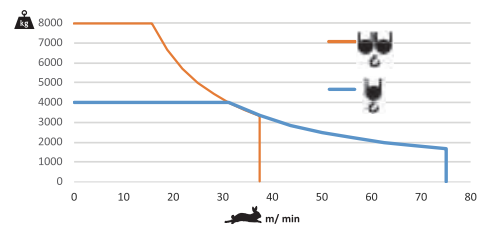
			A (mm)	B (mm)	C (mm)	kg	
Jib / Lança / Fleche / Braccio		L68	11970	1900	2300	5050	
/ Ausleger / кливер		L69	11960	1160	2260	1650	
		L73	5230	1160	2260	750	
		L70	6200	1160	1950	680	
		L56	5200	1160	1930	590	
		L76	5180	1160	1610	370	
		L65	5110	1160	1610	2x330 660	
		L66	5110	1160	1610	300	
		L67	5110	1160	1610	290	
Head turntable / Cabeçote / Pivot		RS9	2505	1700	1950	4650	
/ Testa giradischi / Kopfplattenspieler		RI9	2505	1700	1950	4650	
		P8	2230	1300	820	830	
Counter-jib / Contra lança / Contre-flèche		CL15	3405	1320	405	600	
/ Gegenausleger / Контр-стрела		CL4	11400	1500	500	3750	
Counterweight / Contrapeso / Contrepoids		CP2	1160	330	3140	9x2000 18000	
/ Gegengewicht / Противовес		CP3	1160	165	3140	1000	
Tower section / torre / Coupe tour / Sezione torre		B1	12000	1620	1620	3450	
/ Turmabschnitt / Секция башни		B1	6130	1620	1620	1800	
		B1	3195	1620	1620	1070	
Climbing tower section		B1	3195	1830	1830	1100	
Foundation anchor / Tramo encastrar /		B1	1775	1600	1600	650	
Base Chassis		B1	6620	500	1040	2190	
			3120	340	1040	2x980 1960	
						TOTAL	4150
Base Chassis		B1s	5620	500	1040	1800	
			2710	340	1040	2x900 1800	
						TOTAL	3600



	0 a 1 r.p.m.	2x6,5 daN.m
	0 a 60 m/min	5,5 kW
	0-10 m/min	2x4 kW

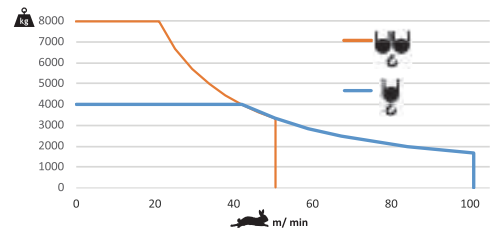


	0 a 75 m/min
	0 a 37,5 m/min
	22 kW



	48 kVA
	400 V +- 5% (50/60 Hz)

	0 a 94 m/min
	0 a 47 m/min
	30 kW

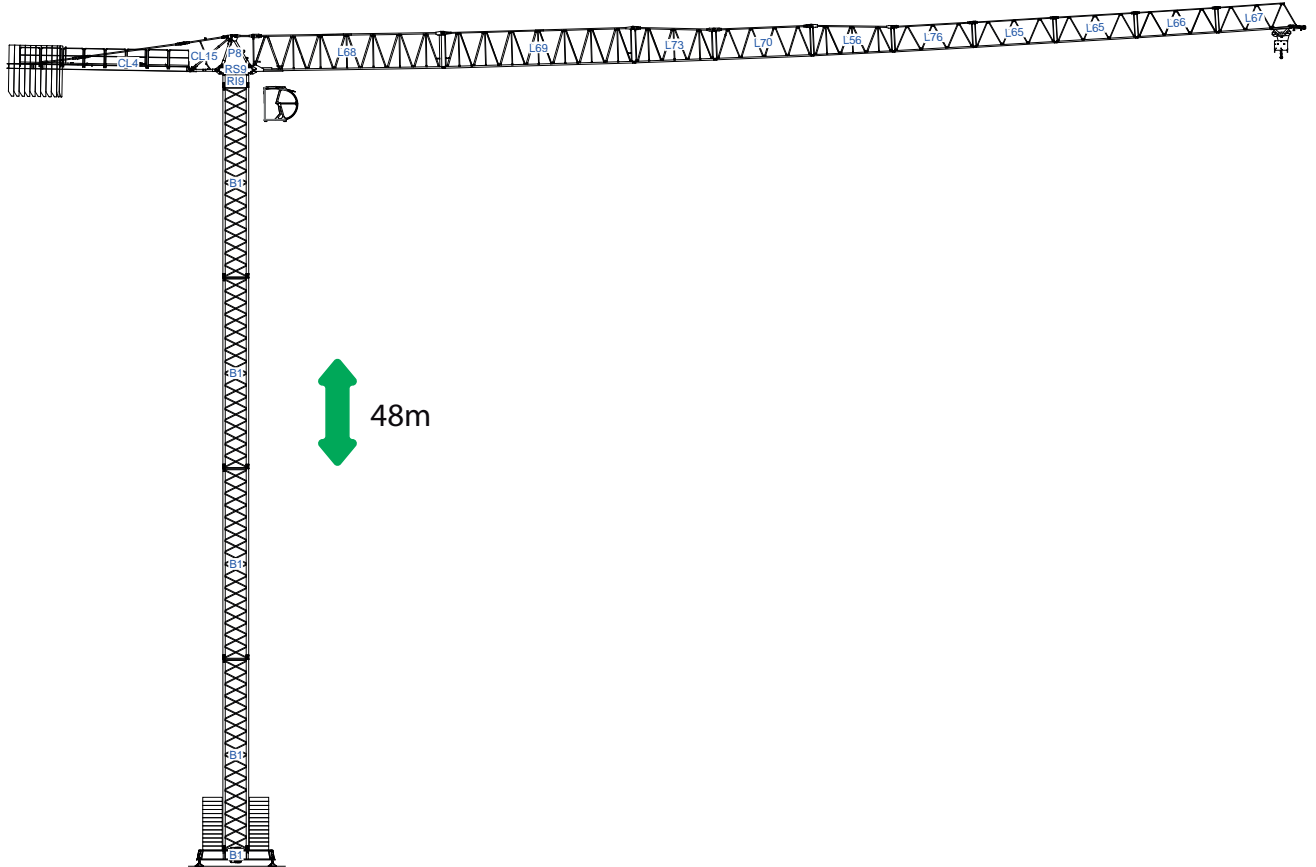


	58 kVA
	400 V +- 5% (50/60 Hz)

Max height of hoist

(H)Max. 54m
 (H)Max. 108m
 + More options





/

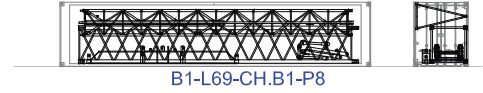
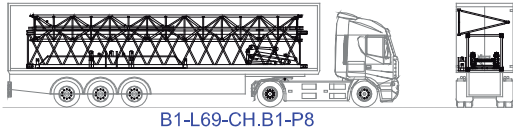
6x



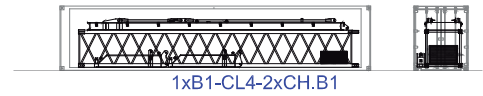
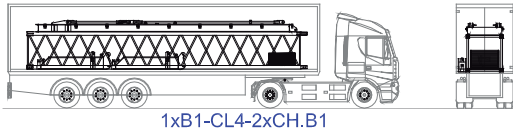
40' High Cube



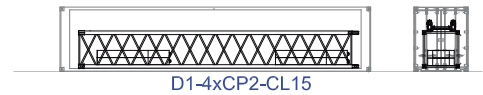
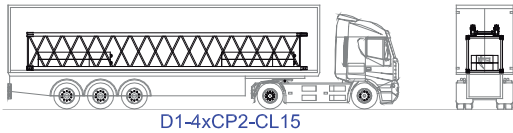
1



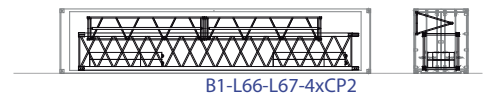
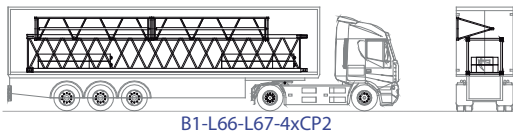
2



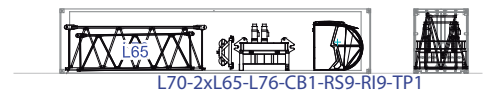
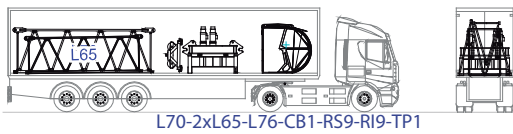
3



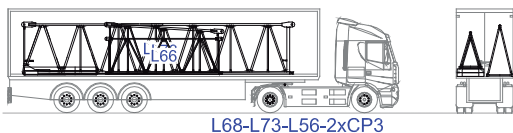
4

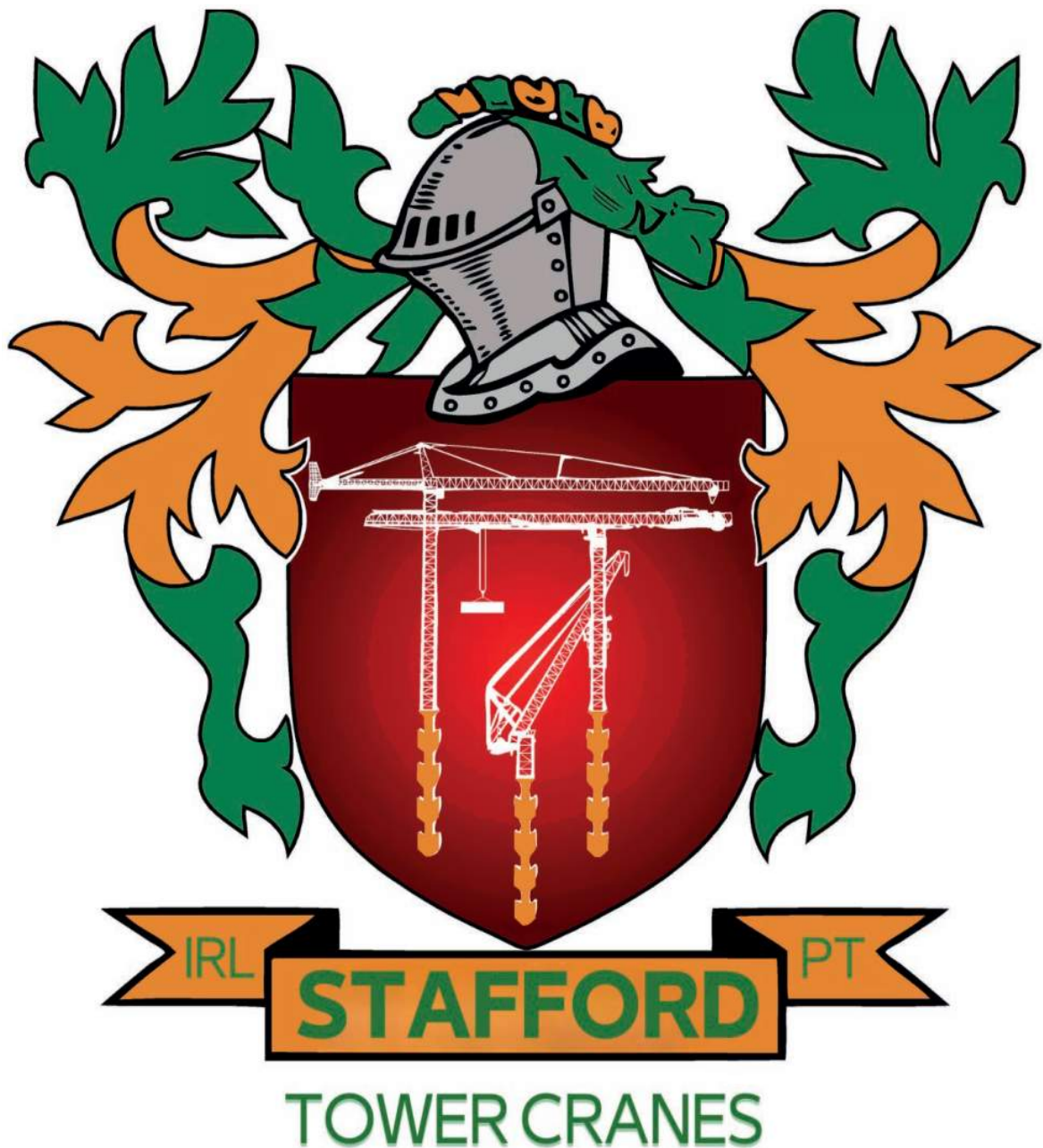


5



6





Headquarters

📍 3620 S. 40th Street , Phoenix , AZ, 85040 USA

📞 +1 (480) 993 3302

Factory

📍 Zona Industrial de Canas de Senhorim - EN 234, 3525-040 Canas de Senhorim - Portugal

📞 +351 232 673 530 ✉ sales@staffordtowercranes.com

🌐 www.staffordtowercranes.com