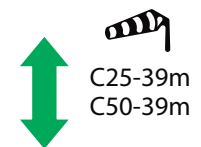
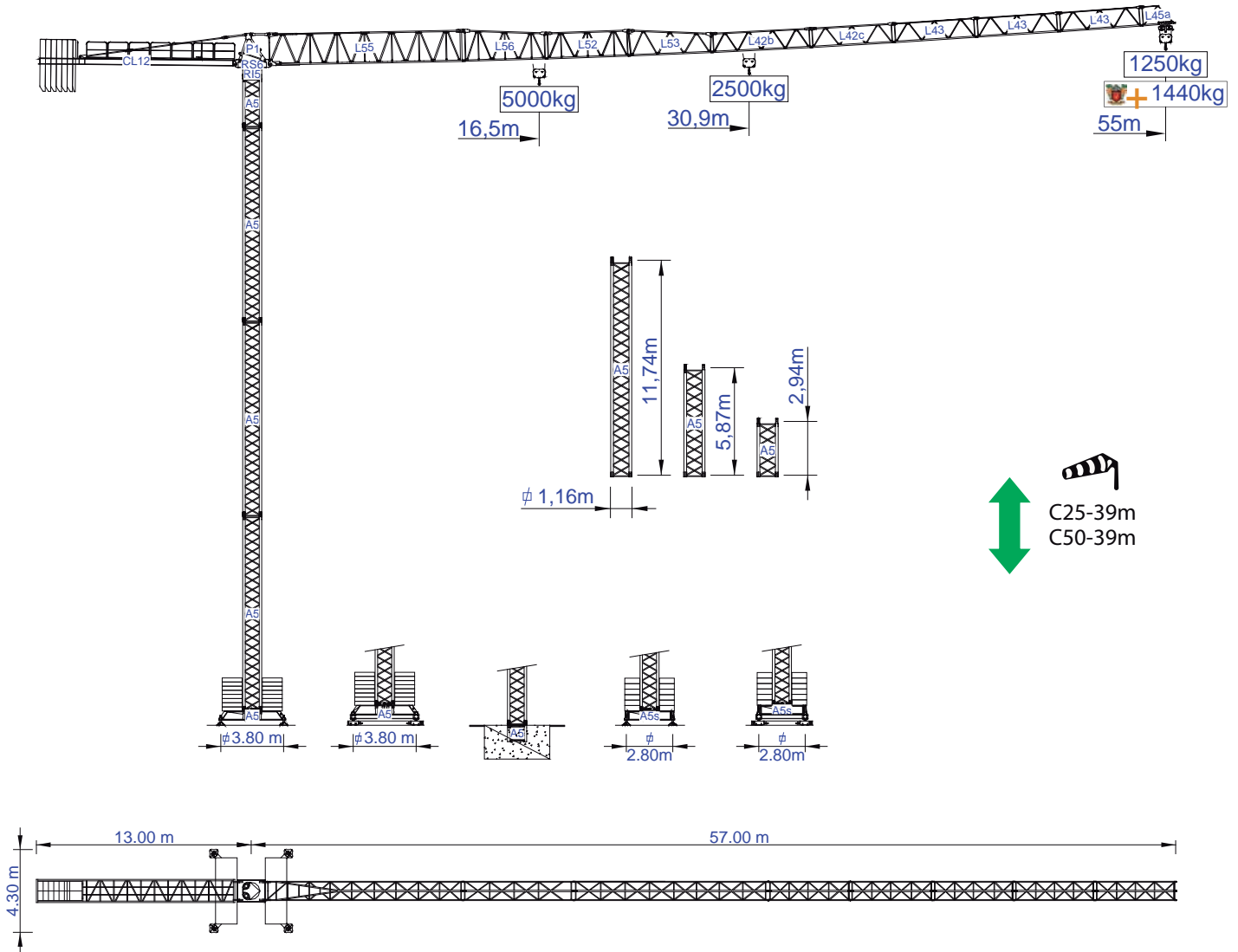




# STF 5512

Data Sheet / Catalogo / Fiche Technique / Scheda Dati  
 Datenblatt / техническая спецификация  
 Metric / Métrico / Métrique / Metrico / Metrisch / метрика



## Headquarters

3620 S. 40th Street, Phoenix, AZ, 85040 USA  
 +1 (480) 993 3302

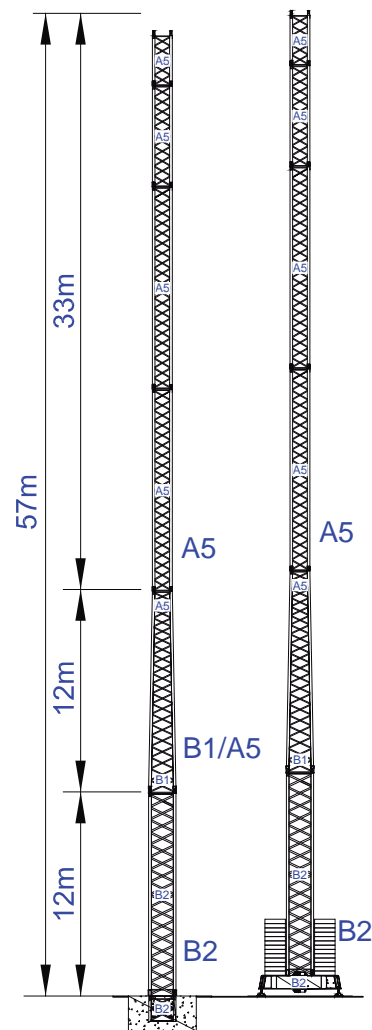
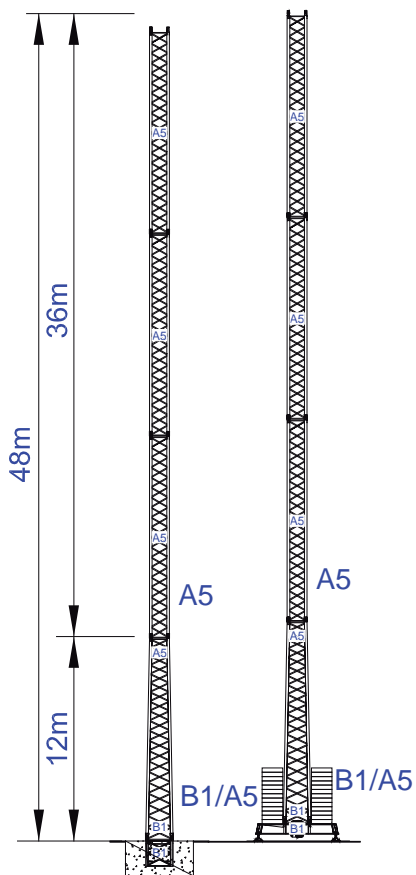
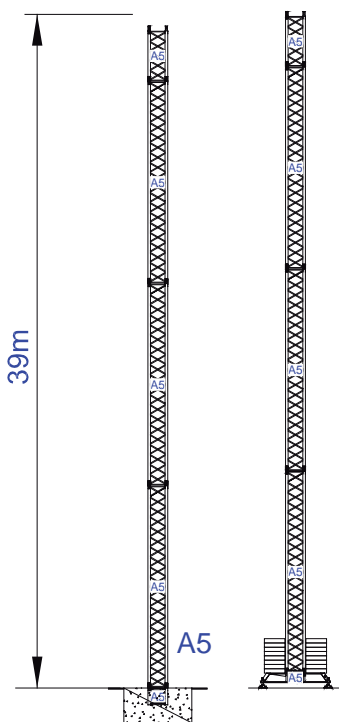
## Factory

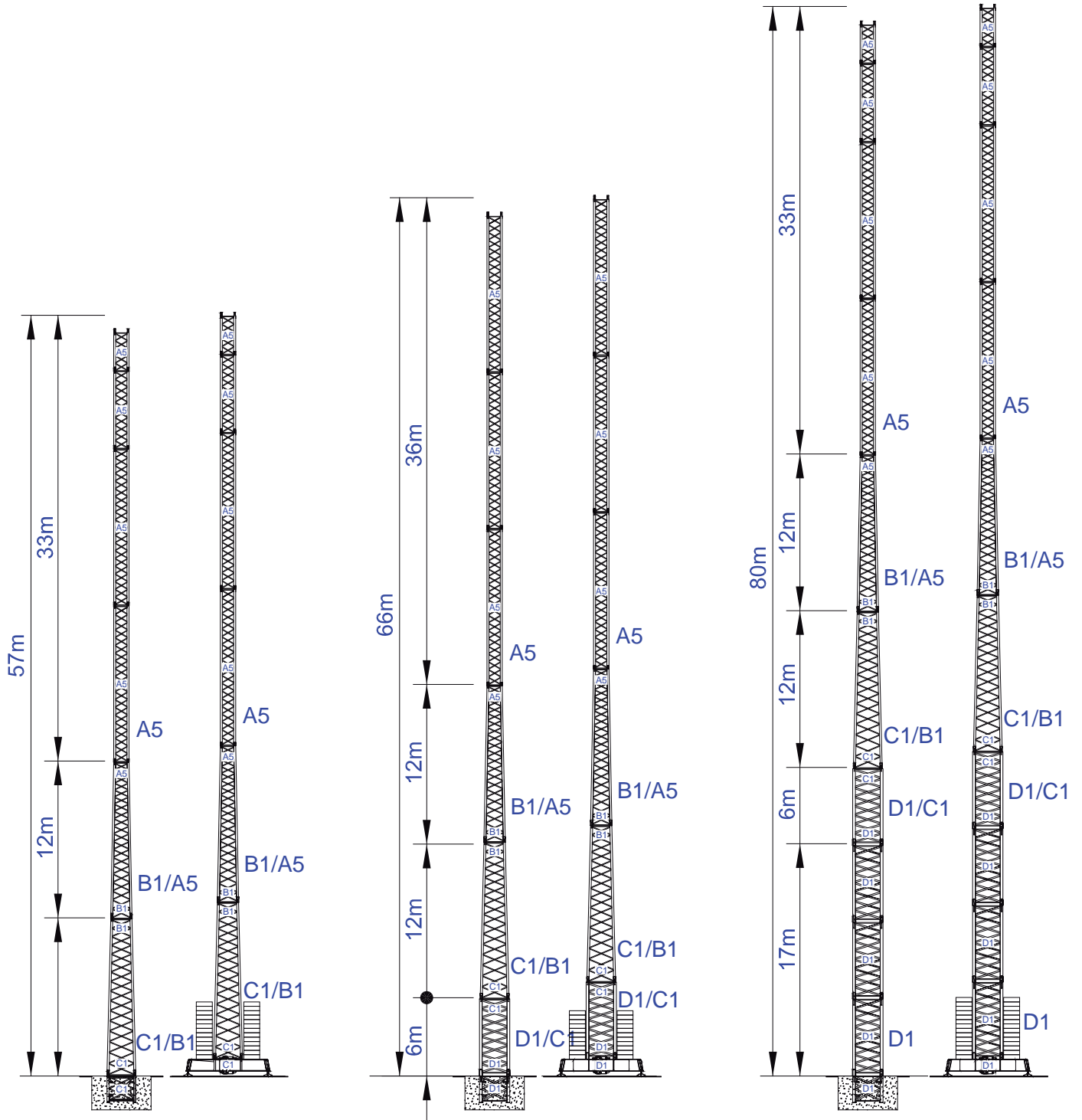
Zona Industrial de Canas de Senhorim - EN 234, 3525-040 Canas de Senhorim - Portugal  
 +351 232 673 530 sales@staffordtowercranes.com

www.staffordtowercranes.com

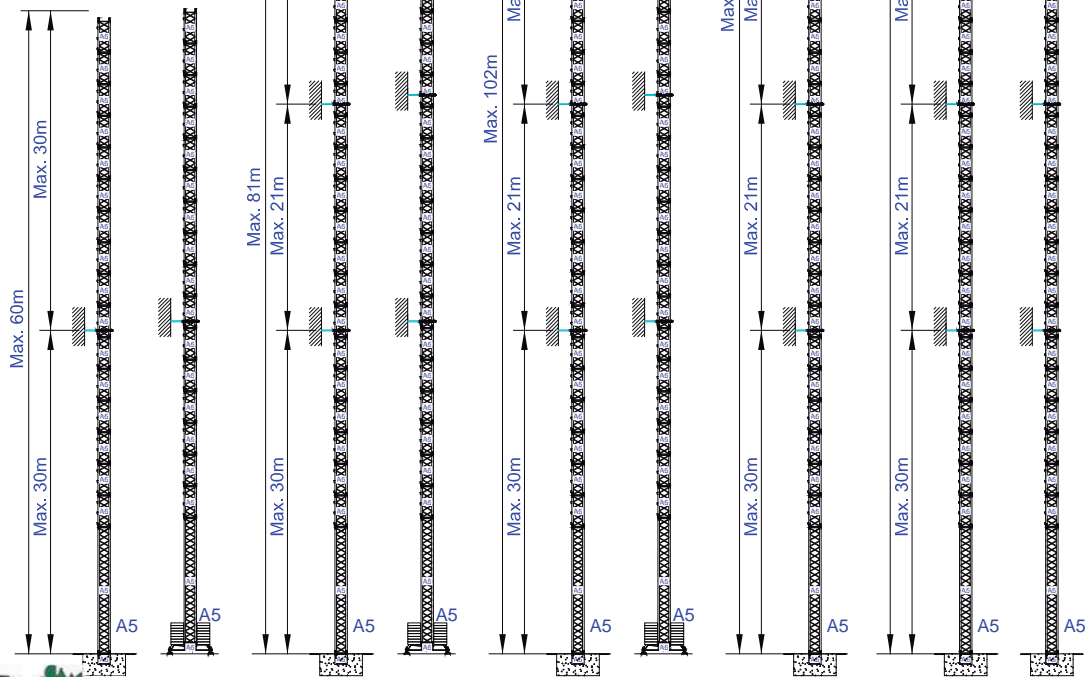
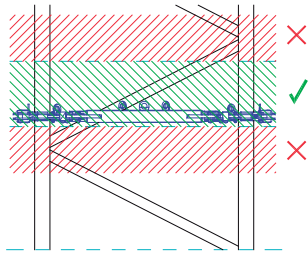
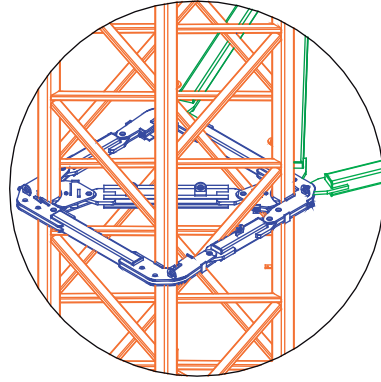


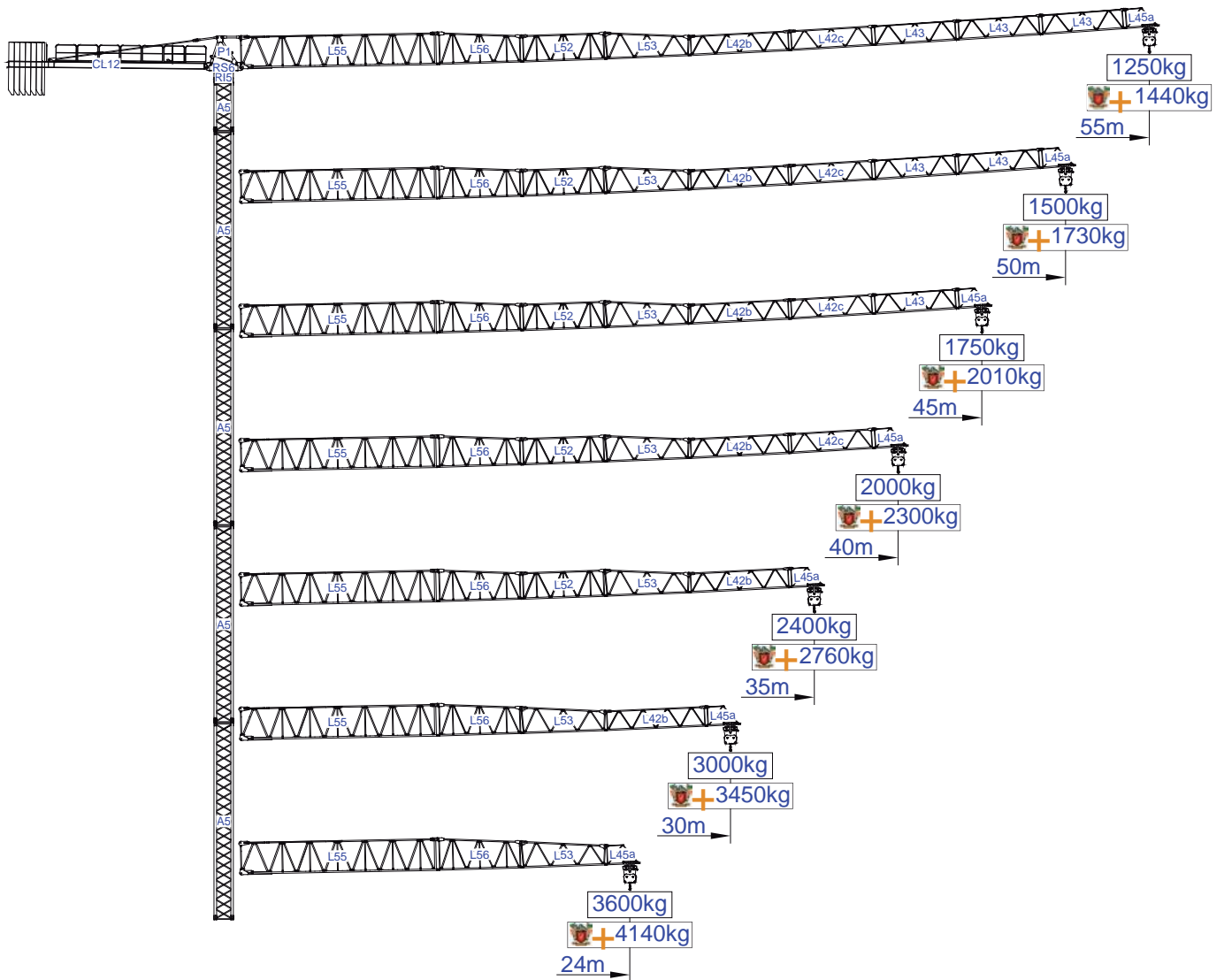
Empresa certificada no âmbito da Conceção, Fabrico e Serviço Pós-venda de Gruas Soima e componentes





More options







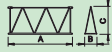
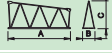
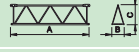
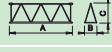

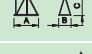
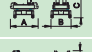
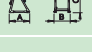
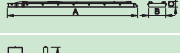


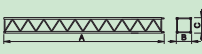
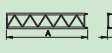

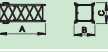
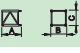
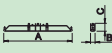
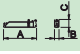
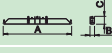
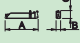
m														
		5000kg	2500kg	10	15	18	24	30	35	40	45	50	55	m
55	13000kg 6x2000kg + 1x1000kg	16.4	30.9	2500	2500	2500	2500	2500	2160	1850	1610	1410	1250	kg
				5000	5000	4540	3320	2580	2160	1850	1610	1410	1250	
50	12000kg 6x2000kg	17.3	32.5	2500	2500	2500	2500	2500	2290	1960	1710	1500		
				5000	5000	4790	3500	2730	2290	1960	1710	1500		
45	11000kg 5x2000kg + 1x1000kg	17.7	33.2	2500	2500	2500	2500	2500	2350	2010	1750			
				5000	5000	4900	3590	2800	2350	2010	1750			
40	10000kg 5x2000kg	17.6	33.0	2500	2500	2500	2500	2500	2340	2000				
				5000	5000	4870	3570	2780	2340	2000				
35	9000kg 4x2000kg + 1x1000kg	18.0	33.8	2500	2500	2500	2500	2500	2400					
				5000	5000	5000	3660	2860	2400					
30	8000kg 4x2000kg	18.8	35.3	2500	2500	2500	2500	2500						
				5000	5000	5000	3840	3000						
24	6000kg 3x2000kg	17.7	33.3	2500	2500	2500	2500							
				5000	5000	4920	3600							
		m												

SACS  
15%



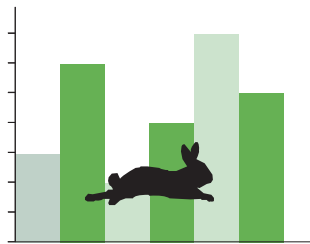
m														
		5000kg	2500kg	10	15	18	24	30	35	40	45	50	55	m
55	13000kg 6x2000kg + 1x1000kg	16.4	30.9	2500	2500	2500	2500	2500	2480	2130	1850	1620	1440	kg
				5000	5000	5000	3820	2970	2480	2130	1850	1620	1440	
50	12000kg 6x2000kg	17.3	32.5	2500	2500	2500	2500	2500	2500	2250	1970	1730		
				5000	5000	5000	4030	3140	2630	2250	1970	1730		
45	11000kg 5x2000kg + 1x1000kg	17.7	33.2	2500	2500	2500	2500	2500	2500	2310	2010			
				5000	5000	5000	4130	3220	2700	2310	2010			
40	10000kg 5x2000kg	17.6	33.0	2500	2500	2500	2500	2500	2500	2300				
				5000	5000	5000	4110	3200	2690	2300				
35	9000kg 4x2000kg + 1x1000kg	18.0	33.8	2500	2500	2500	2500	2500	2500					
				5000	5000	5000	4210	3290	2760					
30	8000kg 4x2000kg	18.8	35.3	2500	2500	2500	2500	2500						
				5000	5000	5000	4420	3450						
24	6000kg 3x2000kg	17.7	33.3	2500	2500	2500	2500							
				5000	5000	5000	4140							
		m												



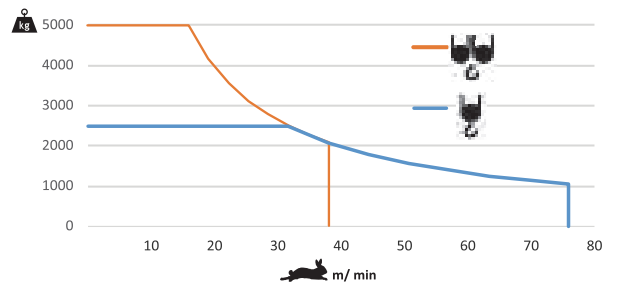
			A (mm)	B (mm)	C (mm)	kg (±5%)	
Jib / Lança / Fleche / Braccio		15kW	L55	11950	1210	2600	3810
		30kW					4050
/ Ausleger / кливер		L56	5200	1160	1930	590	
		L52	5200	1160	1650	535	
		L53	5200	1160	1650	510	
		L42b	6080	1160	1210	520	
		L42c	5180	1160	1210	370	
		L43	5100	1160	1210	3x260 780	
		L45a	2100	1160	1210	120	
	Head turntable		RS6 RI5	2250	1350	2050	2640
		P1	1660	1220	1720	720	
Counter-jib / Contra lança / Contre-flèche		CL12	12000	1250	560	2560	
Counterweight / Contrapeso / Contrepoids / Gegengewicht / Противовес		CP2	1160	330	3140	6x2000 12000	
		CP3	1160	165	3140	1x1000 1000	
Tower section / torre / Coupe tour / Sezione torre / Turmabschnitt / Секция башни		A5	11985	1160	1160	3080	
		A5	6075	1160	1160	1660	
		A5	3120	1160	1160	990	
Climbing tower section		A5	3090	1385	1385	1040	
Foundation anchor / Tramo encastrar /		A5	1275	1160	1160	450	
Base Chassis		A5	5530	500	820	1250	
			2270	360	820	2x635 1270	
			TOTAL			2520	
Base Chassis		A5s	4110	500	820	1150	
			1955	360	820	2x580 1160	
			TOTAL			2310	



	0 a 1 r.p.m.	2x4 daN.m
	0 a 60 m/min	3 kW
	15 m/min	2x3 kW

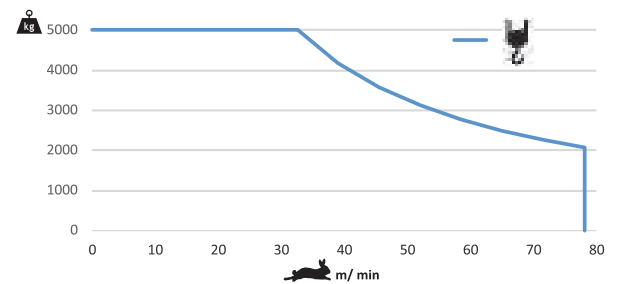


	0 a 78 m/min	15 kW



	30 kVA
	400 V +- 5% (50/60 Hz)

	0 a 78 m/min	30 kW



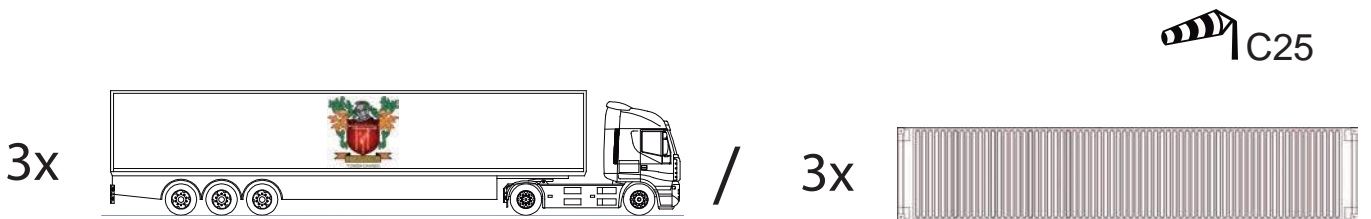
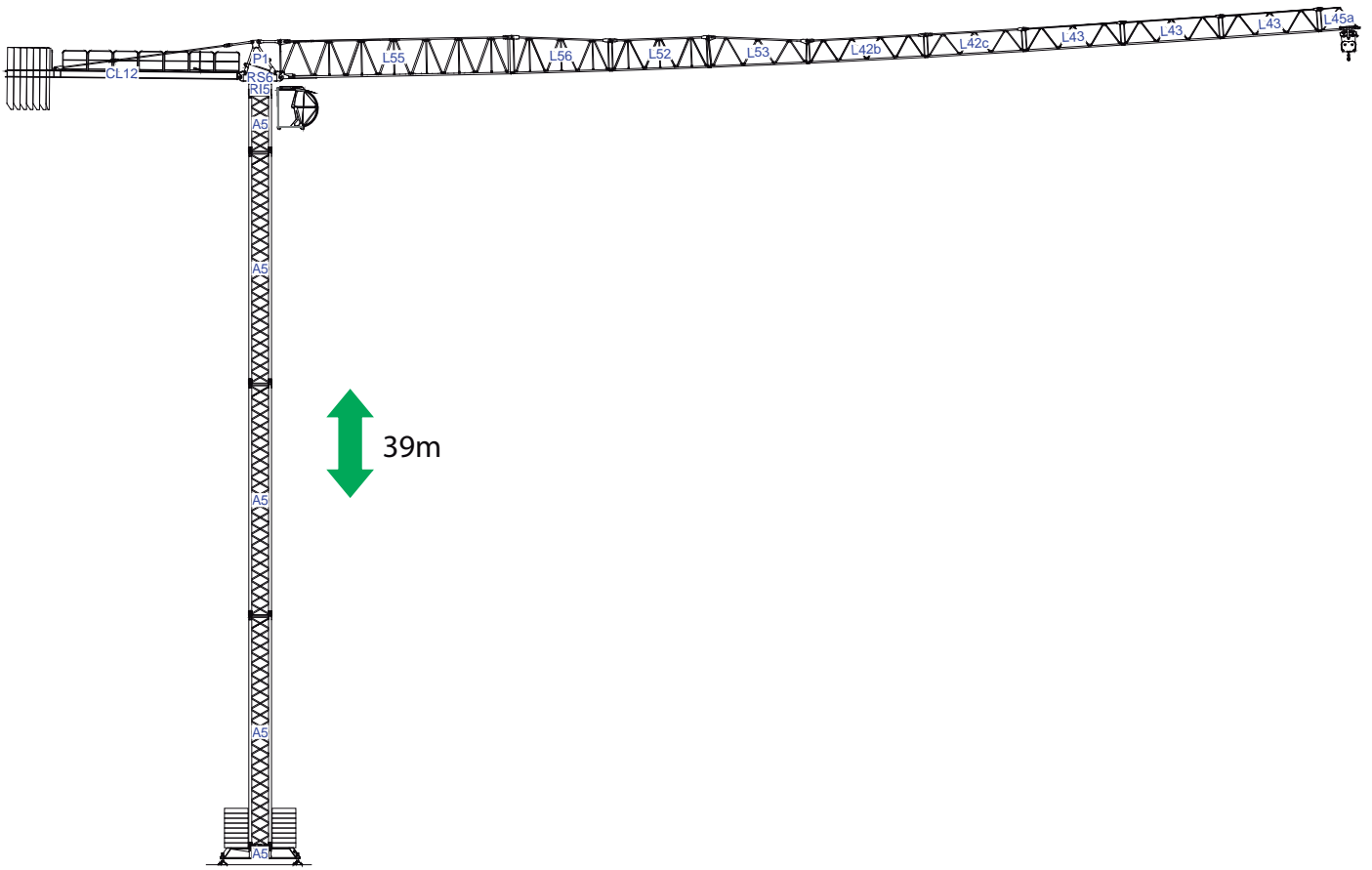
	55 kVA
	400 V +- 5% (50/60 Hz)

Max height of hoist More options

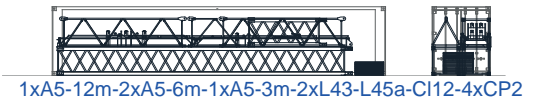
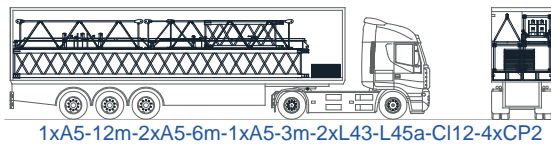
(H)Max. 132m +



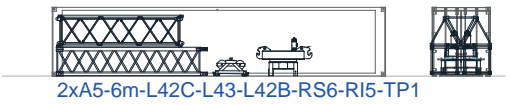




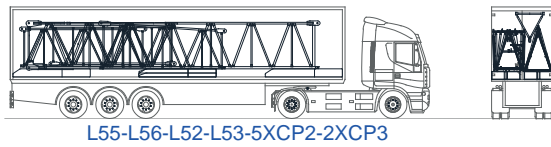
1



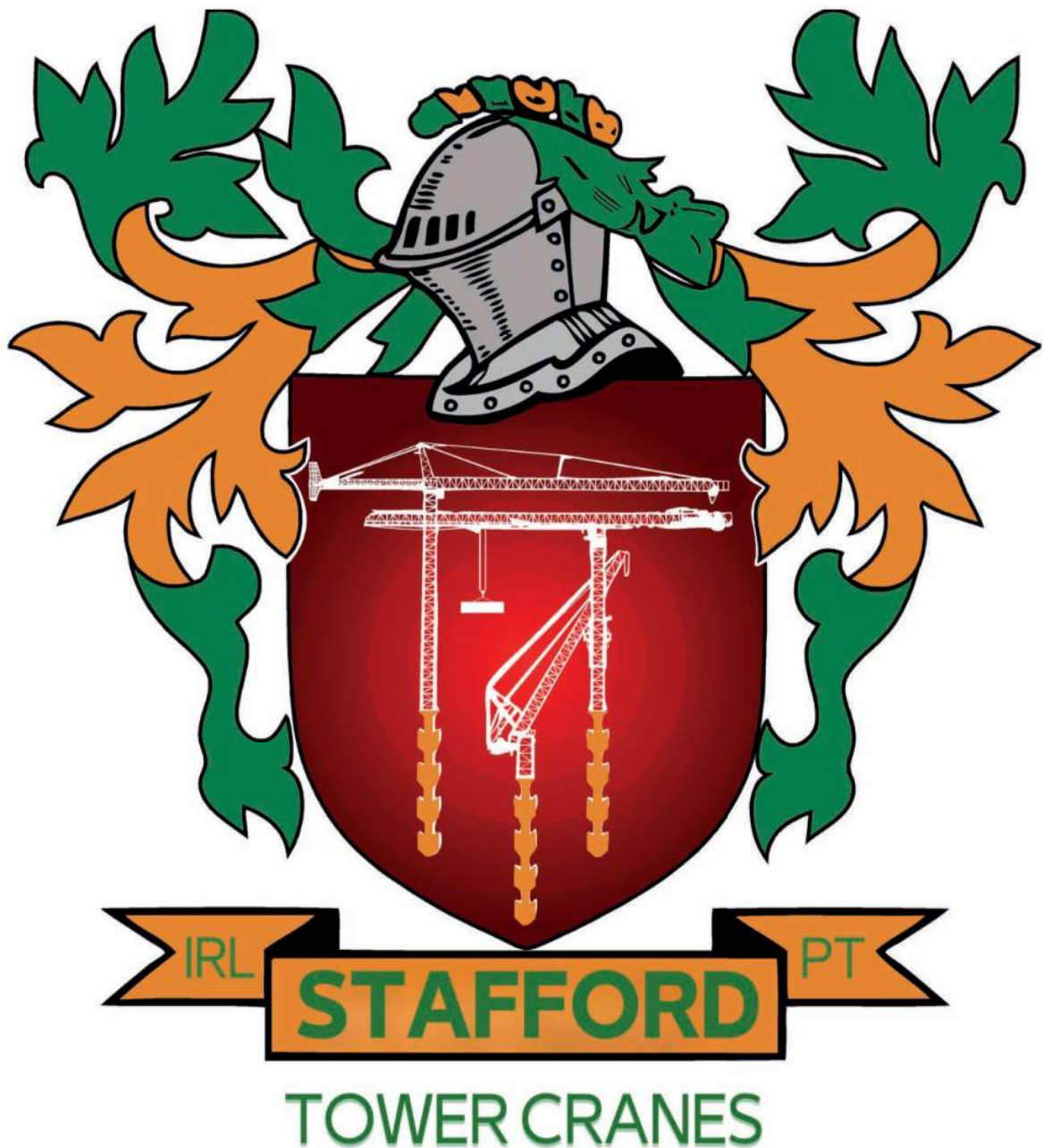
2



3








### Headquarters

 3620 S. 40th Street , Phoenix , AZ, 85040 USA

 +1 (480) 993 3302

### Factory

 Zona Industrial de Canas de Senhorim - EN 234, 3525-040 Canas de Senhorim - Portugal

 +351 232 673 530  [sales@staffordtowercranes.com](mailto:sales@staffordtowercranes.com)

 [staffordtowercranes.com](http://staffordtowercranes.com)