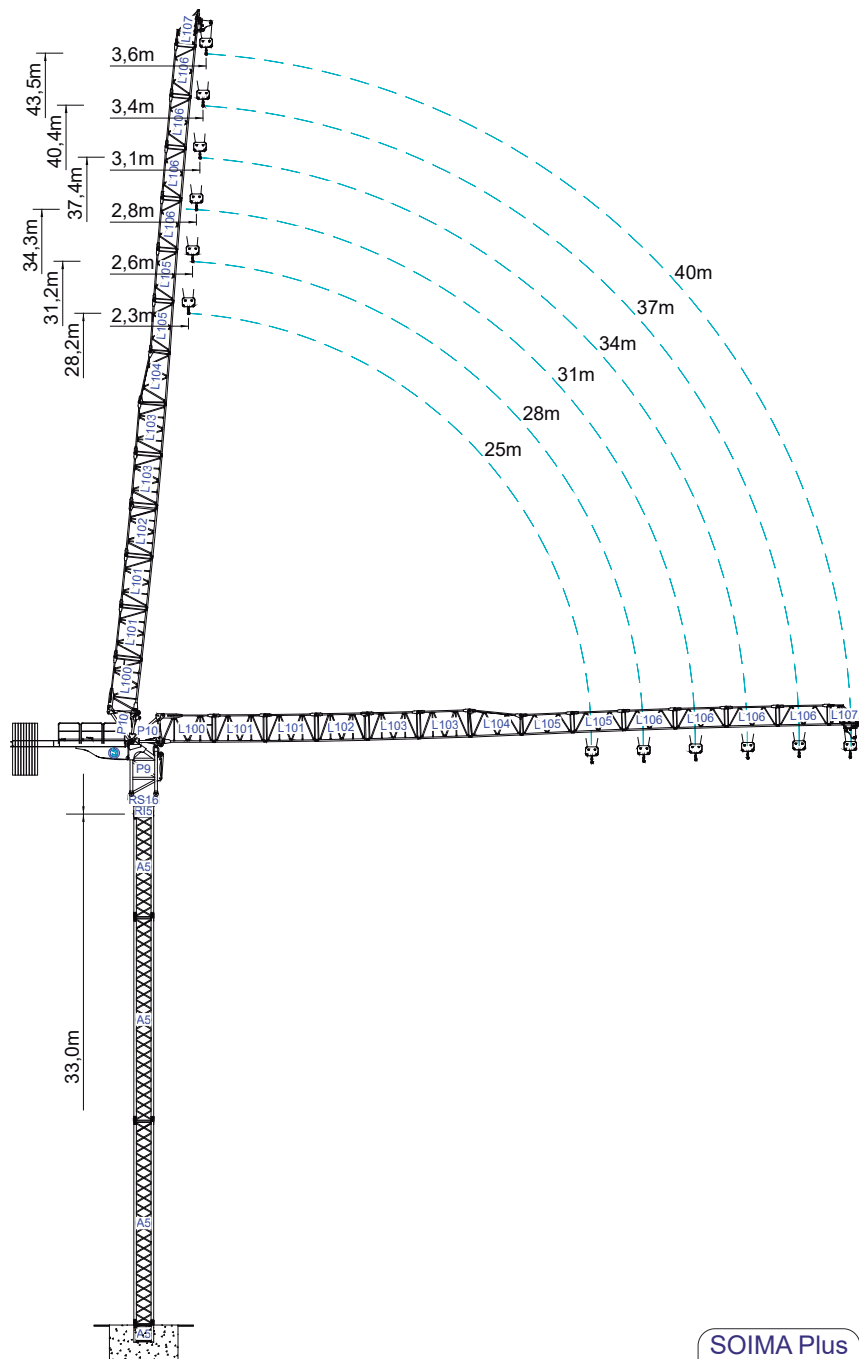




Data Sheet / Catalogo / Fiche Technique / Scheda Dati / Dentenblatt / техническая спецификация  
Metric / Métrico / Métrique / Metrico / Metrisch / метрика



Empresa certificada no âmbito da Conceção, Fabrico e Serviço Pós-venda de Gruas Soima e componentes

### Factory & HQ

Zona Industrial de Canas de Senhorim - EN 234, 3525-040 Canas de Senhorim - Portugal

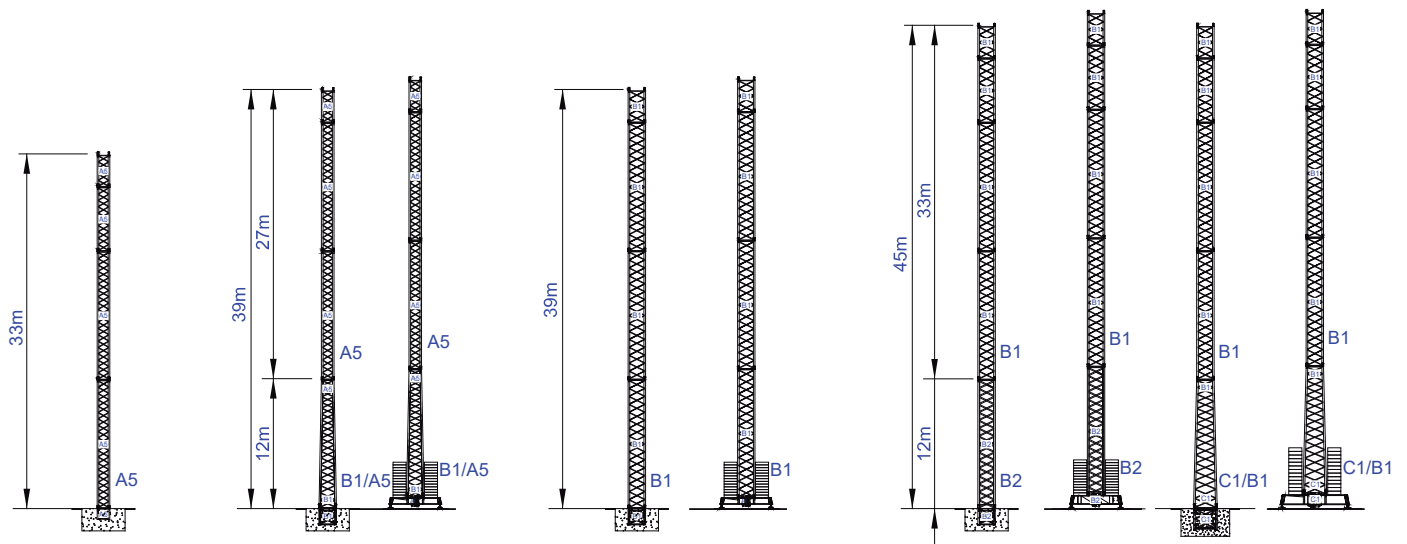
+351 232 673 530 sales@staffordtowercranes.com

staffordtowercranes.com

v.1.0001-03/23

m		4t		15	20	25	28	31	34	37	40	m
40	13 t 13x1t	22,8	4000	4000	3470	2950	2480	2100	1750	1500		kg
			4000	4000	3817	3245	2728	2310	1925	1650	⊕	
37	13 t 13x1t	23,0	4000	4000	3520	2970	2510	2200	1800			
			4000	4000	3872	3267	2761	2420	1980	⊕		
34	13 t 13x1t	23,3	4000	4000	3600	3040	2580	2210				
			4000	4000	3960	3344	2838	2431	⊕			
31	13 t 13x1t	23,4	4000	4000	3700	3100	2600					
			4000	4000	4070	3410	2860	⊕				
28	13 t 13x1t	23,5	4000	4000	3750	3120						
			4000	4000	4125	3432	⊕					
25	13 t 13x1t	23,9	4000	4000	3770							
			4000	4000	4147	⊕						
m												

Free Standing / Altura Livre / Hauteur Libre / Altezza Libera / Freie Höhe / Свободное положение



**STLH 85**

			A (mm)	B (mm)	C (mm)	kg (±5%)
Jib / Lança / Fleche / Braccio		L100	11950	1210	2600	3100
/ Ausleger / кливер		L101	3100	1160	1590	2x350 700
		L102	3100	1160	1590	350
		L103	3100	1160	1590	2x330 660
		L104	3100	1160	1590	315
		L105	3100	1160	1190	2x230 460
		L106	3100	1160	1190	4x170 680
		L107	2370	1160	1190	220
Head turntable		RS16 RI5	1780	1350	1780	2340
		P9/P10	4820	1470	2350	7340
Counter-jib / Contra lança / Contre-fleche		CL16	3140	1470	1360	850
		CL17	3200	1360	570	350
Counterweight / Contrapeso / Contrepoids / Gegengewicht / Противовес		CP	3000	160	960	13x1000 13000

Tower section / torre / Coupe tour / Sezione torre / Turmabschnitt / Секция башни		A5	11985	1160	1160	3080
		A5	6075	1160	1160	1660
		A5	3120	1160	1160	990
Climbing tower section		A5	3090	1385	1385	1040
Foundation anchor / Tramo encastrar /		A5	1275	1160	1160	450




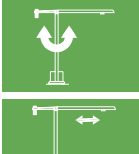



Base Chassis		A5	5530	500	820	1250
			2270	360	820	2x635 1270

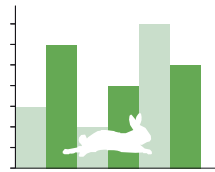
TOTAL 2520






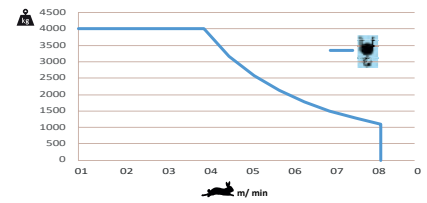
	40	37	34	31	28	25
	5610	5440	5270	5100	4870	4640






		
	1° a 85°	18,5 Kw
	0 a 0,8 r.p.m.	1x65 N.m
	0 a 50 m/min	3 kW
	0-15 m/min	2x3 kW



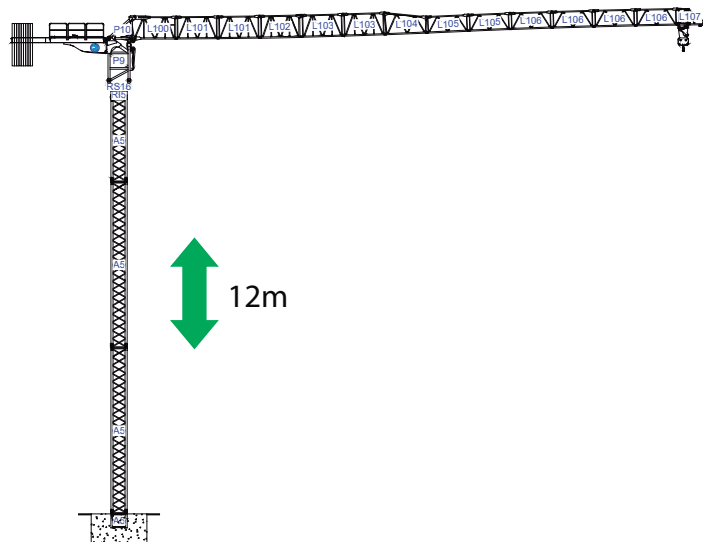
		
	0 a 75 m/min	22 kW



	58 kVA
	400 V +- 5% (50/60 Hz)

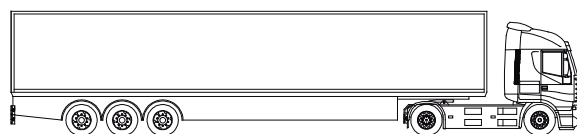
		400V 50Hz 60Hz	50m 4x16mm <sup>2</sup>
2000/14/CEE 2005/88/CEE	2006/95/CEE		

Transport / Transporte / Transport / Trasporto / Transport / Транспорт



 C25

2x



/

2x



**STLH 85**