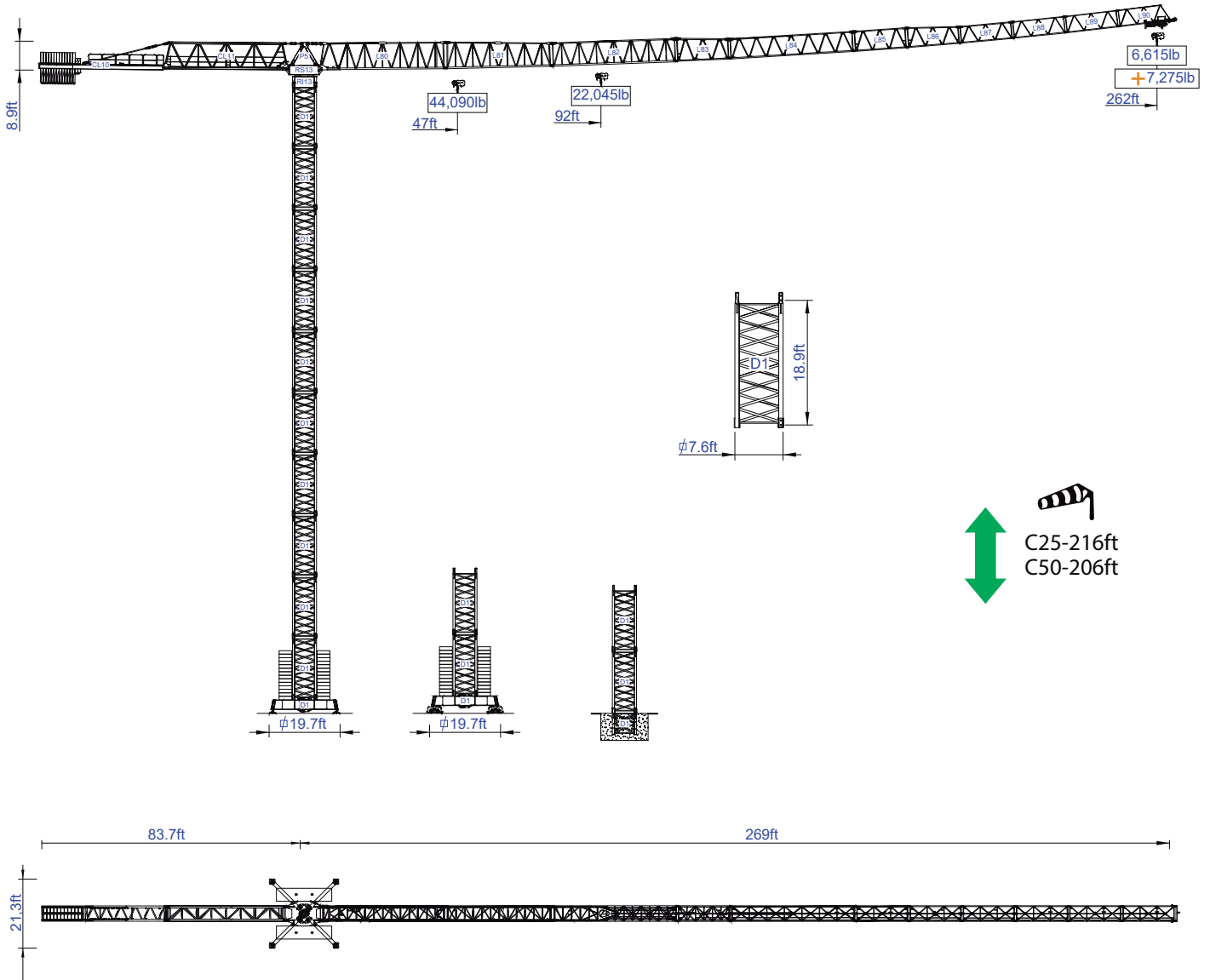




STAFFORD TOWER CRANES

STF 8030

Data Sheet Imperial



v.3.000-05/24

Factory & HQ

Zona Industrial de Canas de Senhorim - EN 234, 3525-040 Canas de Senhorim - Portugal

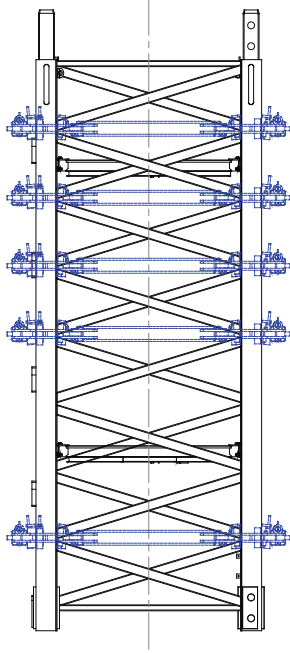
+351 232 673 530 sales@staffordtowercranes.com

staffordtowercranes.com

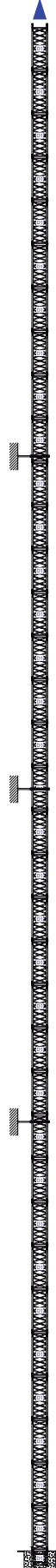
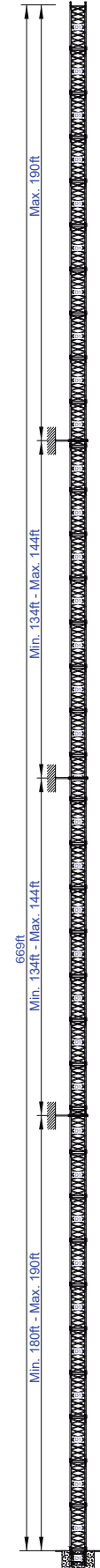
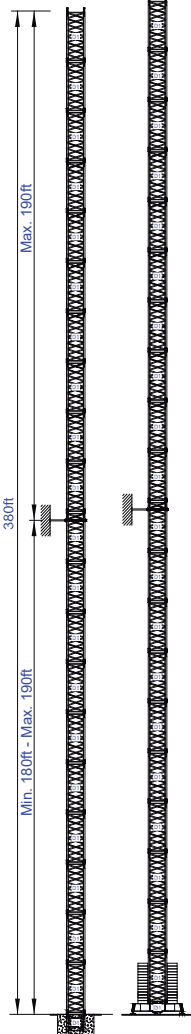
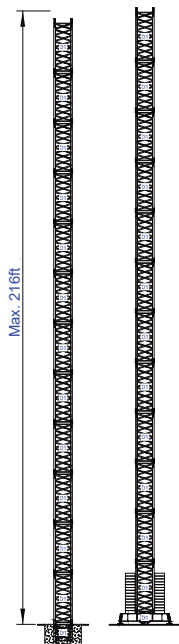
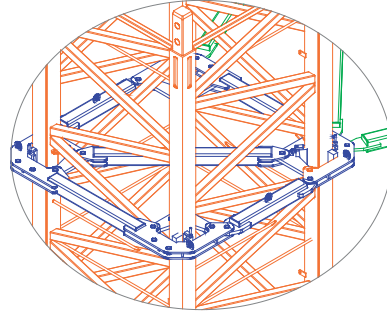


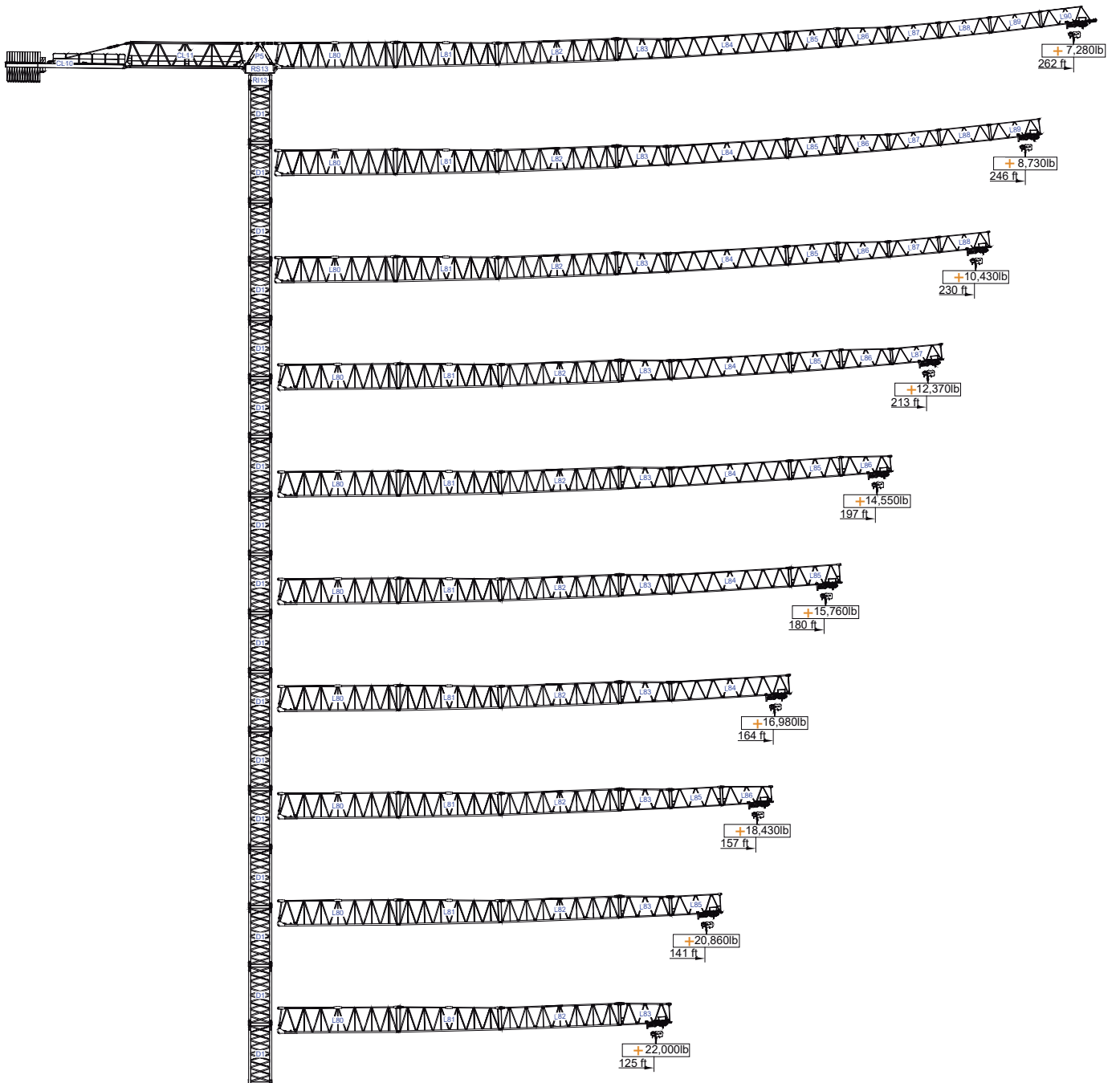
Empresa certificada no âmbito da Conceção, Fabrico e Serviço Pós-venda de Gruas Soima e componentes

More options



More options





SACS

10%



ft				33	49	59	75	92	108	125	141	157	164	180	197	213	230	246	262	ft
262	61,730lb 13x4,410lb + 2x2,205lb	46.6	92.2	22.050	22.050	22.050	22.050	22.050	20.390	17.460	15.210	13.400	12.810	11.460	10.360	9.410	8.580	7.890	7.280	lb
246	61,730lb 13x4,410lb + 2x2,205lb	50.5	100.4	22.050	22.050	22.050	22.050	22.050	22.050	19.110	16.670	14.750	14.070	12.610	11.400	10.380	9.480	8.730		
230	61,730lb 13x4,410lb + 2x2,205lb	54.8	108.6	22.050	22.050	22.050	22.050	22.050	20.830	18.190	16.090	15.370	13.800	12.500	11.380	10.430				
213	59,525lb 13x4,410lb + 1x2,205lb	58.7	116.5	22.050	22.050	22.050	22.050	22.050	22.050	19.690	17.440	16.670	14.970	13.560	12.370					
197	57,320lb 13x4,410lb	62.7	124.0	22.050	22.050	22.050	22.050	22.050	22.050	21.080	18.670	17.860	16.050	14.550						
180	52,911lb 11x4,410lb + 2x2,205lb	61.7	122.0	22.050	22.050	22.050	22.050	22.050	22.050	20.700	18.340	17.530	15.760							
164	48,502lb 10x4,410lb + 2x2,205lb	59.7	118.4	22.050	22.050	22.050	22.050	22.050	22.050	20.060	17.770	16.980								
157	46,300lb 10x4,410lb + 1x2,205lb	61.7	122.4	22.050	22.050	22.050	22.050	22.050	22.050	20.810	18.430									
141	41,890lb 9x4,410lb + 1x2,205lb	62.0	122.7	22.050	22.050	22.050	22.050	22.050	22.050	20.860										
125	39,693lb 9x4,410lb	60.7	120.1	22.050	22.050	22.050	22.050	22.050	22.050											
		lb																		




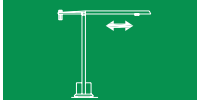





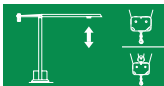

		A (ft)	B (ft)	C (ft)	lb (±5%)	
Jib / Lança / Fleche / Braccio		L80	38.80	5.10	7.90	22,270
/ Ausleger / кливер		L81	33.40	4.80	8.40	8,160
		L82	39.40	4.80	7.50	8,160
		L83	17.30	4.80	7.30	2,870
		L84	39.30	4.80	6.40	4,850
		L85	17.10	4.80	6.40	1,760
		L86	17.00	4.80	6.30	1,430
		L87	17.00	4.80	5.30	1,150
		L88	16.80	4.80	5.20	880
		L89	16.90	4.80	5.20	770
		L90	16.60	4.80	5.20	880
Head turntable / Cabeçote / Pivot		RS13	11.30	7.20	7.60	28,600
/ Testa giradischi / Kopfplattenspieler		P5	11.20	4.80	3.80	4,410
Counter-jib / Contra lança / Contre-fleche		CL11	39.20	4.80	8.00	13,670
		CL10	39.20	4.70	2.20	6,170
Cabin / Cabine / Kabine / кабина		CB3	6.70	7.10	6.20	1,650
Counterweight / Contrapeso / Contrepoids		CP4	5.20	0.80	5.20	2x2,205 4,410
/ Gegengewicht / Противовес		CP5	5.20	0.80	9.70	13x4,410 57,330

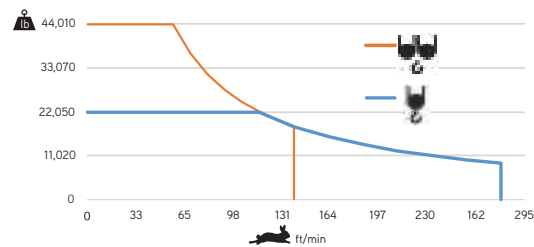
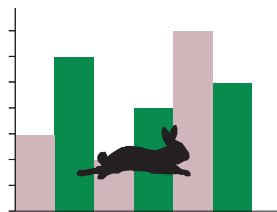
		A (ft)	B (ft)	C (ft)	lb (±5%)	
Tower section / torre / Coupe tour / Sezione torre		D1	20.50	7.60	7.60	10,030
/ Turmabschnitt / Секция башни		D1	11.00	7.60	7.60	5,690
Foundation anchor / Tramo encastrar /		D1	8.20	7.60	7.60	4,410
Base Chassis		D1	28.60	2.60	5.20	12,130
			13.80	1.20	5.20	2x6,120 12,240
					24,370	


Climbing tower section		TL1	9.30	8.50	7.50	5,880
Climbing cage		TL2	39.20	1.00	8.40	8,050
		TL3	39.20	0.80	8.40	2x4,490 8,980
		TL4	15.60	0.90	8.40	3,310





		
	0 a 1 r.p.m.	4x48 ft/lbf
	0 a 196 ft/min	11 kW
	0-32 ft/min	4x5,5 kW

		
	0 a 279 ft/min	75 kW
	0 a 140 ft/min	



	140 kVA
	400 V +- 5% (50/60 Hz)

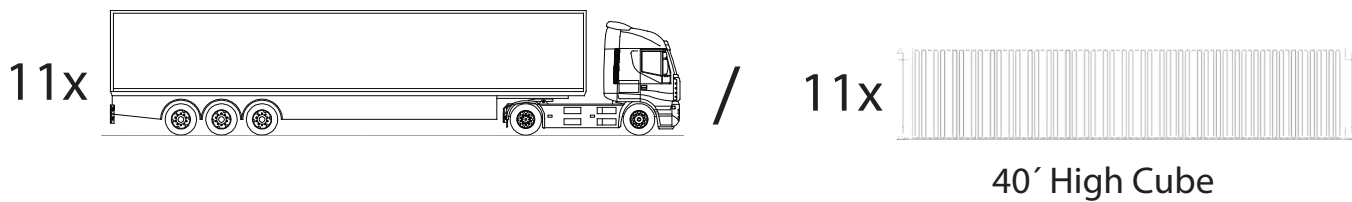
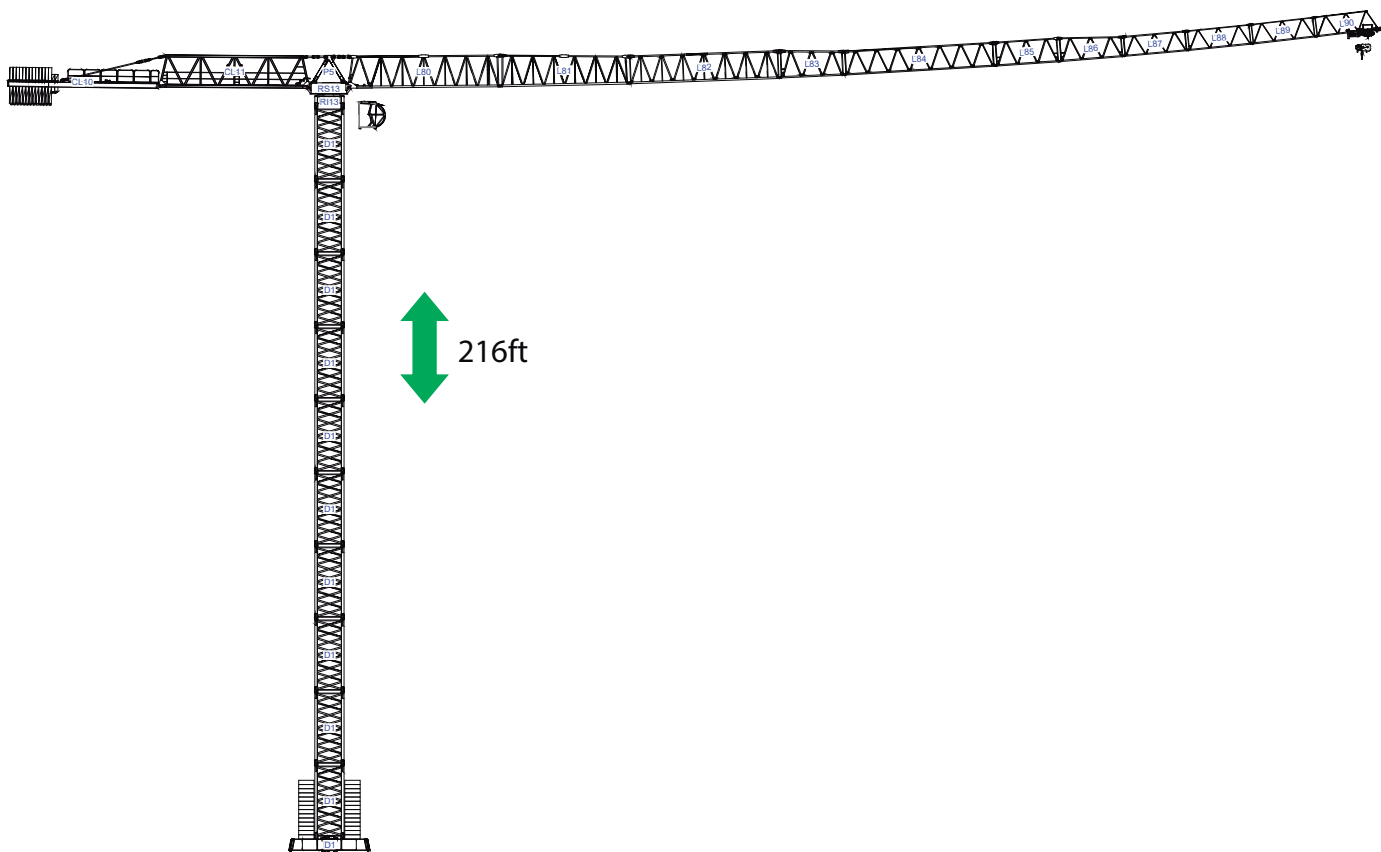
Max height of hoist

 (H)Max. 269 ft
 (H)Max. 538 ft

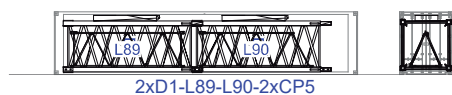
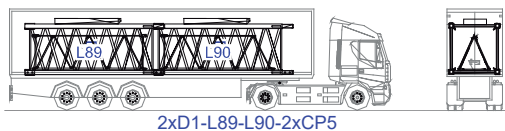
+ 



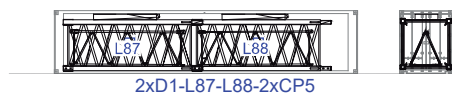
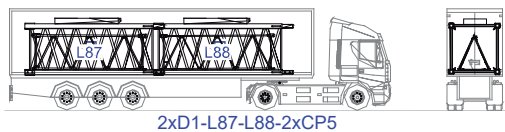
SGT 8030TL



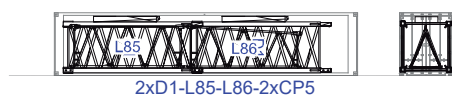
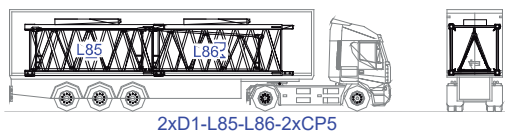
1



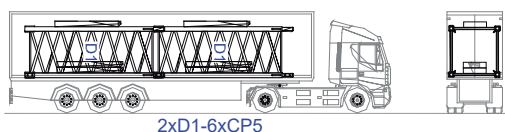
2



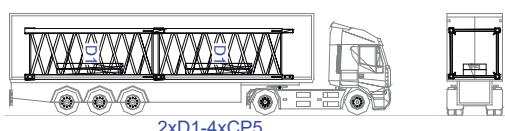
3



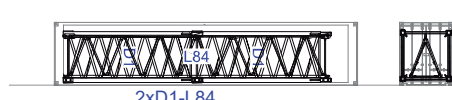
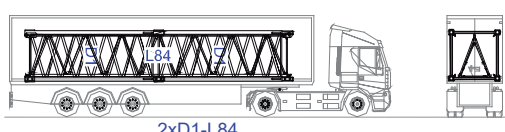
4



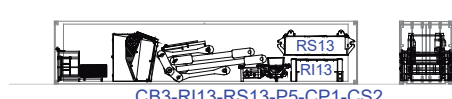
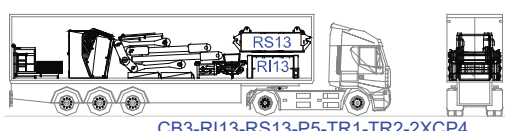
5



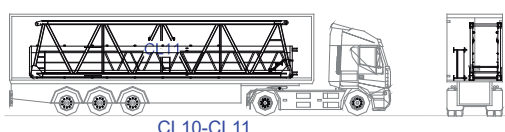
6



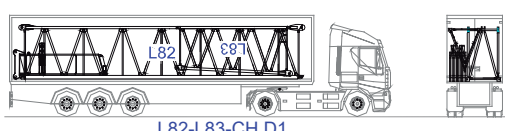
7



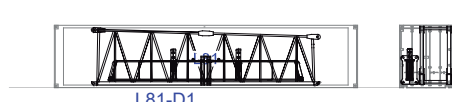
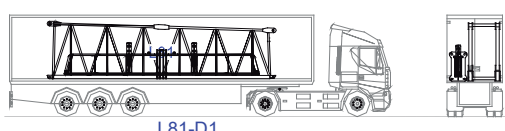
8



9



10



11

