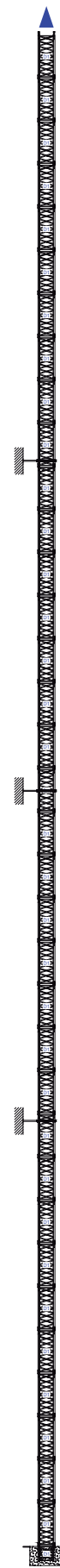
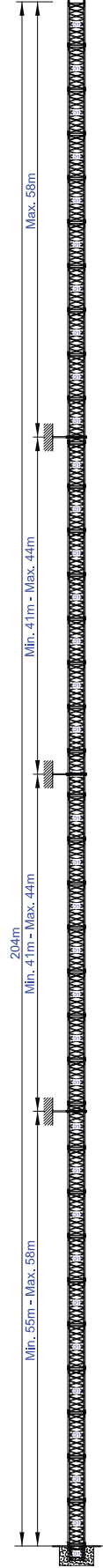
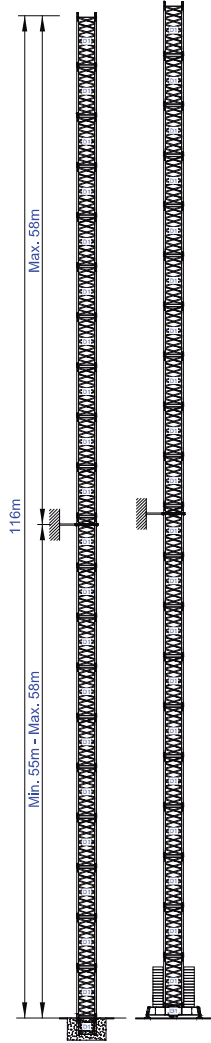
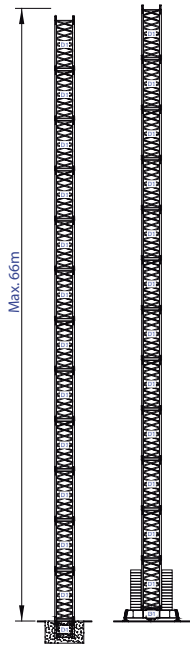
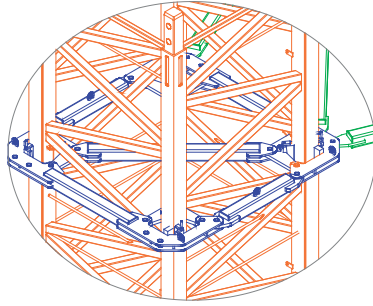
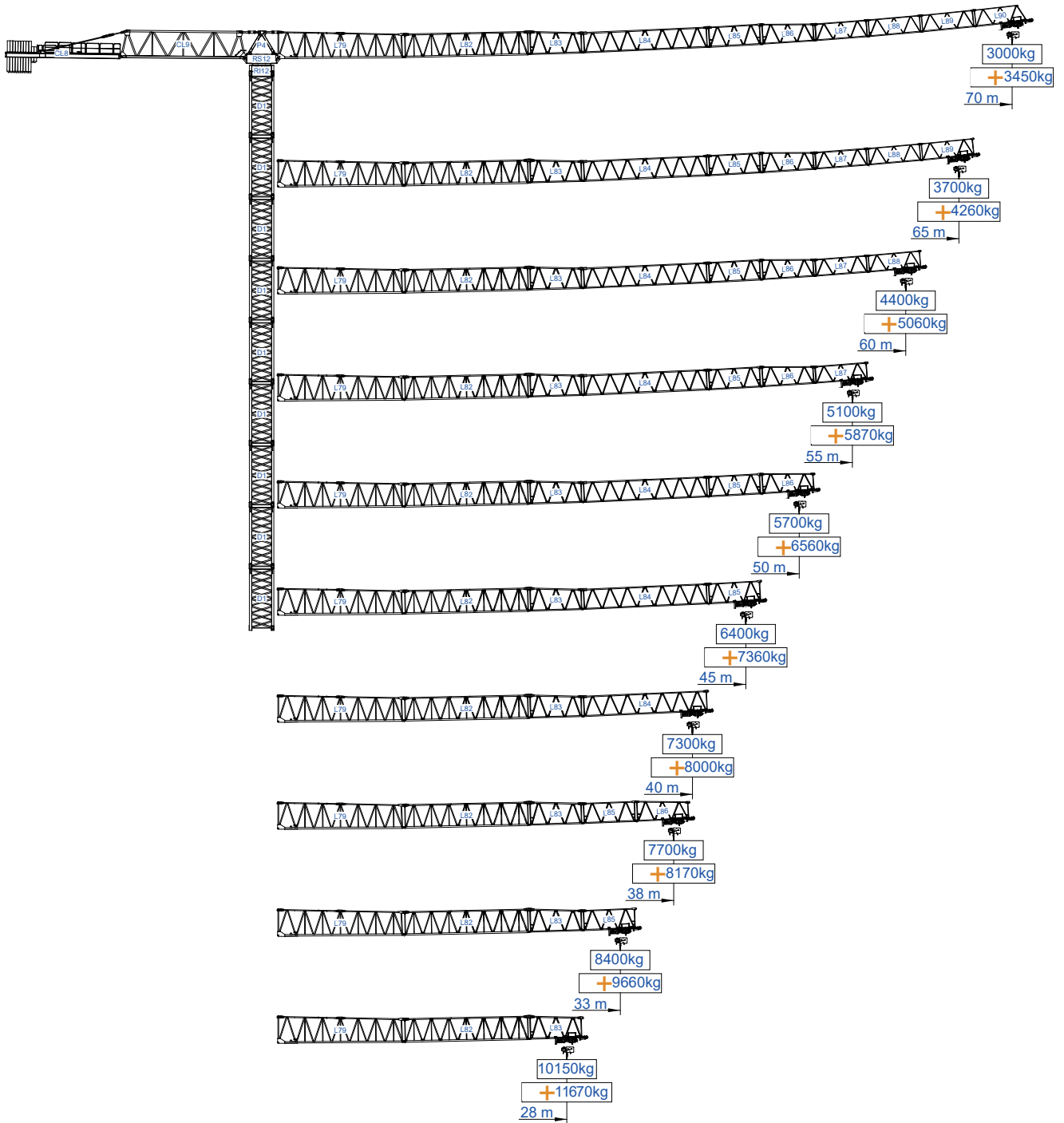


More options



More options





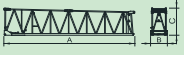
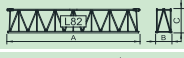


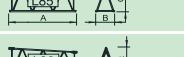
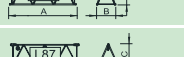
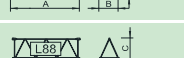
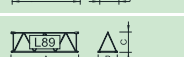
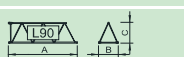


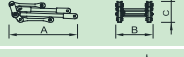

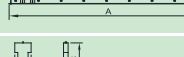

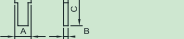
m	Diagram	Icons		Weights																m
		16000	8000	5	10	15	20	25	28	33	38	40	45	50	55	60	65	70		
70	20000kg 9x2000kg + 2x1000kg	15.3	30.2	8000	8000	8000	8000	8000	8000	7260	6200	5850	5110	4520	4040	3630	3290	3000		
				16000	16000	16000	11900	9240	8100	6660	5600	5250	4510	3920	3440	3030	2690	2400		
65	20000kg 9x2000kg + 2x1000kg	16.8	33.2	8000	8000	8000	8000	8000	8000	8000	6900	6510	5700	5050	4520	4080	3700			
				16000	16000	16000	13230	10300	9050	7460	6300	5910	5100	4450	3920	3480	3100			
60	19000kg 9x2000kg + 1x1000kg	17.9	35.5	8000	8000	8000	8000	8000	8000	8000	7410	7000	6130	5440	4870	4400				
				16000	16000	16000	14200	11080	9740	8050	6810	6400	5530	4840	4270	3800				
55	19000kg 9x2000kg + 1x1000kg	18.6	36.9	8000	8000	8000	8000	8000	8000	8000	7740	7310	6410	5690	5100					
				16000	16000	16000	14830	11580	10190	8430	7140	6710	5810	5090	4500					
50	18000kg 9x2000kg	18.7	36.9	8000	8000	8000	8000	8000	8000	8000	7750	7330	6420	5700						
				16000	16000	16000	14850	11600	10210	8450	7150	6730	5820	5100						
45	16000kg 8x2000kg	18.6	36.8	8000	8000	8000	8000	8000	8000	8000	7730	7300	6400							
				16000	16000	16000	14800	11560	10170	8420	7130	6700	5800							
40	15000kg 7x2000kg + 1x1000kg	18.6	36.8	8000	8000	8000	8000	8000	8000	8000	7730	7300								
				16000	16000	16000	14800	11560	10170	8420	7130	6700								
38	14000kg 7x2000kg	18.6	36.7	8000	8000	8000	8000	8000	8000	8000	7700									
				16000	16000	16000	14750	11520	10140	8390	7100									
33	12000kg 6x2000kg	18.6	36.8	8000	8000	8000	8000	8000	8000	8000										
				16000	16000	16000	14770	11540	10150	8400										
28	11000kg 5x2000kg + 1x1000kg	18.6	36.6	8000	8000	8000	8000	8000	8000											
				16000	16000	16000	14770	11540	10150											

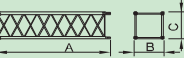
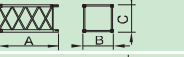

SACS
15%

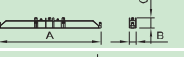






m	Diagram	Icons		Weights																m
		16000kg	8000kg	10	15	20	25	28	33	38	40	45	50	55	60	65	70			
70	20000kg 9x2000kg + 2x1000kg	15.3	30.2	8000	8000	8000	8000	8000	8350	7130	6730	5880	5200	4650	4170	3780	3450			
				16000	16000	13690	10630	9320	7660	6440	6040	5190	4510	3960	3480	3090	2760			
65	20000kg 9x2000kg + 2x1000kg	16.8	33.2	8000	8000	8000	8000	8000	8000	7940	7490	6560	5810	5200	4690	4260				
				16000	16000	15210	11850	10410	8580	7250	6800	5870	5120	4510	4000	3570				
60	19000kg 9x2000kg + 1x1000kg	17.9	35.5	8000	8000	8000	8000	8000	8000	8000	8050	7050	6260	5600	5060					
				16000	16000	16330	12740	11200	9260	7830	7360	6360	5570	4910	4370					
55	19000kg 9x2000kg + 1x1000kg	18.6	36.9	8000	8000	8000	8000	8000	8000	8000	8000	7370	6540	5870						
				16000	16000	16000	13320	11720	9690	8210	7720	6680	5850	5180						
50	18000kg 9x2000kg	18.7	36.9	8000	8000	8000	8000	8000	8000	8000	8000	8000	7380	6560						
				16000	16000	16000	13340	11740	9720	8220	7740	6690	5870							
45	16000kg 8x2000kg	18.6	36.8	8000	8000	8000	8000	8000	8000	8000	8000	8000	7360							
				16000	16000	16000	13290	11700	9680	8200	7710	6670								
40	15000kg 7x2000kg + 1x1000kg	18.6	36.8	8000	8000	8000	8000	8000	8000	8000	8000	8000								
				16000	16000	16000	13290	11700	9680	8200	7710									
38	14000kg 7x2000kg	18.6	36.7	8000	8000	8000	8000	8000	8000	8000	8000									
				16000	16000	16000	13250	11660	9650	8170										
33	12000kg 6x2000kg	18.6	36.8	8000	8000	8000	8000	8000	8000											
				16000	16000	16000	13270	11670	9660											
28	11000kg 5x2000kg + 1x1000kg	18.6	36.6	8000	8000	8000	8000	8000												
				16000	16000	16000	13270	11670												








		A (mm)	B (mm)	C (mm)	kg	
Jib / Lança / Fleche / Braccio		L79	11976	1540	2570	9300
/ Ausleger / кливер		L82	12000	1460	2275	3700
		L83	5275	1460	2230	1300
		L84	11970	1460	1950	2200
		L85	5210	1460	1945	800
		L86	5190	1460	1920	650
		L87	5190	1460	1610	520
		L88	5160	1460	1895	400
		L89	5140	1460	1590	350
		L90	5070	1460	1590	400
	Head turntable / Cabeçote / Pivot / Testa giradischi / Kopfplattenspieler		RS12 R112	3430	2200	2310
		P4	2600	1450	1040	1800
Counter-jib / Contra lança / Contre-flèche		CL9	11745	1450	2615	5360
		CL8	10925	1430	675	2600
Counterweight / Contrapeso / Contreponds / Gegengewicht / Противовес		CP4	1600	250	1570	2x1000 2000
		CP5	1020	250	3400	9x2000 18000

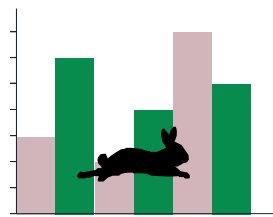
		A (mm)	B (mm)	C (mm)	kg	
Tower section / torre / Coupe tour / Sezione torre / Turmabschnitt / Секция башни		D1	6245	2322	2322	4550
		D1	3365	2322	2322	2580
Foundation anchor / Tramo encastrar /		D1	2500	2322	2322	2000



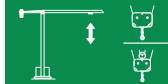
Base Chassis		D1	8725	800	1600	5500
			4200	380	1600	2x2775 5550
11050						

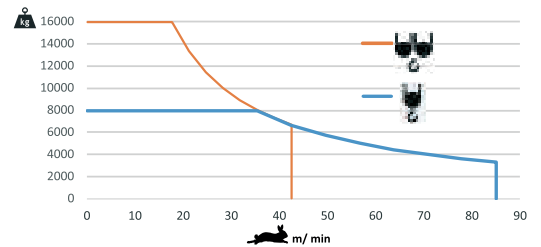
Climbing tower section		TL1	2846	2584	2300	2665
Climbing cage		TL2	11960	310	2560	3650
		TL3	11960	240	2560	2x2035 4070
		TL4	4740	270	2560	1500






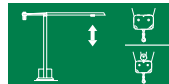
	
	0 a 1 r.p.m. 3x6,5 daN.m
	0 a 60 m/min 7,5 kW
	0-10 m/min 4x5,5 kW

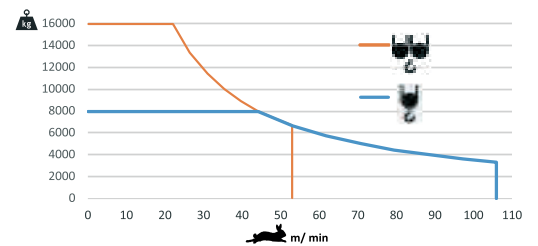



	
	0 a 85 m/min 0 a 42,5 m/min
	55 kW






	100 kVA 400 V +- 5% (50/60 Hz)
--	-----------------------------------

	
	0 a 106 m/min 0 a 53 m/min
	75 kW

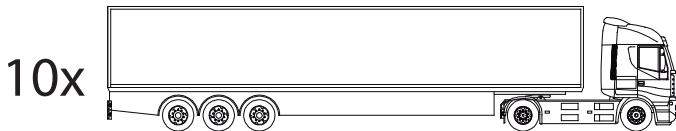
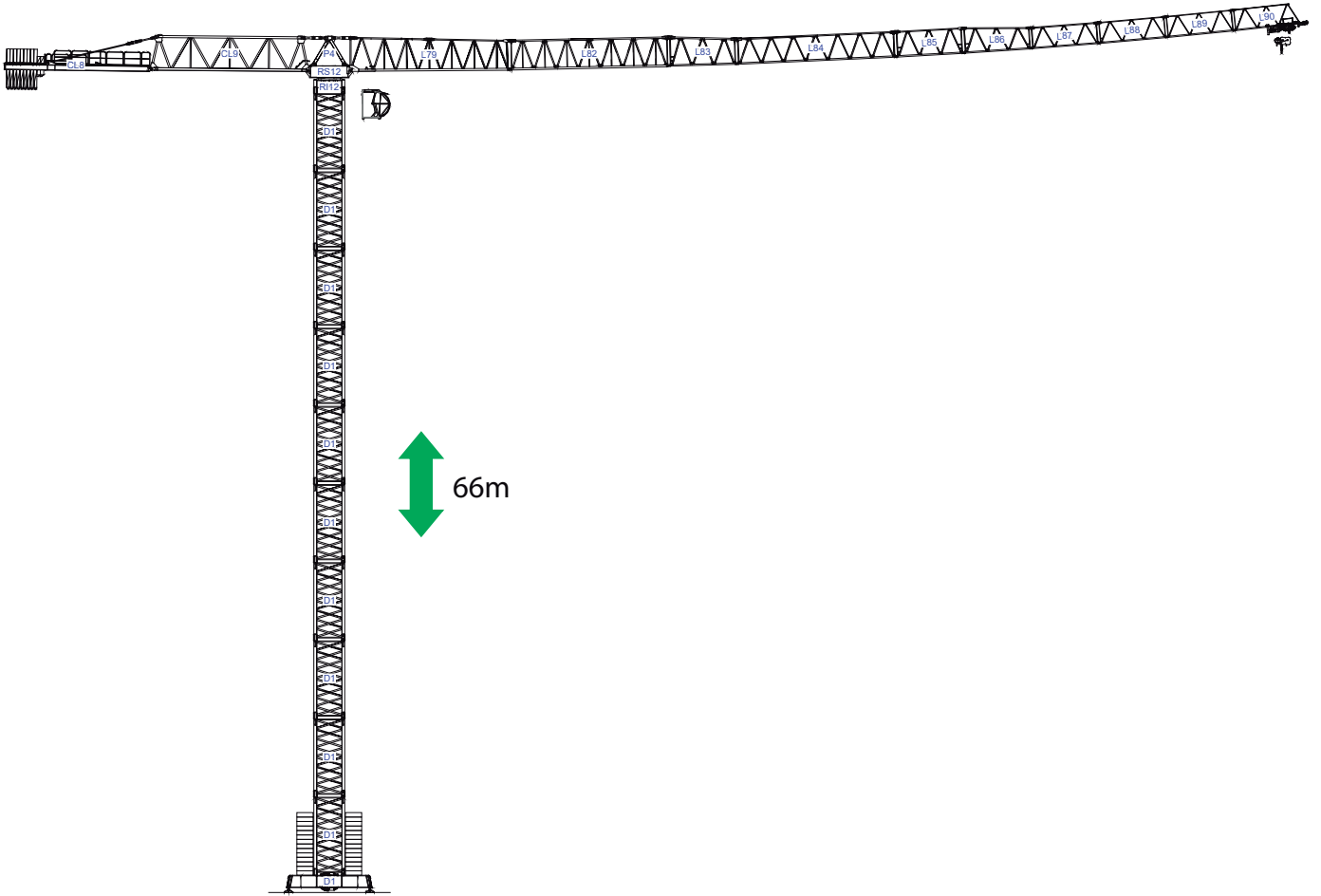


	130 kVA 400 V +- 5% (50/60 Hz)
--	-----------------------------------

Max height of hoist

 (H)Max. 82m ^{More options} 
 (H)Max. 164m





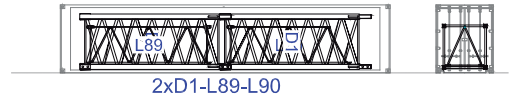
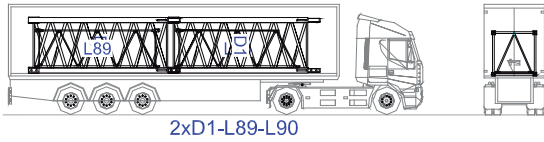
/



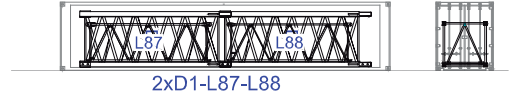
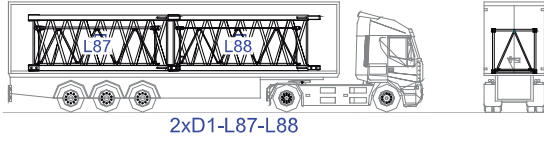
40' High Cube



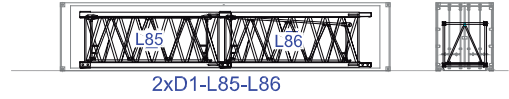
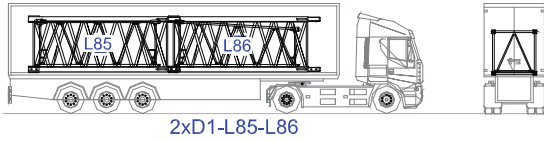
1



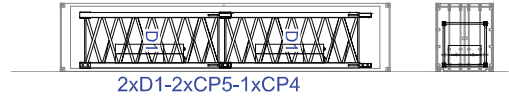
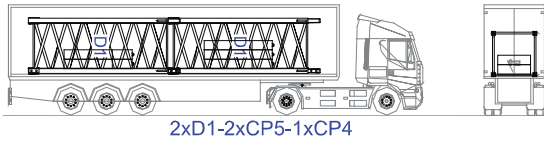
2



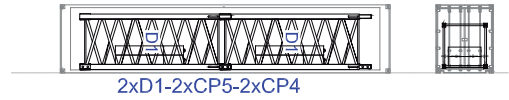
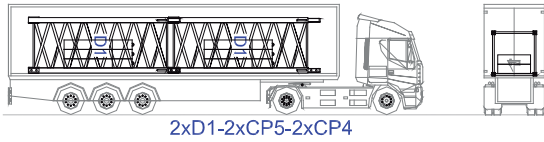
3



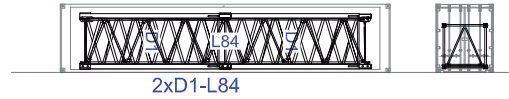
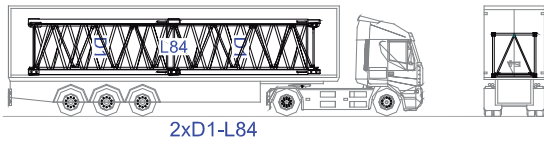
4



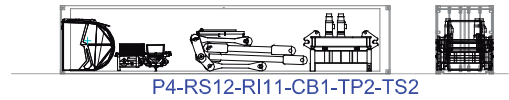
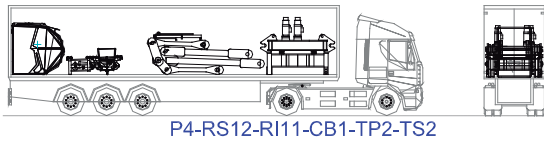
5



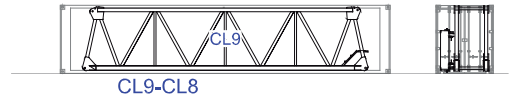
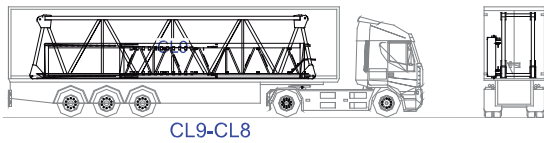
6



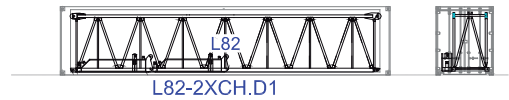
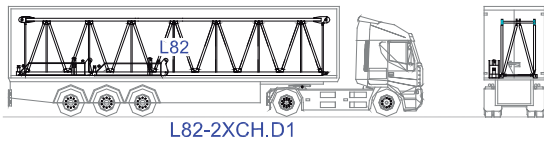
7



8



9



10

