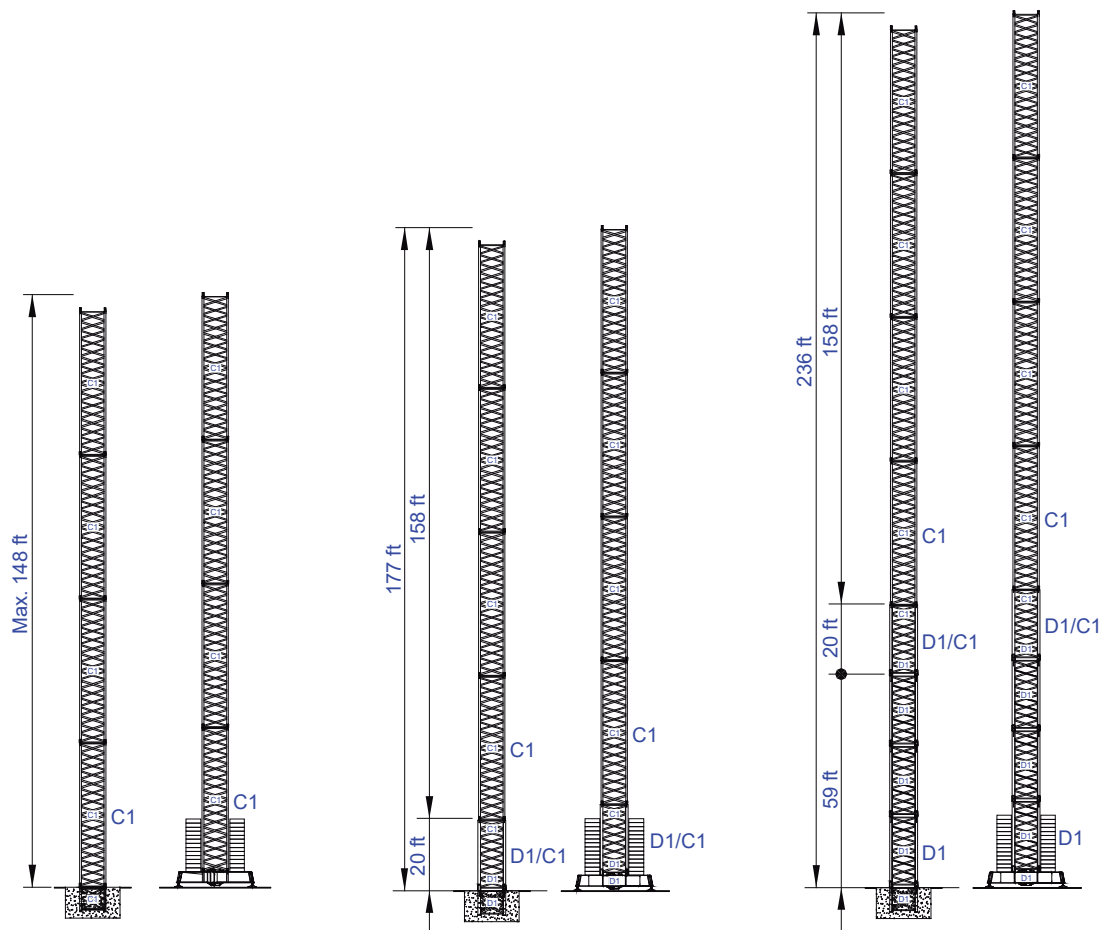
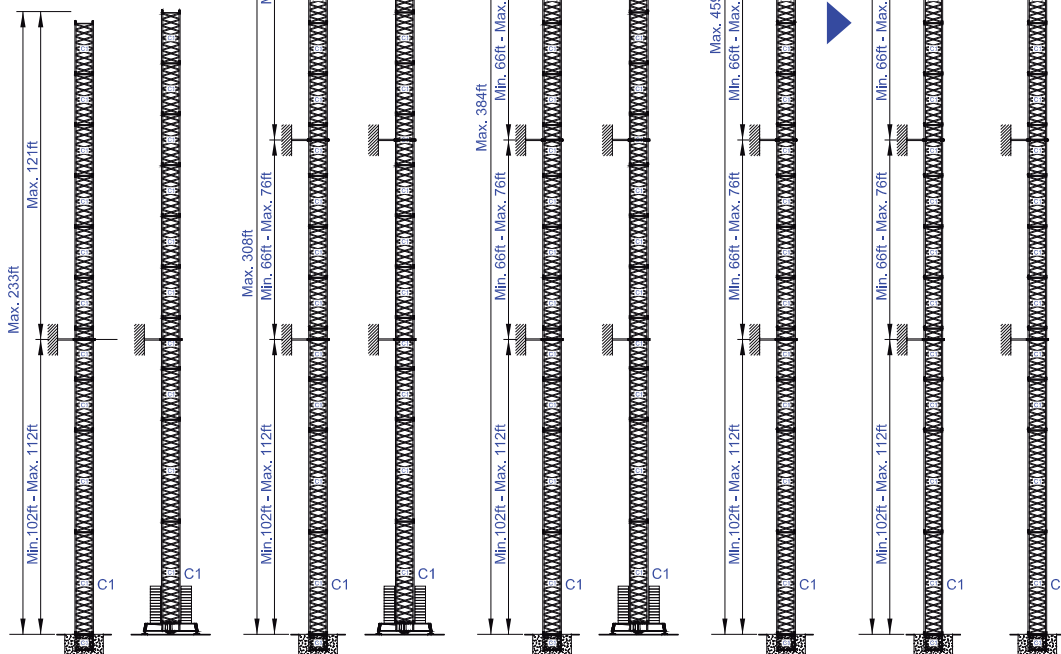
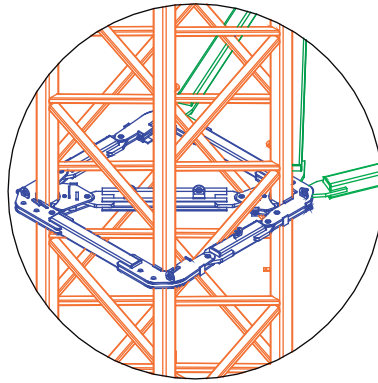
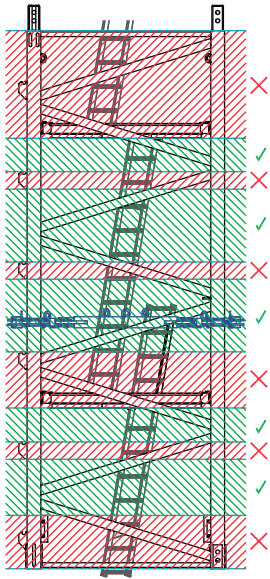


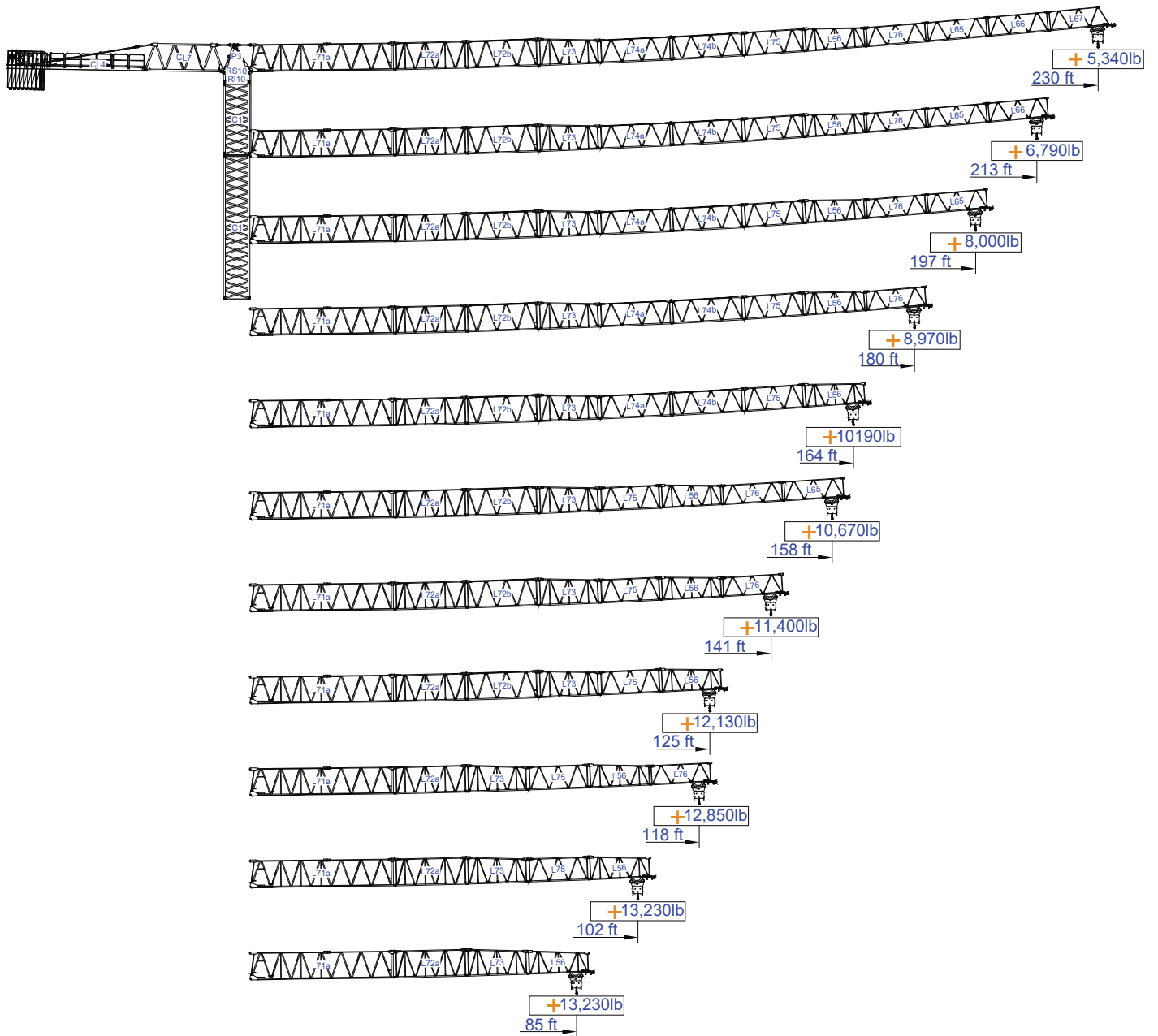
Empresa certificada no âmbito da Conceção, Fabrico e Serviço Pós-venda de Gruas Soima e componentes





More options





# SACS 10%








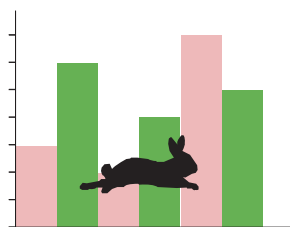
ft	Diagram	Crane Configurations		Span (ft)																ft
		26,460lb	13,230lb	33	49	59	69	85	102	118	125	141	157	164	180	197	213	230		
230	35,280lb 7x4,4010lb + 2x2,205lb	48.2	95.5	13.230	13.230	13.230	13.230	13.230	13.230	11.530	10.850	9.460	8.330	7.960	7.120	6.440	5.840	5.340		
				26.460	26.460	23.280	19.640	15.450	12.610	10.560	9.880	8.490	7.360	6.990	6.150	5.470	4.870	4.370		
213	35,280lb 7x4,4010lb + 2x2,205lb	54.5	108.3	13.230	13.230	13.230	13.230	13.230	13.230	13.230	12.460	10.890	9.630	9.190	8.250	7.470	6.790			
				26.460	26.460	26.460	22.580	17.840	14.590	12.280	11.490	9.920	8.660	8.220	7.280	6.500	5.820			
197	35,280lb 7x4,4010lb + 2x2,205lb	58.1	115.2	13.230	13.230	13.230	13.230	13.230	13.230	13.230	13.230	11.640	10.320	9.850	8.860	8.000				
				26.460	26.460	26.460	24.160	19.090	15.650	13.160	12.370	10.670	9.350	8.880	7.890	7.030				
180	33,075lb 7x4,4010lb + 1x2,205lb	58.7	116.5	13.230	13.230	13.230	13.230	13.230	13.230	13.230	13.230	11.820	10.450	9.990	8.970					
				26.460	26.460	26.460	24.490	19.360	15.900	13.380	12.570	10.850	9.480	9.020	8.000					
164	33,075lb 7x4,4010lb + 1x2,205lb	59.7	118.8	13.230	13.230	13.230	13.230	13.230	13.230	13.230	13.230	12.060	10.670	10.190						
				26.460	26.460	26.460	24.960	19.730	16.200	13.650	12.810	11.090	9.700	9.220						
157	28,665lb 6x4,4010lb + 1x2,205lb	59.7	118.8	13.230	13.230	13.230	13.230	13.230	13.230	13.230	13.230	12.060	10.670							
				26.460	26.460	26.460	24.980	19.780	16.230	13.650	12.830	11.090	9.700							
141	24,255lb 5x4,4010lb + 1x2,205lb	56.8	112.9	13.230	13.230	13.230	13.230	13.230	13.230	13.230	13.230	13.050	11.400							
				26.460	26.460	26.460	23.660	18.670	15.300	12.870	12.080	10.430								
125	19,845lb 4x4,4010lb + 1x2,205lb	53.1	105.3	13.230	13.230	13.230	13.230	13.230	13.230	12.870	12.130									
				26.460	26.460	25.970	21.960	17.310	14.150	11.900	11.160									
118	17,640lb 4x4,4010lb	53.1	105.3	13.230	13.230	13.230	13.230	13.230	13.230	12.850										
				26.460	26.460	25.950	21.910	17.280	14.150	11.880										
102	15,455lb 3x4,4010lb + 1x2,205lb	51.2	101.7	13.230	13.230	13.230	13.230	13.230	13.230											
				26.460	26.460	24.960	21.100	16.620	13.580											
85	13,270lb 3x4,4010lb	50.2	99.7	13.230	13.230	13.230	13.230	13.230												
				26.460	26.460	23.740	20.040	15.760												






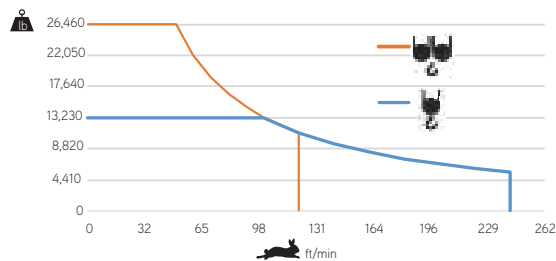
			A (ft)	B (ft)	C (ft)	lb	
Jib / Lança / Fleche / Braccio		L71A	39.30	6.20	9.50	14,880	
/ Ausleger / кливер		L72A	20.30	3.80	7.40	3,090	
		L72B	20.30	3.80	7.40	2,510	
		L73	17.20	3.80	7.40	1,720	
		L74A	20.20	3.80	6.40	1,830	
		L74B	20.20	3.80	6.40	1,570	
		L75	17.10	3.80	6.40	1,230	
		L56	17.10	3.80	6.30	1,170	
		L76	16.90	3.80	5.30	880	
		L65	16.80	3.80	5.30	790	
		L66	16.80	3.80	5.30	660	
		L67	16.80	3.80	5.30	660	
	Head turntable / Cabeçote / Pivot / Testa giradischi / Kopfplattenspieler		RS10 RI10	8.60	7.20	7.10	17,640
			P3	8.00	4.30	2.50	2,800
	Counter-jib / Contra lança / Contre-fleche		CL7	21.20	4.10	7.50	5,730
		CL4	37.40	4.90	1.60	8,270	
Hoisting Winch +rope / Elevação +cabo		MP2	6.70	6.10	4.00	5,620	
Counterweight / Contrapeso / Contrepoids / Gegengewicht / Противовес		CP2	3.80	1.10	10.30	8x4,410 35,280	
		CP3	3.80	0.50	10.30	2x2,205 4,410	
Tower section / torre / Coupe tour / Sezione torre / Turmabschnitt / Секция башни		C1	39.40	7.20	7.20	9,260	
		C1	20.10	7.20	7.20	4,850	
		C1	10.50	7.20	7.20	2,650	
Climbing tower section		C1	10.50	7.40	7.40	3,000	
Foundation anchor / Tramo encastrar /		C1	7.50	7.10	7.10	1,870	
Base Chassis		C1	26.70	2.60	4.50	10,140	
			13.80	1.20	4.50	2x3,750 7,500	
TOTAL						17,640	
Base Chassis		C1s	21.70	2.60	4.50	7,540	
			10.40	1.20	4.50	2x4,060 8,120	
TOTAL						15,660	







		
	0 a 1 r.p.m.	3x36 ft/lbf
	0 a 196ft/min	5,5 kW
	0 a 32ft/min	2x4 kW

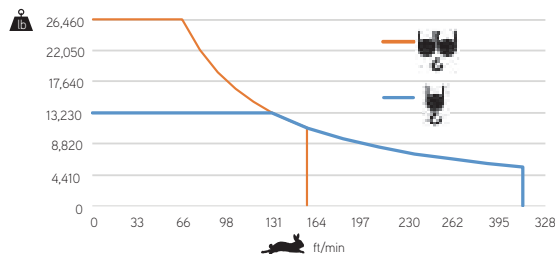



		
	0 a 242 ft/min	0 a 121 ft/min
		37 kW






	55 kVA
	400 V +- 5% (50/60 Hz)

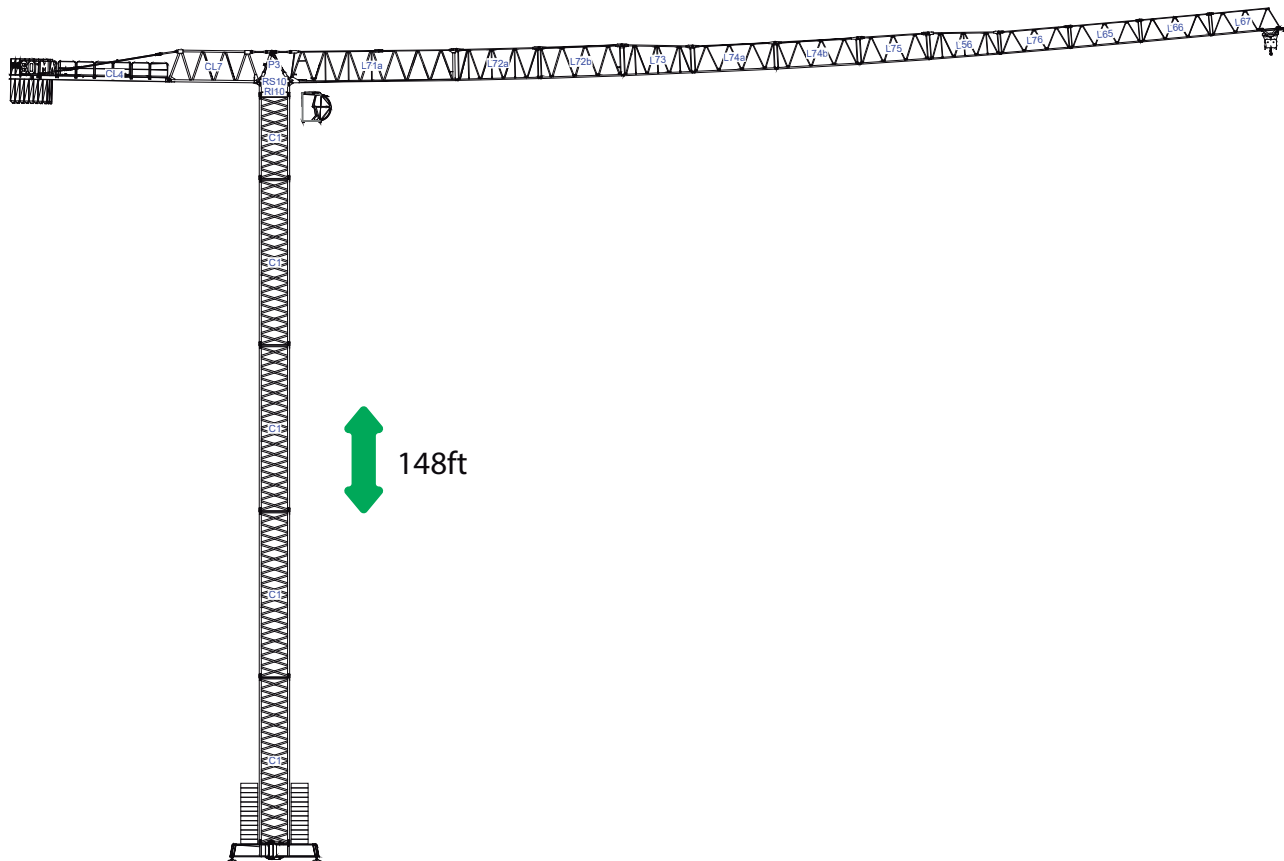
		
	0 a 312 ft/min	0 a 156 ft/min
		45 kW



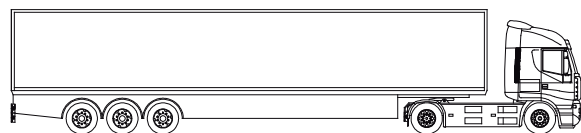
	65 kVA
	400 V +- 5% (50/60 Hz)

Max height of hoist  
 (H)Max. 177ft  
 (H)Max. 354ft  
 +  More options



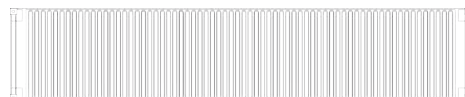


8x



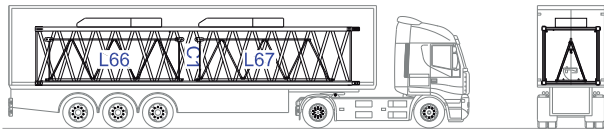
/

8x

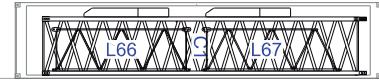
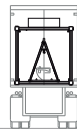




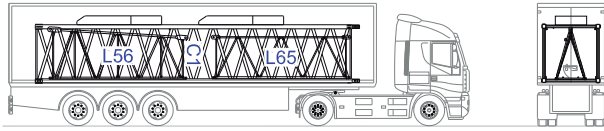
1



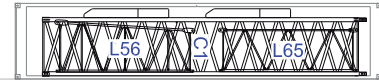
C1-L66-L67-2xCP2



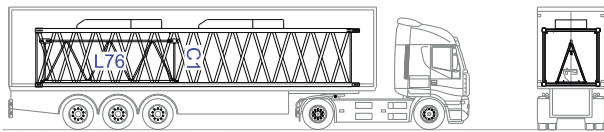
2



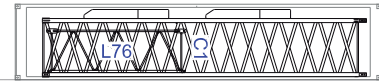
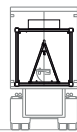
C1-L56-L65-2xCP2



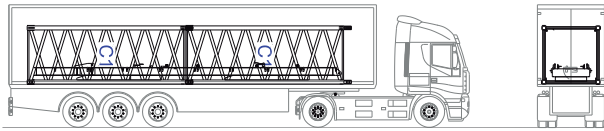
3



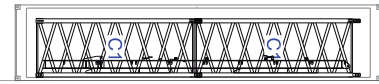
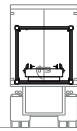
C1-L76-2xCP2



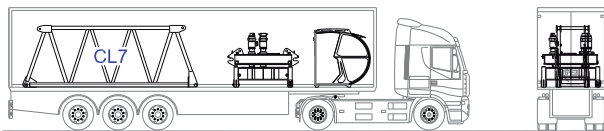
4



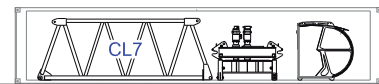
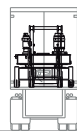
2xC1-CL4-2xCP3



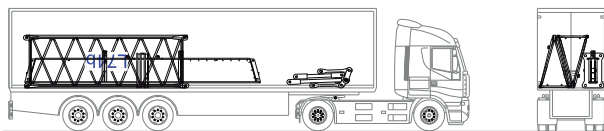
5



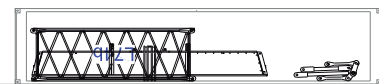
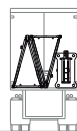
CL7-RI10-RS10-C1



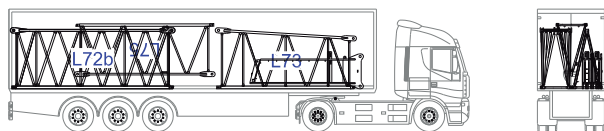
6



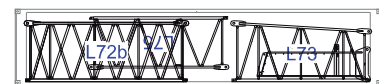
L42a-L42b-C1-P3



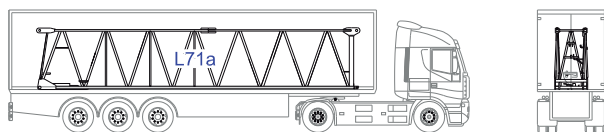
7



L72a-L72b-L73-L75-2xC1



8



CL7-RI10-RS10-C1

