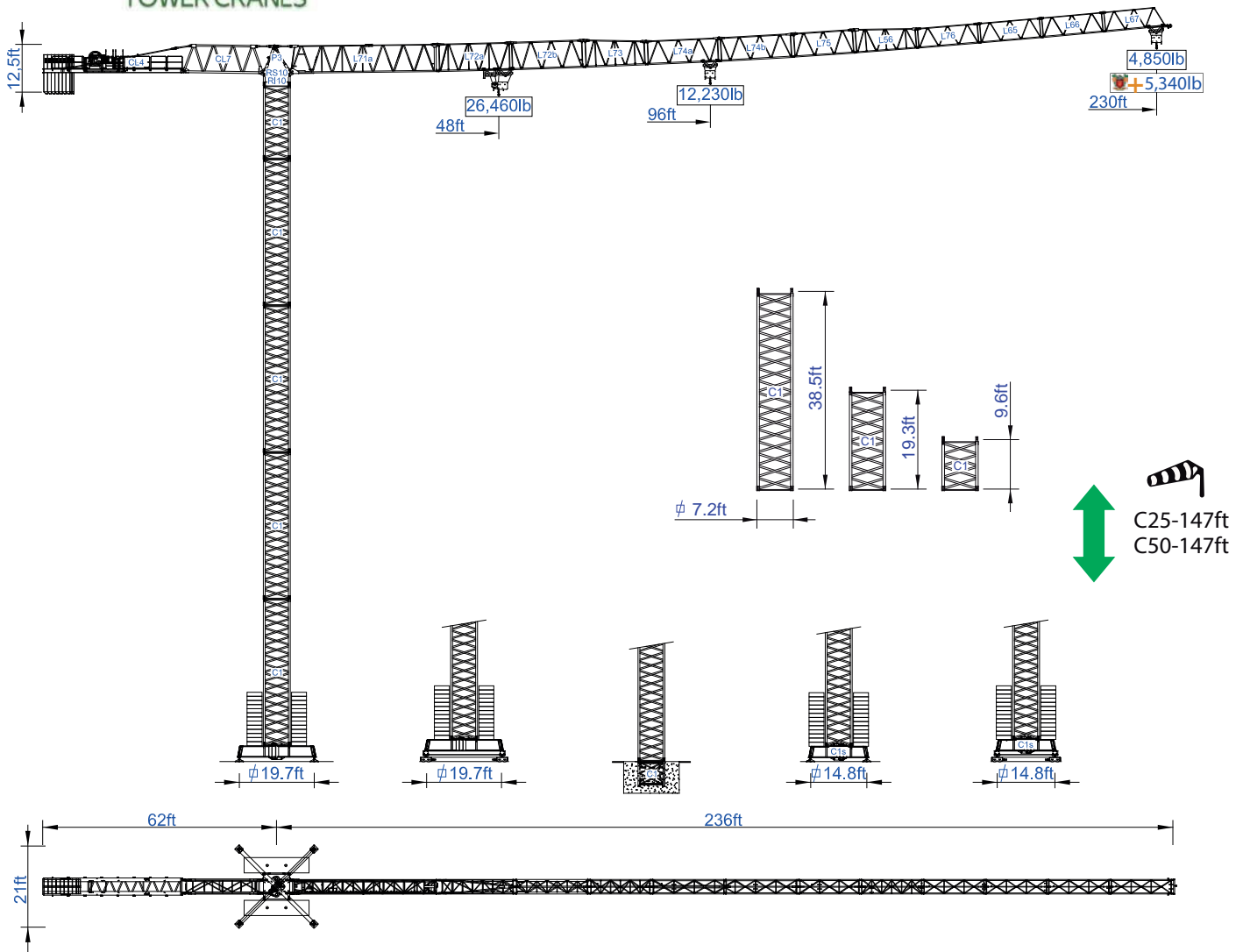




# STF 7022

Data Sheet  
Imperial



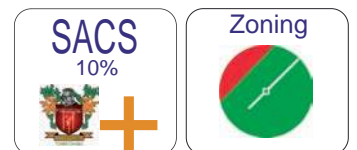
## Headquarters

3620 S. 40th Street, Phoenix, AZ, 85040 USA  
+1 (480) 993 3302

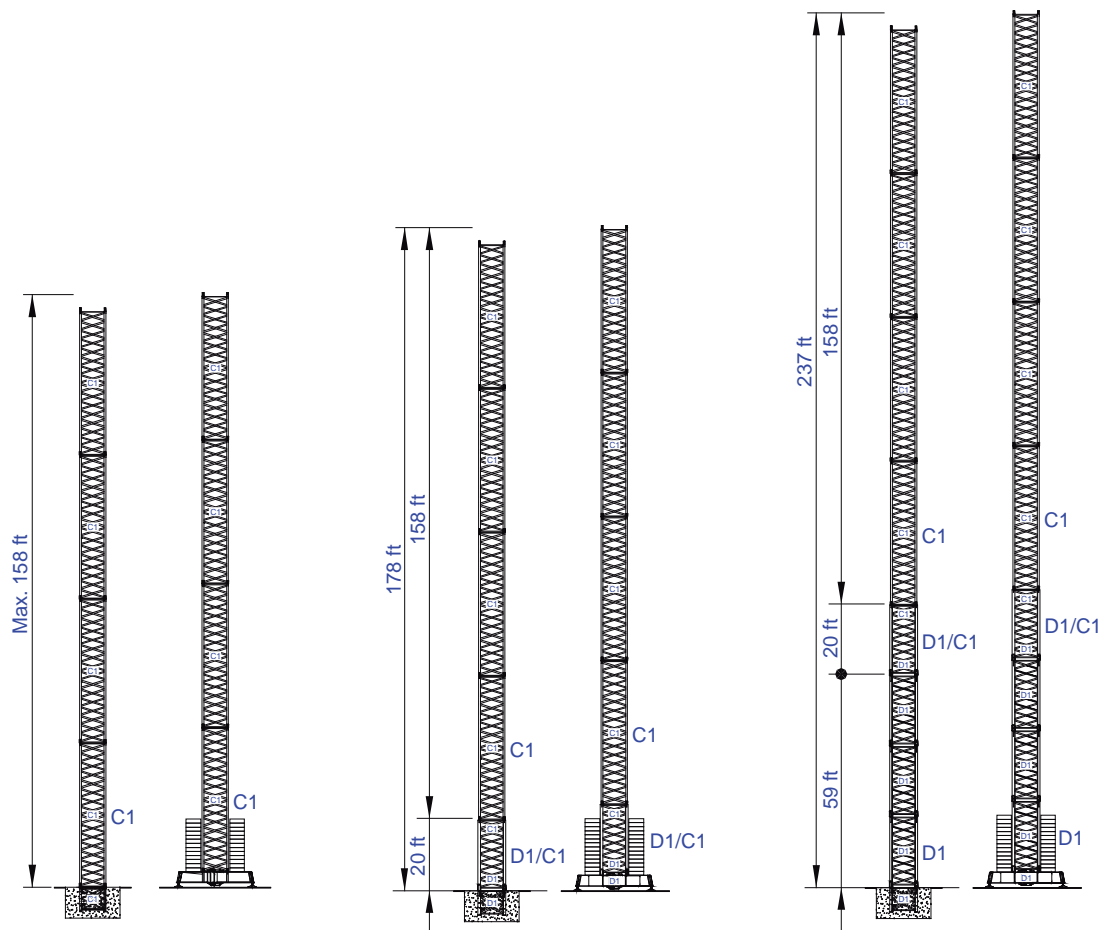
## Factory

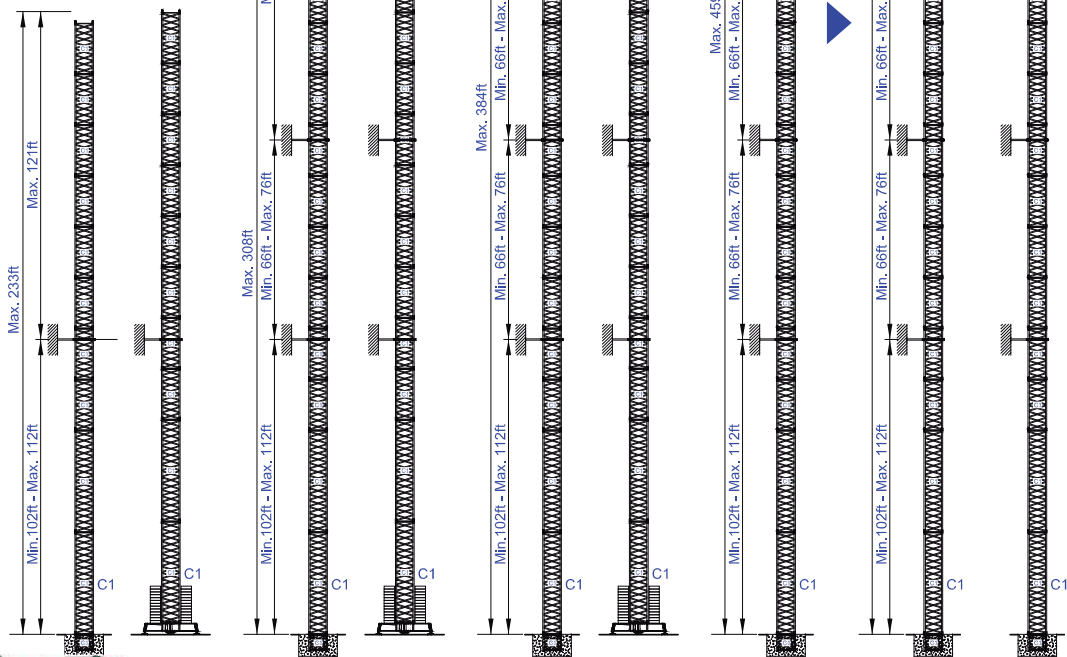
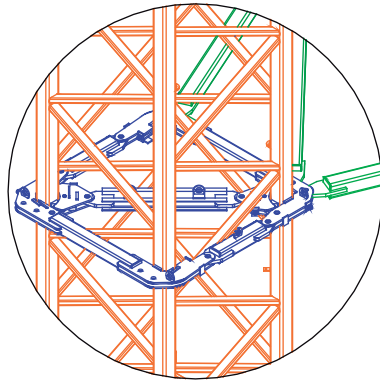
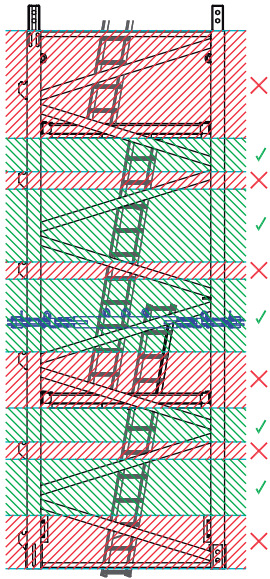
Zona Industrial de Canas de Senhorim - EN 234, 3525-040 Canas de Senhorim - Portugal  
+351 232 673 530 ✉ sales@staffordtowercranes.com

www.staffordtowercranes.com



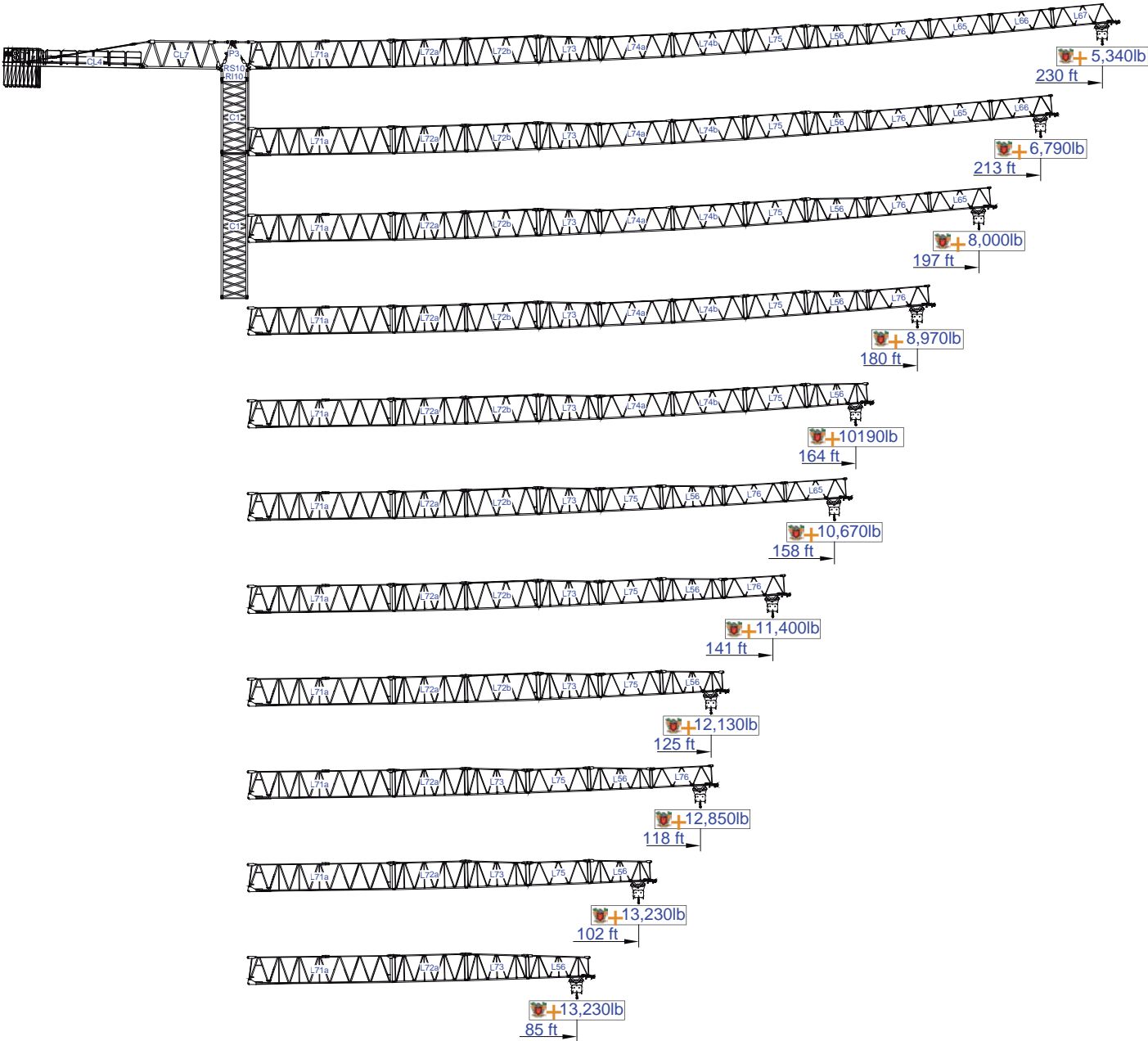
Empresa certificada no âmbito da Conceção, Fabrico e Serviço Pós-venda de Gruas Soima e componentes





More options







# SACS

## 10%








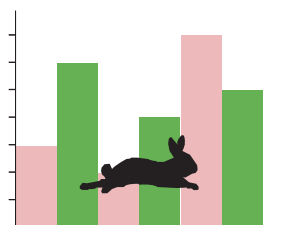
ft	ft																				ft
		26,460lb	13,230lb	33	49	59	69	85	102	118	125	141	157	164	180	197	213	230	lb		
230	35,280lb 7x4,4010lb + 2x2,205lb	48.2	95.5	13.230	13.230	13.230	13.230	13.230	13.230	11.530	10.850	9.460	8.330	7.960	7.120	6.440	5.840	5.340	4.370		
				26.460	26.460	23.280	19.640	15.450	12.610	10.560	9.880	8.490	7.360	6.990	6.150	5.470	4.870	4.370			
213	35,280lb 7x4,4010lb + 2x2,205lb	54.5	108.3	13.230	13.230	13.230	13.230	13.230	13.230	13.230	12.460	10.890	9.630	9.190	8.250	7.470	6.790				
				26.460	26.460	26.460	22.580	17.840	14.590	12.280	11.490	9.920	8.660	8.220	7.280	6.500	5.820				
197	35,280lb 7x4,4010lb + 2x2,205lb	58.1	115.2	13.230	13.230	13.230	13.230	13.230	13.230	13.230	13.230	11.640	10.320	9.850	8.860	8.000					
				26.460	26.460	26.460	24.160	19.090	15.650	13.160	12.370	10.670	9.350	8.880	7.890	7.030					
180	33,075lb 7x4,4010lb + 1x2,205lb	58.7	116.5	13.230	13.230	13.230	13.230	13.230	13.230	13.230	13.230	11.820	10.450	9.990	8.970						
				26.460	26.460	26.460	24.490	19.360	15.900	13.380	12.570	10.850	9.480	9.020	8.000						
164	33,075lb 7x4,4010lb + 1x2,205lb	59.7	118.8	13.230	13.230	13.230	13.230	13.230	13.230	13.230	13.230	12.060	10.670	10.190							
				26.460	26.460	26.460	24.960	19.730	16.200	13.650	12.810	11.090	9.700	9.220							
157	28,665lb 6x4,4010lb + 1x2,205lb	59.7	118.8	13.230	13.230	13.230	13.230	13.230	13.230	13.230	13.230	12.060	10.670								
				26.460	26.460	26.460	24.980	19.780	16.230	13.650	12.830	11.090	9.700								
141	24,255lb 5x4,4010lb + 1x2,205lb	56.8	112.9	13.230	13.230	13.230	13.230	13.230	13.230	13.230	13.230	13.050	11.400								
				26.460	26.460	26.460	23.660	18.670	15.300	12.870	12.080	10.430									
125	19,845lb 4x4,4010lb + 1x2,205lb	53.1	105.3	13.230	13.230	13.230	13.230	13.230	13.230	12.870	12.130										
				26.460	26.460	25.970	21.960	17.310	14.150	11.900	11.160										
118	17,640lb 4x4,4010lb	53.1	105.3	13.230	13.230	13.230	13.230	13.230	13.230	12.850											
				26.460	26.460	25.950	21.910	17.280	14.150	11.880											
102	15,455lb 3x4,4010lb + 1x2,205lb	51.2	101.7	13.230	13.230	13.230	13.230	13.230	13.230												
				26.460	26.460	24.960	21.100	16.620	13.580												
85	13,270lb 3x4,4010lb	50.2	99.7	13.230	13.230	13.230	13.230	13.230													
				26.460	26.460	23.740	20.040	15.760													

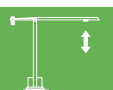




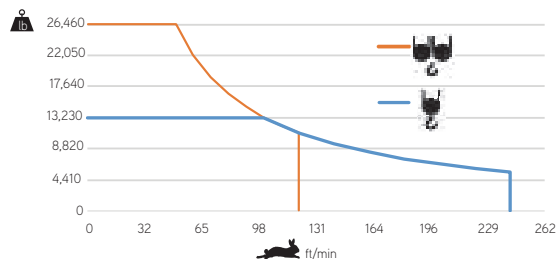
			A (ft)	B (ft)	C (ft)	lb	
Jib / Lança / Fleche / Braccio		L71A	39.30	6.20	9.50	12,850	
/ Ausleger / кливер		L72A	20.30	3.80	7.40	3,150	
		L72B	20.30	3.80	7.40	2,520	
		L73	17.20	3.80	7.40	1,810	
		L74A	20.20	3.80	6.40	1,830	
		L74B	20.20	3.80	6.40	1,580	
		L75	17.10	3.80	6.40	1,260	
		L56	17.10	3.80	6.30	1,280	
		L76	16.90	3.80	5.30	1,000	
		L65	16.80	3.80	5.30	800	
		L66	16.80	3.80	5.30	630	
		L67	16.80	3.80	5.30	580	
	Head turntable / Cabeçote / Pivot / Testa giradischi / Kopfplattenspieler		RS10	8.60	7.20	7.10	17,640
			RI10				
	Counter-jib / Contra lança / Contre-fleche		P3	8.00	4.30	2.50	2,800
		CL7	21.20	4.10	7.50	5,730	
Hoisting Winch +rope / Elevação +cabo		CL4	37.40	4.90	1.60	8,270	
		MP2	6.70	6.10	4.00	5,620	
Counterweight / Contrapeso / Contrepoids / Gegengewicht / Противовес		CP2	3.80	1.10	10.30	7x4,410 30,870	
		CP3	3.80	0.50	10.30	2x2,205 4,410	
Tower section / torre / Coupe tour / Sezione torre / Turmabschnitt / Секция башни		C1	39.40	7.20	7.20	9,260	
		C1	20.10	7.20	7.20	4,850	
		C1	10.50	7.20	7.20	2,650	
Climbing tower section		C1	10.50	7.40	7.40	3,000	
Foundation anchor / Tramo encastrar /		C1	7.50	7.10	7.10	1,870	
Base Chassis		C1	26.70	2.60	4.50	10,140	
			13.80	1.20	4.50	2x3,750 7,500	
TOTAL						17,640	
Base Chassis		C1s	21.70	2.60	4.50	7,540	
			10.40	1.20	4.50	2x4,060 8,120	
TOTAL						15,660	






		
	0 a 1 r.p.m.	3x36 ft/lbf
	0 a 196ft/min	5,5 kW
	0 a 32ft/min	2x4 kW

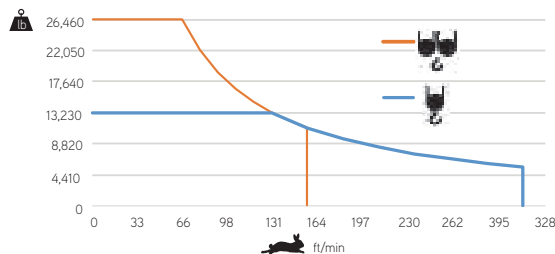



		
	0 a 242 ft/min	37 kW
	0 a 121 ft/min	






	55 kVA
	400 V +- 5% (50/60 Hz)

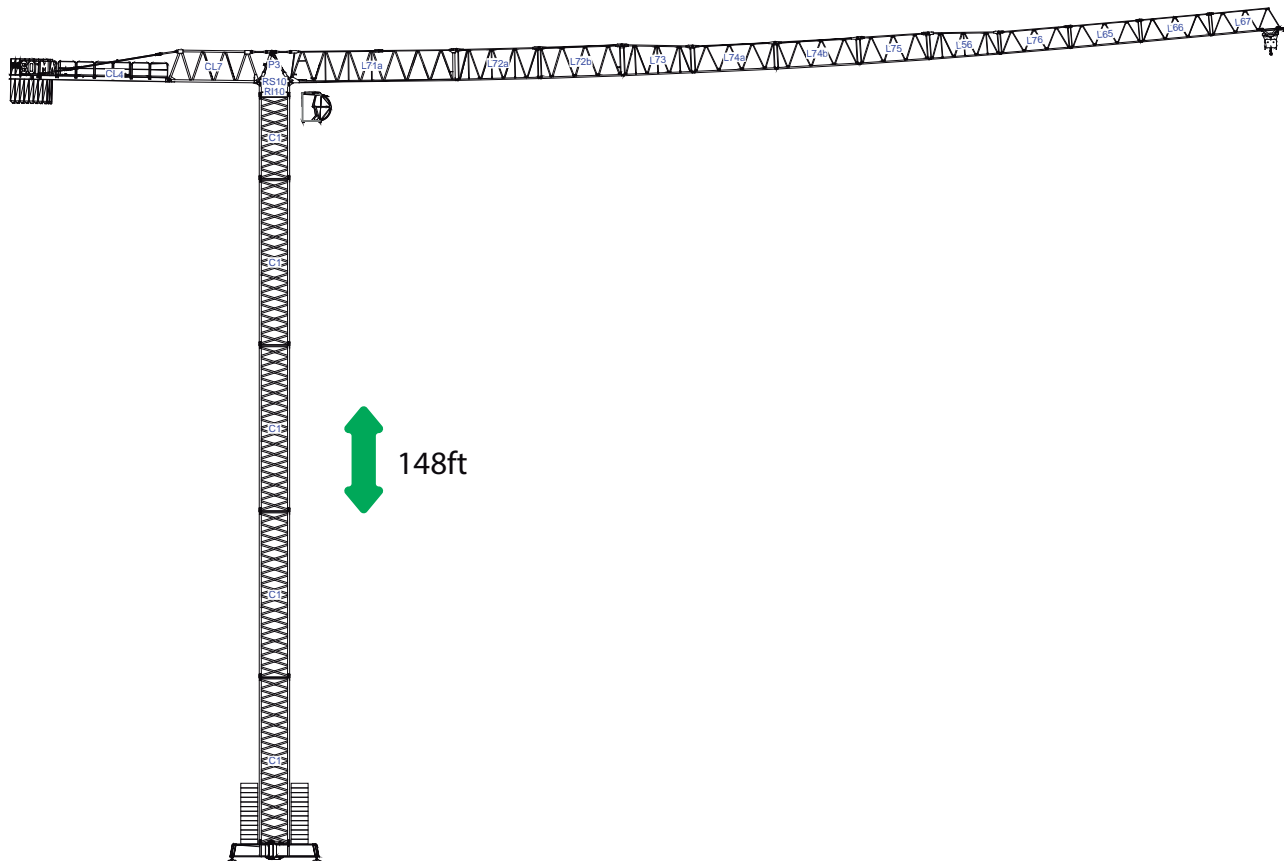
		
	0 a 312 ft/min	45 kW
	0 a 156 ft/min	



	65 kVA
	400 V +- 5% (50/60 Hz)

Max height of hoist  
 (H)Max. 177ft  
 (H)Max. 354ft  
 +  More options





8x

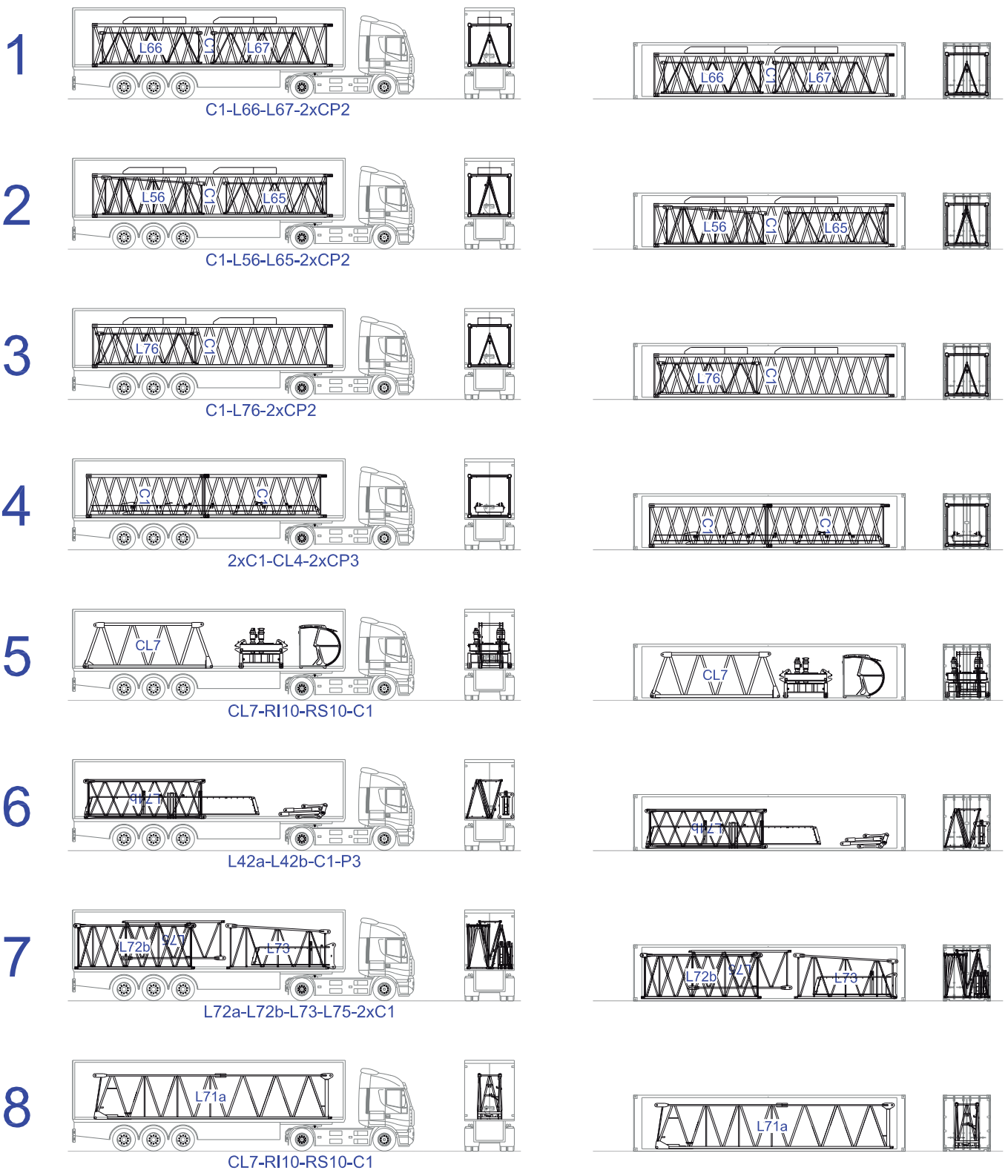


/

8x

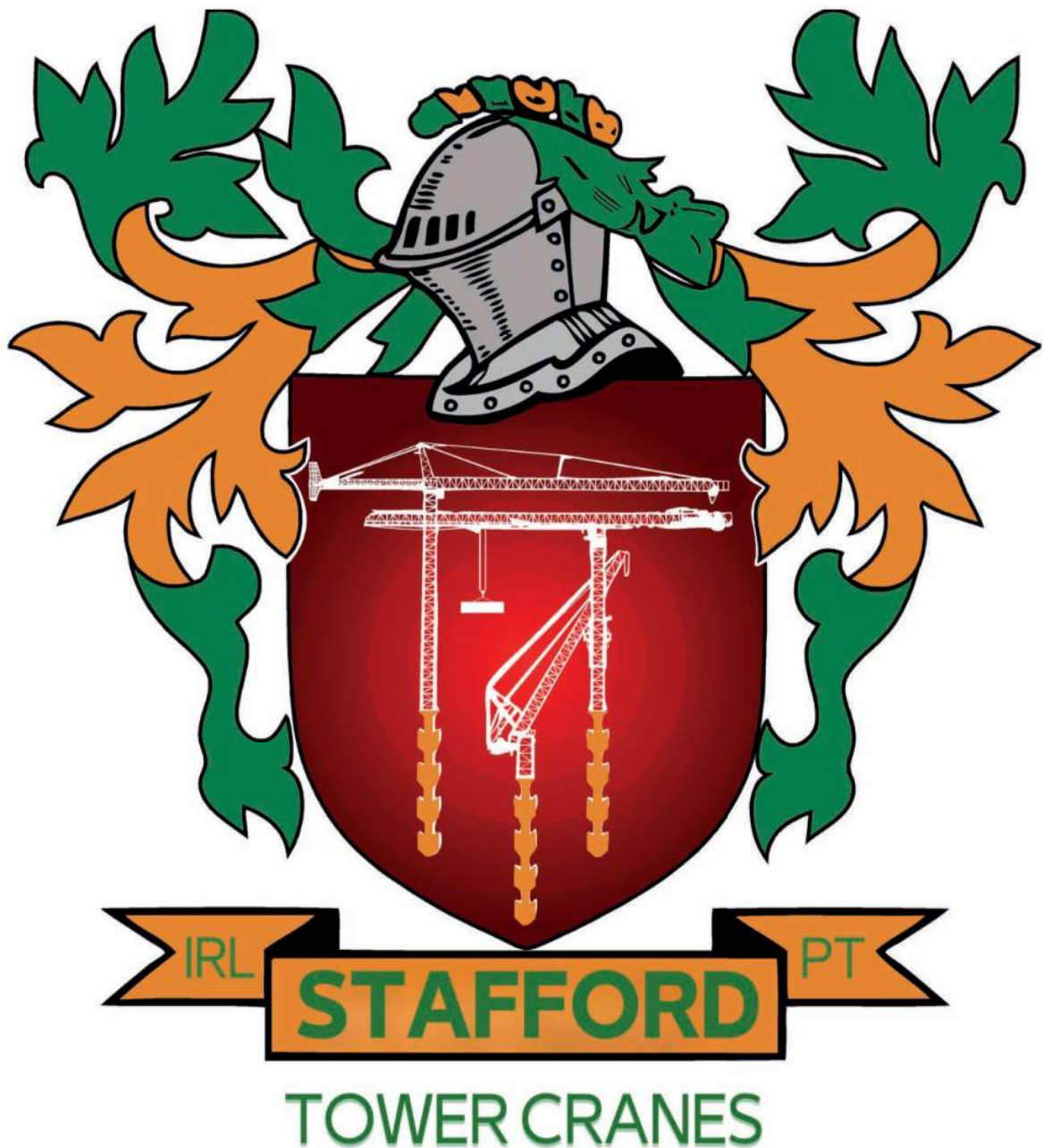













### Headquarters

 3620 S. 40th Street , Phoenix , AZ, 85040 USA

 +1 (480) 993 3302

### Factory

 Zona Industrial de Canas de Senhorim - EN 234, 3525-040 Canas de Senhorim - Portugal

 +351 232 673 530  [sales@staffordtowercranes.com](mailto:sales@staffordtowercranes.com)

 [staffordtowercranes.com](http://staffordtowercranes.com)