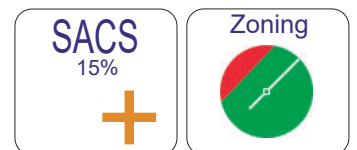
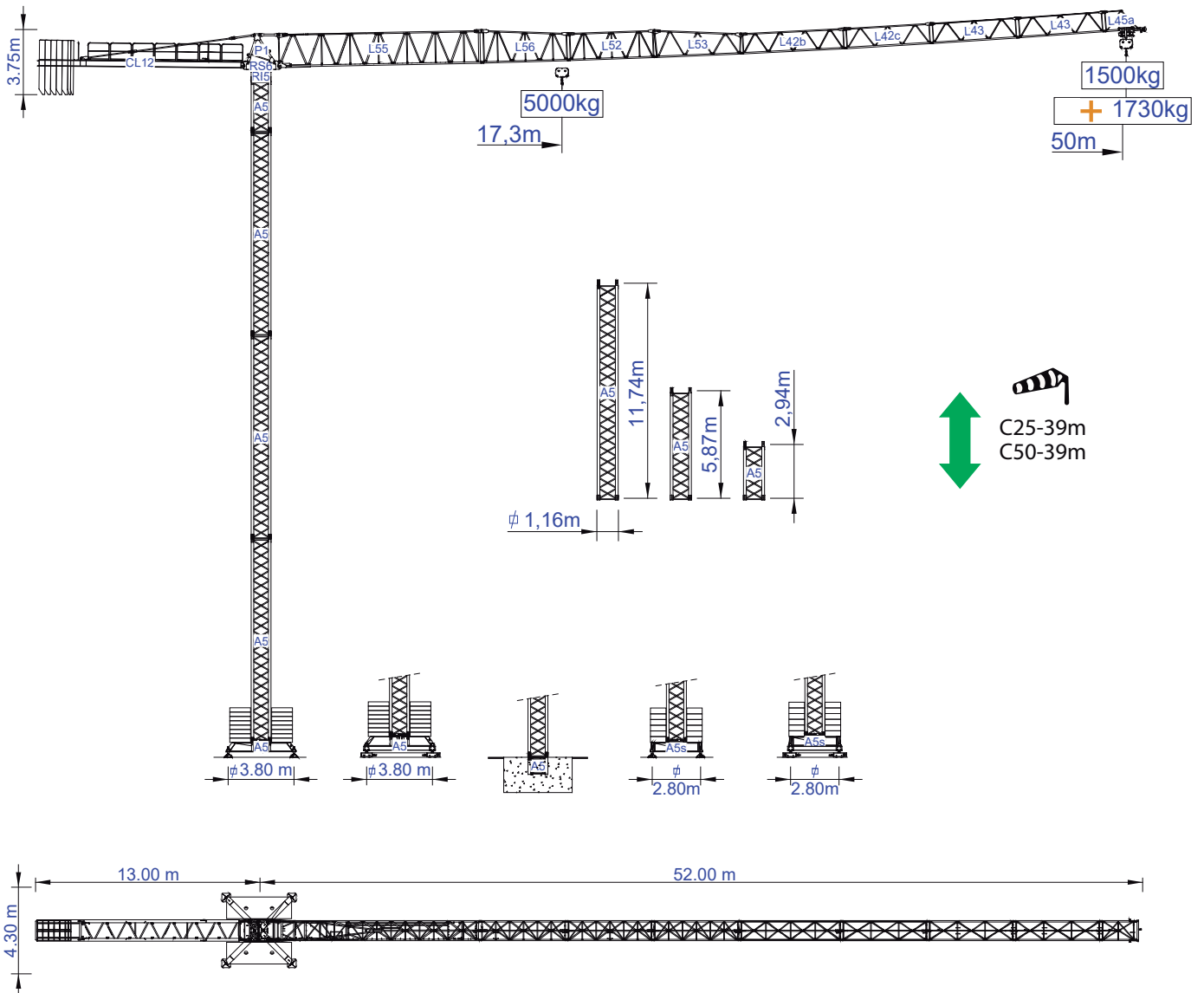




# STAFFORD TOWER CRANES

## STF 5015

Data Sheet / Catalogo / Fiche Technique / Scheda Dati  
Dentenblatt / техническая спецификация  
Metric / Métrico / Métrique / Metrico / Metrisch / метрика



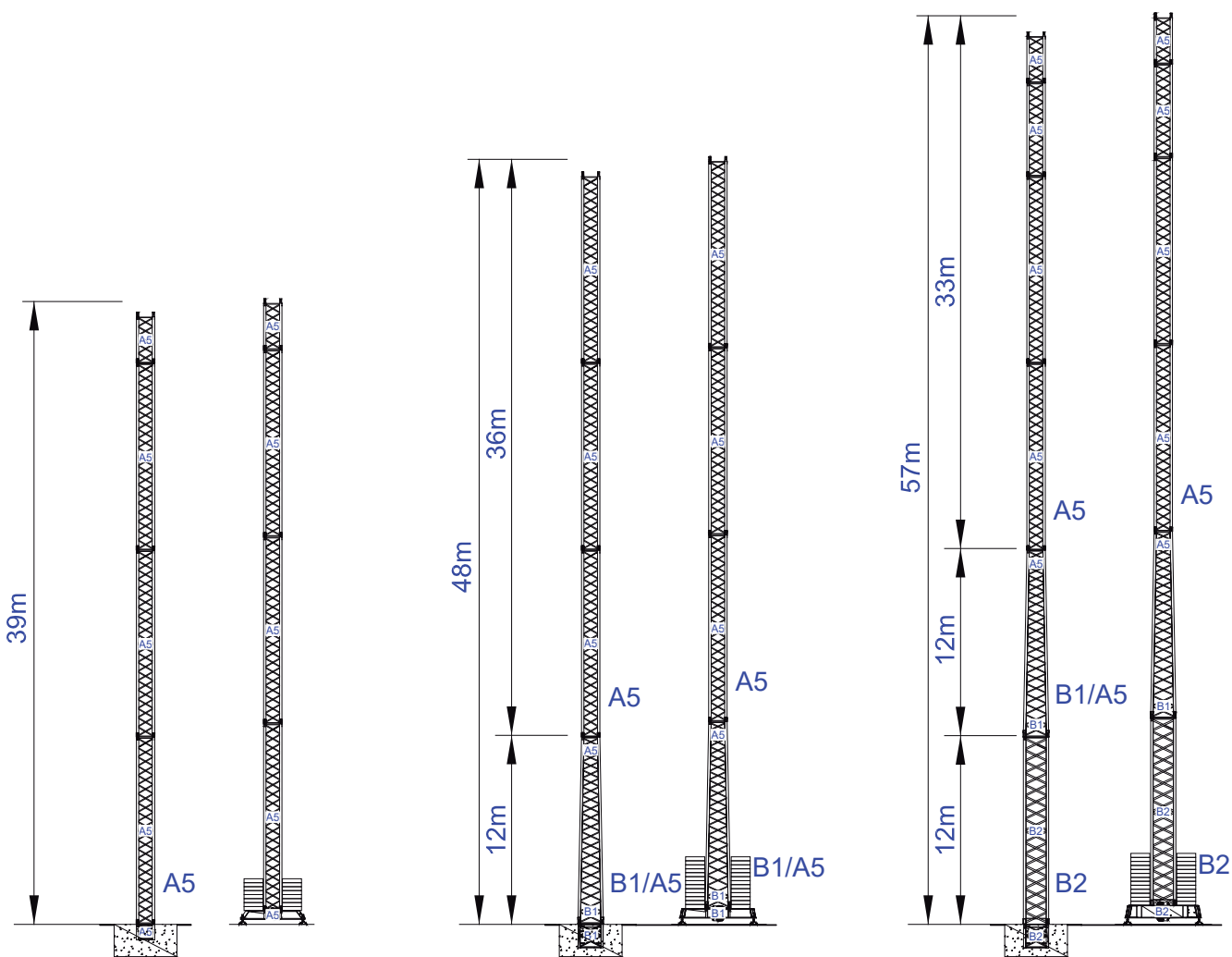
Empresa certificada no âmbito  
da Conceção, Fabrico e Serviço Pós-venda  
de Gruas Soima e componentes

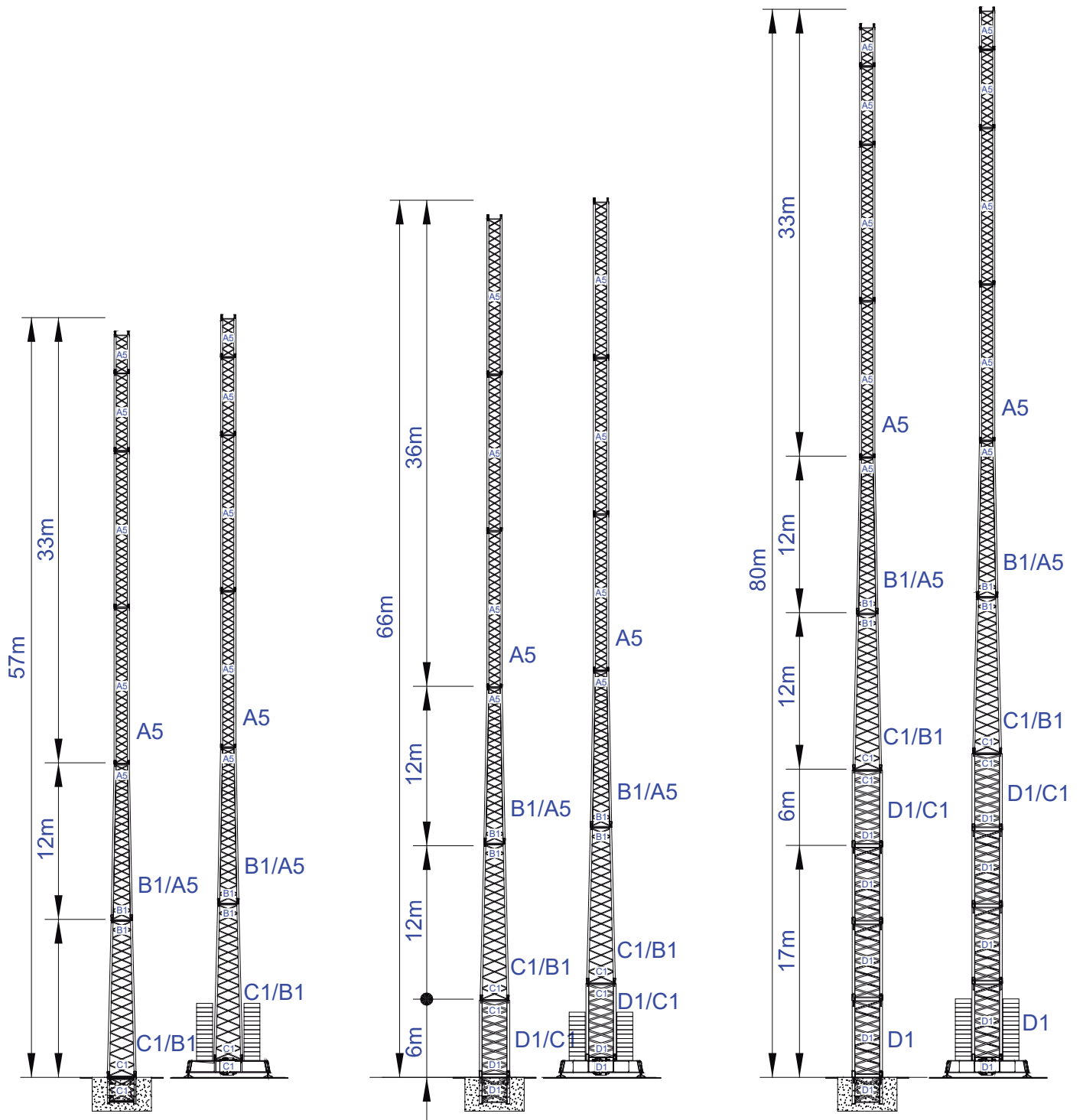
### Factory & HQ

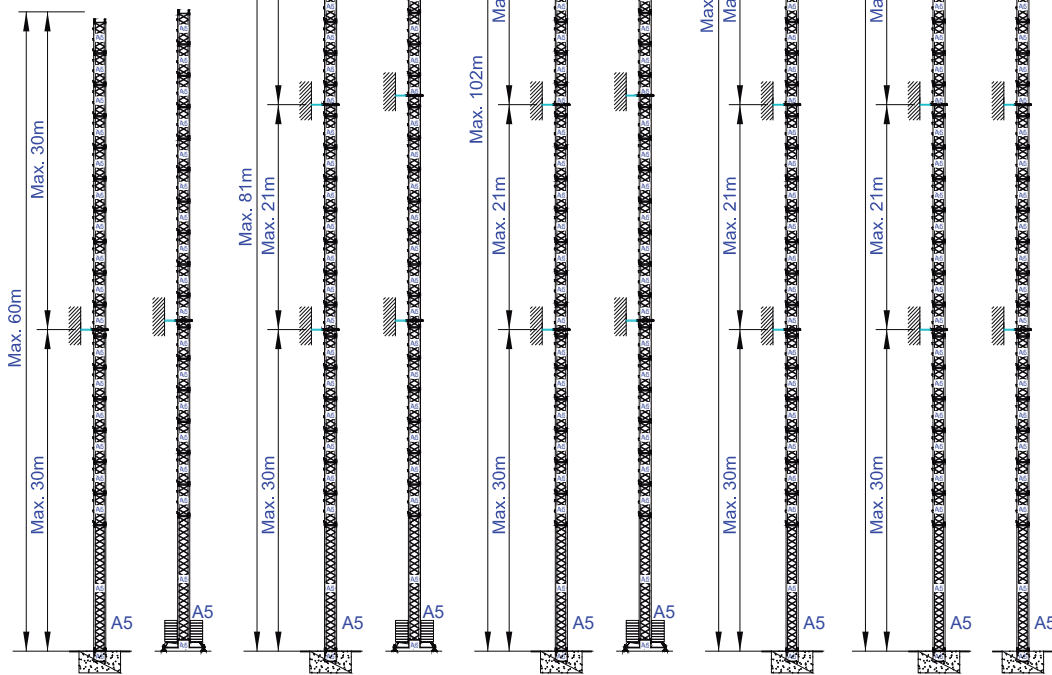
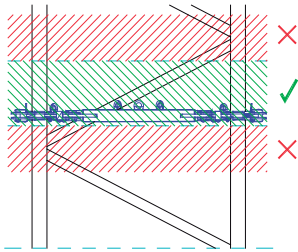
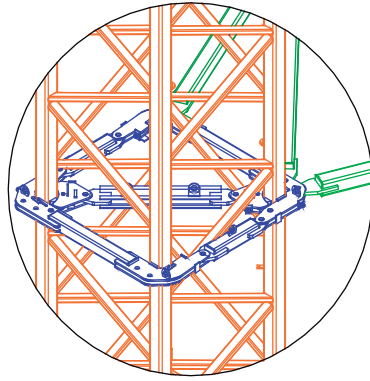
Zona Industrial de Canas de Senhorim - EN 234, 3525-040 Canas de Senhorim - Portugal

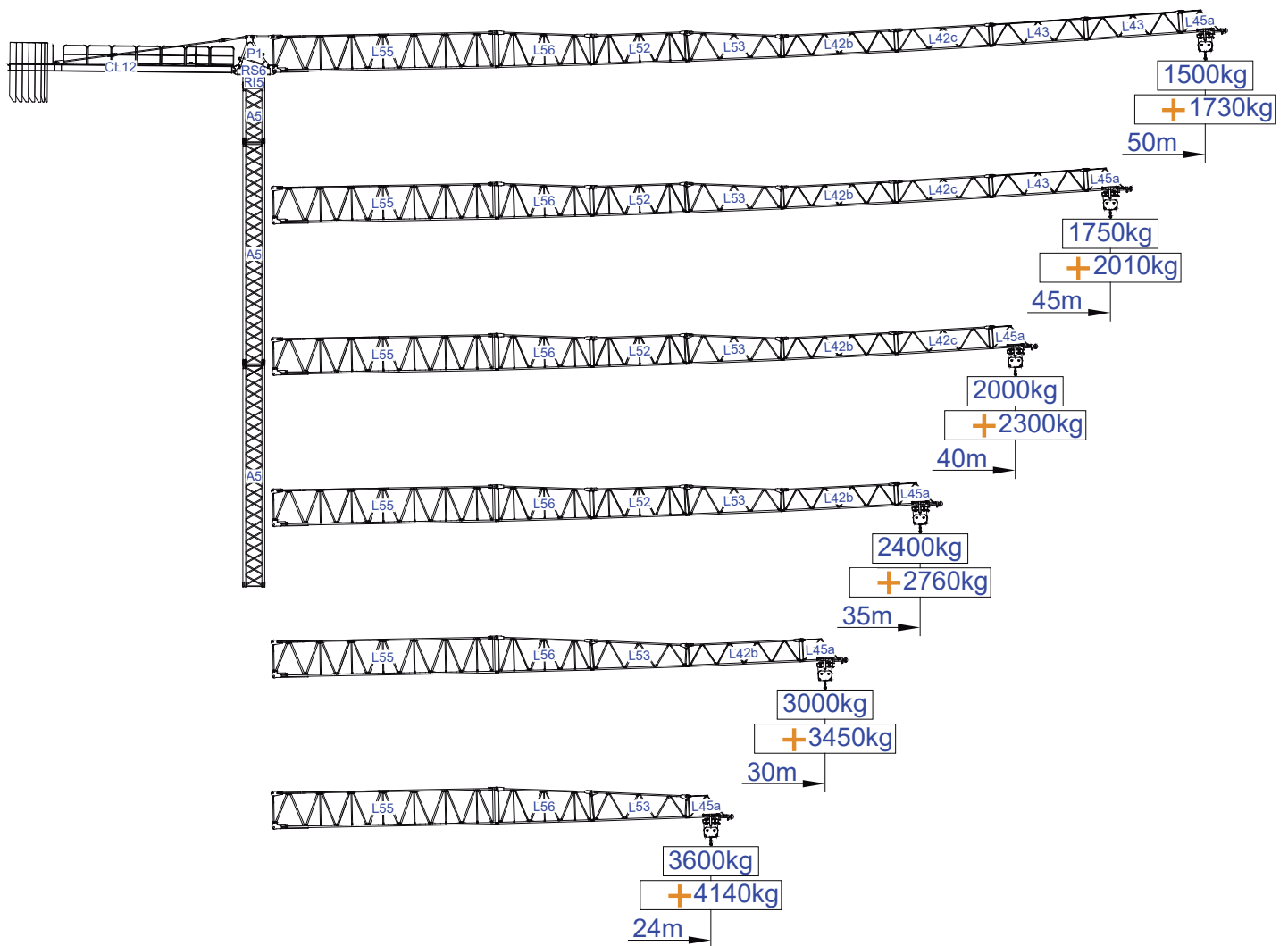
+351 232 673 530 sales@staffordtowercranes.com

staffordtowercranes.com









m				10	15	18	24	30	35	40	45	50	m
		5000 kg	2500 kg										
50	12000kg 5x2000kg + 2x1000kg	17.6	32.8	2500	2500	2500	2500	2500	2320	1980	1710	1500	kg
				5000	5000	4890	3560	2770	2320	1980	1710	1500	
45	11000kg 5x2000kg + 1x1000kg	17.9	33.4	2500	2500	2500	2500	2500	2370	2020	1750		
				5000	5000	4980	3640	2830	2370	2020	1750		
40	10000kg 4x2000kg + 2x1000kg	17.8	33.1	2500	2500	2500	2500	2500	2340	2000			
				5000	5000	4940	3600	2800	2340	2000			
35	9000kg 4x2000kg + 1x1000kg	18.2	33.8	2500	2500	2500	2500	2500	2400				
				5000	5000	5000	3690	2870	2400				
30	8000kg 3x2000kg + 2x1000kg	18.9	35.2	2500	2500	2500	2500	2500					
				5000	5000	5000	3850	3000					
24	6000kg 2x2000kg + 2x1000kg	17.8	33.1	2500	2500	2500	2500						
				5000	5000	4940	3600						
m													

SACS  
15%

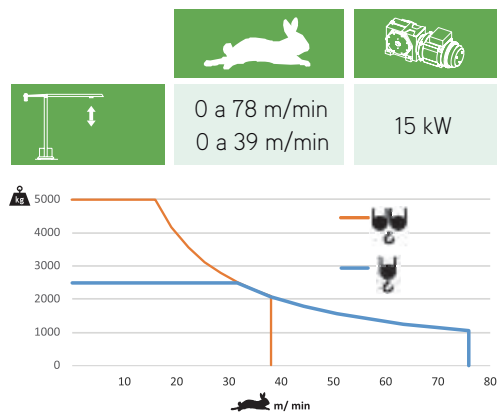
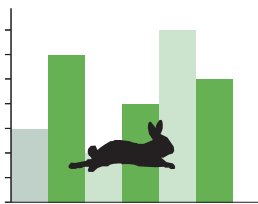


m				10	15	18	24	30	35	40	45	50	m
		5000 kg	2500 kg										
50	12000kg 5x2000kg + 2x1000kg	17.6	32.8	2500	2500	2500	2500	2500	2500	2270	1970	1730	kg
				5000	5000	5000	4100	3190	2660	2270	1970	1730	
45	11000kg 5x2000kg + 1x1000kg	17.9	33.4	2500	2500	2500	2500	2500	2500	2320	2010		
				5000	5000	5000	4180	3250	2720	2320	2010		
40	10000kg 4x2000kg + 2x1000kg	17.8	33.1	2500	2500	2500	2500	2500	2500	2300			
				5000	5000	5000	4140	3220	2700	2300			
35	9000kg 4x2000kg + 1x1000kg	18.2	33.8	2500	2500	2500	2500	2500	2500				
				5000	5000	5000	4240	3300	2760				
30	8000kg 3x2000kg + 2x1000kg	18.9	35.2	2500	2500	2500	2500	2500					
				5000	5000	5000	4430	3450					
24	6000kg 2x2000kg + 2x1000kg	17.8	33.1	2500	2500	2500	2500						
				5000	5000	5000	4140						
m													

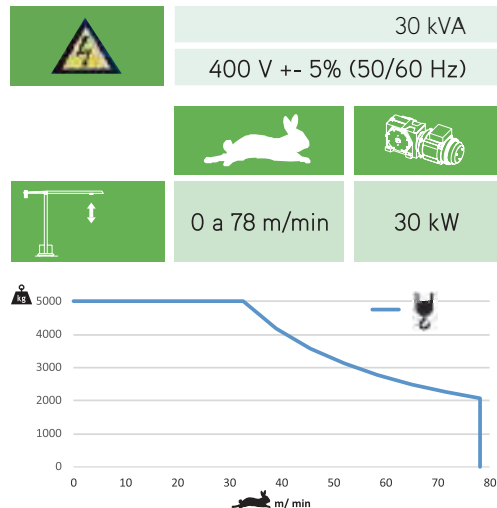


			A (mm)	B (mm)	C (mm)	kg (±5%)	
Jib / Lança / Fleche / Braccio		L55	11950	1210	2600	3100	
/ Ausleger / кливер		L56	5200	1160	1930	590	
		L52	5200	1160	1650	535	
		L53	5200	1160	1650	510	
		L42b	6080	1160	1210	520	
		L42c	5180	1160	1210	370	
		L43	5100	1160	1210	2x260 520	
		L45a	2100	1160	1210	120	
	Head turntable		RS6 RI5	2250	1350	2050	2640
		P1	1660	1220	1720	720	
Counter-jib / Contra lança / Contre-flèche		CL12	12000	1250	560	2560	
Counterweight / Contrapeso / Contrepoids / Gegengewicht / Противовес		CP2	1160	330	3140	5x2000 10000	
		CP3	1160	165	3140	2x1000 2000	
Tower section / torre / Coupe tour / Sezione torre / Turmabschnitt / Секция башни		A5	11985	1160	1160	3080	
		A5	6075	1160	1160	1660	
		A5	3120	1160	1160	990	
Climbing tower section		A5	3090	1385	1385	1040	
Foundation anchor / Tramo encastrar /		A5	1275	1160	1160	450	
Base Chassis		A5	5530	500	820	1250	
			2270	360	820	2x635 1270	
						TOTAL	2520
Base Chassis		A5s	4110	500	820	1150	
			1955	360	820	2x580 1160	
						TOTAL	2310

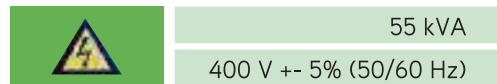




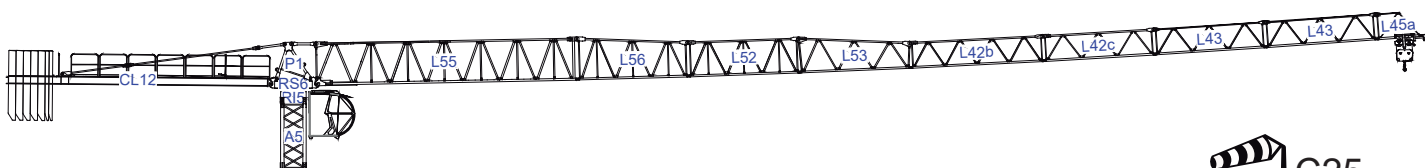
0 a 1 r.p.m.	2x4 daN.m
	0 a 60 m/min
	3 kW
	15 m/min
	2x3 kW



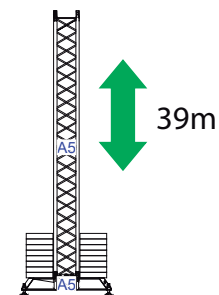
Max height of hoist  
 (H)Max. 132m + More options



Transport / Transporte / Transport / Trasporto / Transport / Транспорт



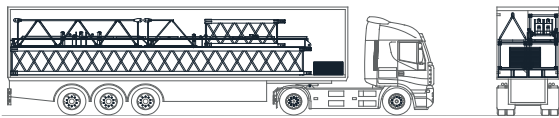
C25



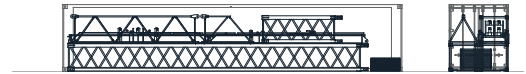
**STF 5015**



1

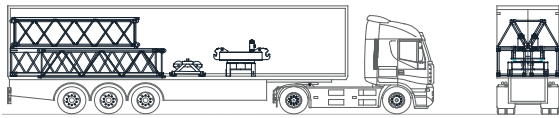


1xA5-12m-2xA5-6m-1xA5-3m-L43-L45a-CI12-4xCP2

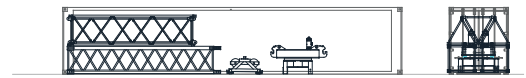


1xA5-12m-2xA5-6m-1xA5-3m-L43-L45a-CI12-4xCP2

2

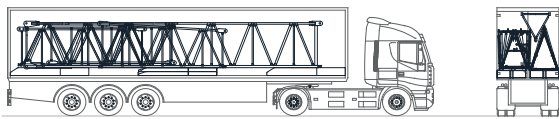


2xA5-6m-L42C-L43-L42B-RS6-RI5-TP1-5xCP2

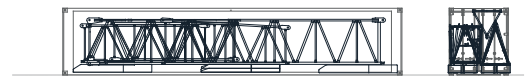


2xA5-6m-L42C-L43-L42B-RS6-RI5-TP1

3



L55-L56-L52-L53-5XCP2-2XCP3



L55-L56-L52-L53-5XCP2-2XCP3





