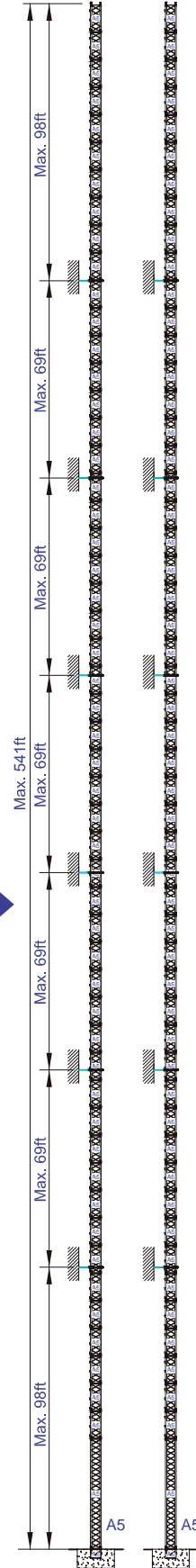
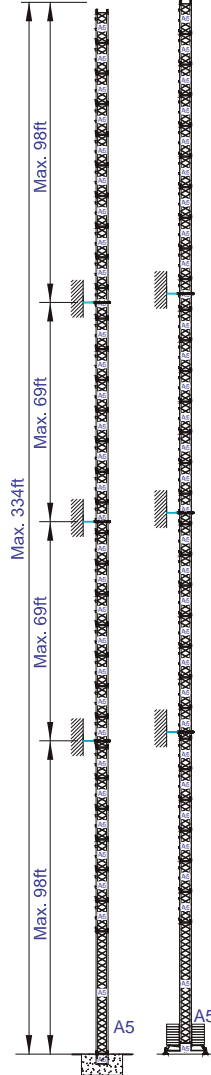
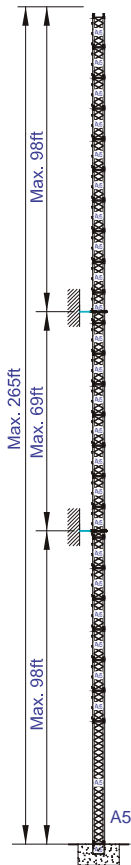
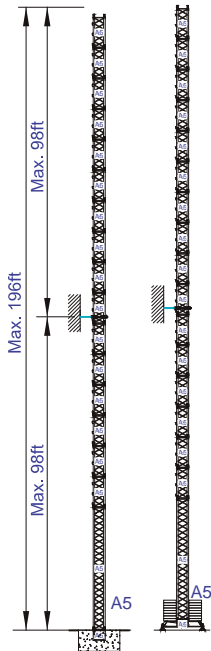
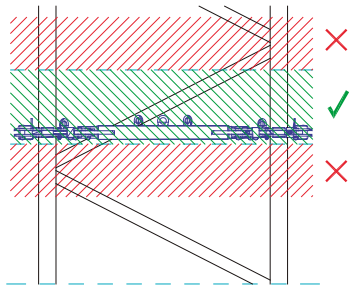
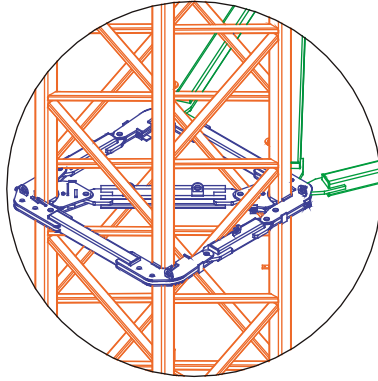
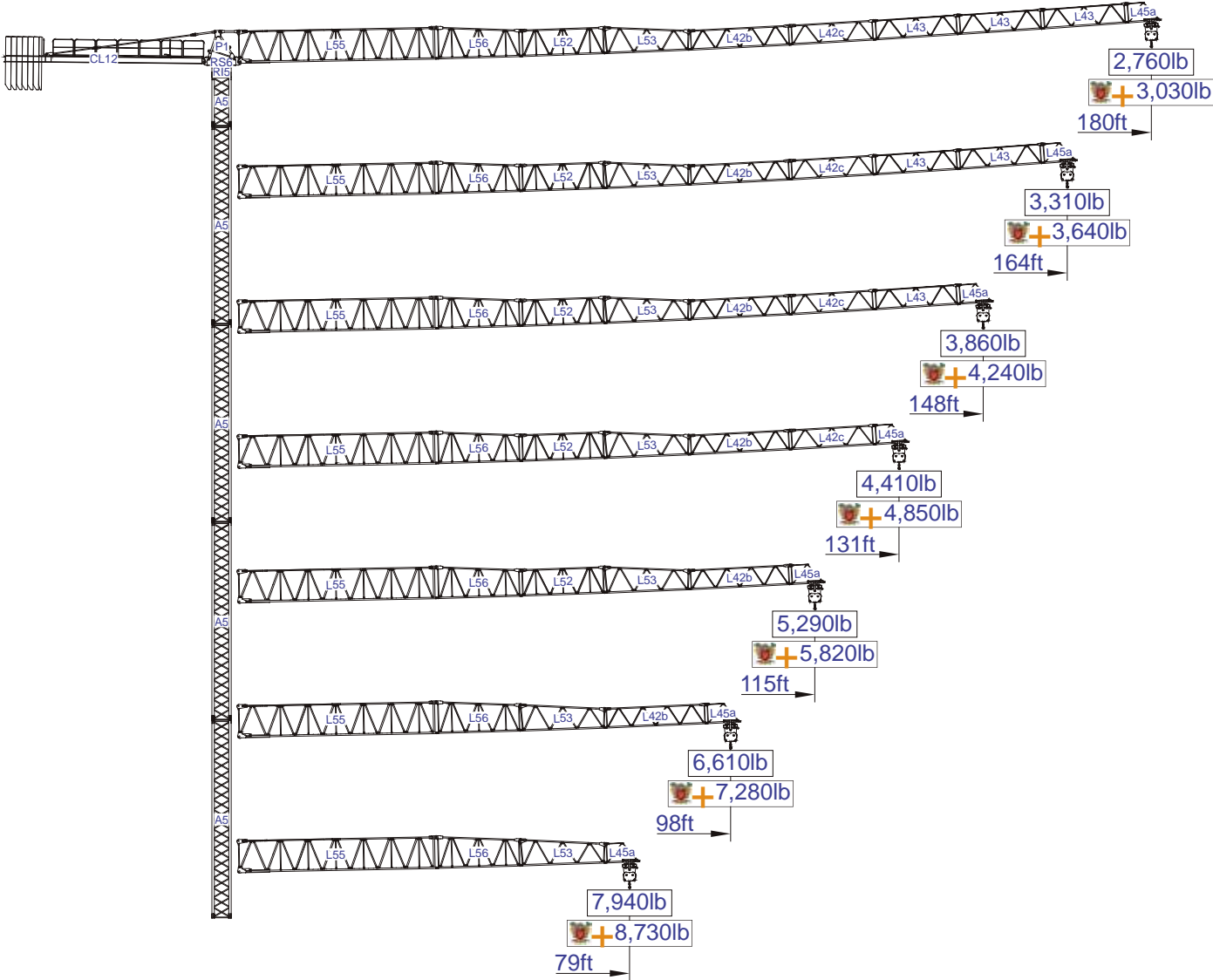


More options



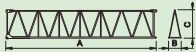




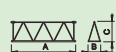




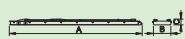


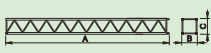
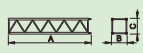
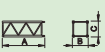
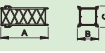
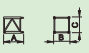
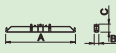
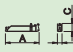
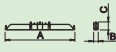
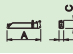


SACS 10%








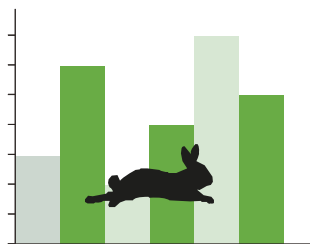
Span (ft)	Configuration	Tower Crane		SACS											lb
		1	2	33	49	59	79	98	115	131	148	164	180		
180	28,665lb 6x4,410lb + 1x2,205lb	54,0	101,3	5,510	5,510	5,510	5,510	5,510	5,240	4,490	3,900	3,420	3,030		
				11,020	11,020	11,010	8,050	6,260	5,240	4,490	3,900	3,420	3,030		
164	26,460lb 6x4,410lb	56,7	106,5	5,510	5,510	5,510	5,510	5,510	5,510	4,750	4,150	3,640			
				11,020	11,020	11,020	8,490	6,620	5,550	4,750	4,150	3,640			
148	24,255lb 5x4,409lb + 1x2,204lb	58,0	108,8	5,510	5,510	5,510	5,510	5,510	5,510	4,870	4,240				
				11,020	11,020	11,020	8,710	6,790	5,700	4,870	4,240				
131	22,050lb 5x4,409lb	57,6	108,2	5,510	5,510	5,510	5,510	5,510	5,510	4,850					
				11,020	11,020	11,020	8,660	6,740	5,670	4,850					
115	19,845lb 4x4,409lb + 1x2,204lb	59,0	110,8	5,510	5,510	5,510	5,510	5,510	5,510						
				11,020	11,020	11,020	8,880	6,940	5,820						
98	17,640lb 4x4,409lb	61,6	115,7	5,510	5,510	5,510	5,510	5,510							
				11,020	11,020	11,020	9,310	7,280							
79	13,227lb 3x4,409lb	58,1	109,1	5,510	5,510	5,510	5,510								
				11,020	11,020	11,020	8,730								






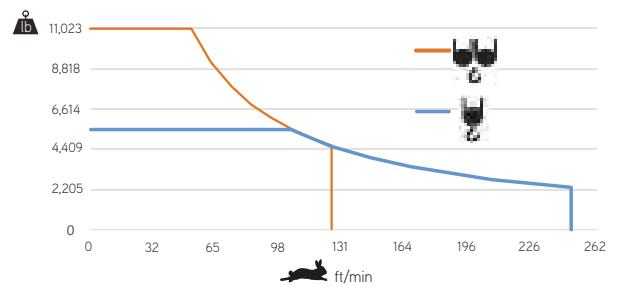
			A (ft)	B (ft)	C (ft)	lb(±5%)	
Jib		L55	39.21	3.97	8.53	6,834	
		L56	17.06	3.81	6.33	1,301	
		L52	17.06	3.81	5.41	1,179	
		L53	17.06	3.81	5.41	1,124	
		L42b	19.95	3.81	3.97	1,146	
		L42c	16.99	3.81	3.97	816	
		L43	16.73	3.81	3.97	2x573 1,146	
		L45a	6.89	3.81	3.97	265	
Head turntable		RS6 RI5	7.38	4.43	6.73	5,820	
		P1	5.45	4.00	5.64	1,587	
Counter-jib		CL12	39.38	4.10	1.84	5,644	
Counterweight		CP2	3.81	1.08	10.30	6x4,410 26,460	
		CP3	3.81	0.54	10.30	1x2,205 2,205	
Tower section		A5	39.33	3.81	3.81	6,790	
		A5	19.93	3.81	3.81	3,660	
		A5	10.24	3.81	3.81	2,183	
Climbing tower section		A5	10.14	4.54	4.54	2,293	
Foundation anchor		A5	4.18	3.81	3.81	992	
Base Chassis		A5	18.15	1.64	2.69	2,756	
			7.45	1.18	2.69	2x2,161 2,800	
						TOTAL	5,556
Base Chassis		A5s	13.49	1.64	2.69	3,77	
			6.41	1.18	2.69	2x1,279 2,557	
						TOTAL	5,093





	
	0 a 1 r.p.m. 2x29 ft/lbf
	0 a 196 ft/min 3 kW
	0 a 49 ft/min 2x3 kW

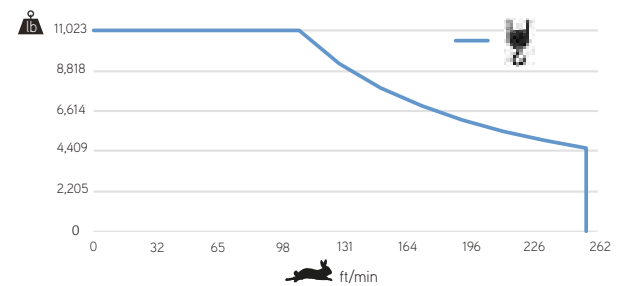


	
	0 a 256 ft/min 15kW





	55 kVA
	400 V +- 5% (50/60 Hz)

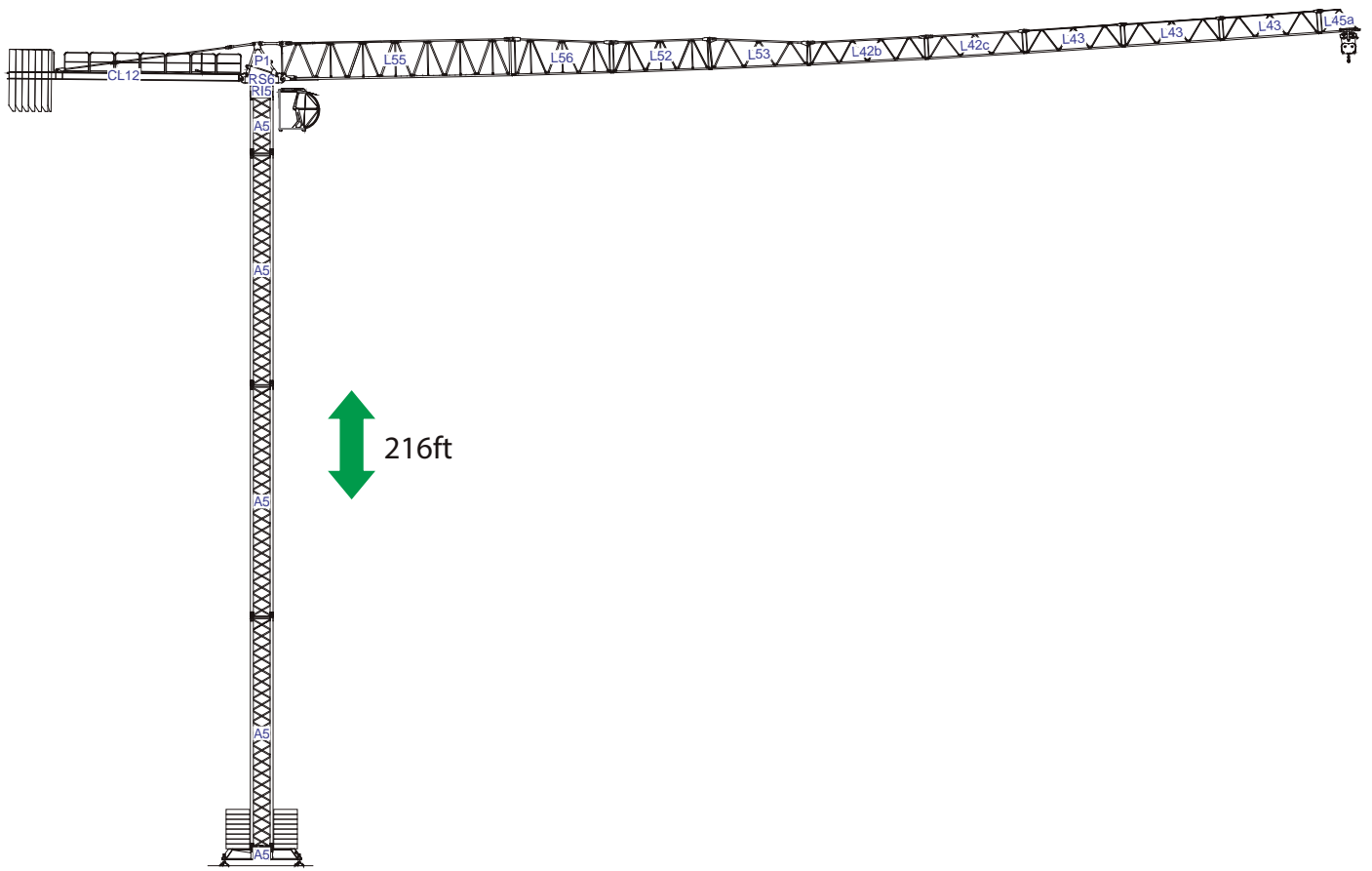
	
	0 a 256 ft/min 30 kW

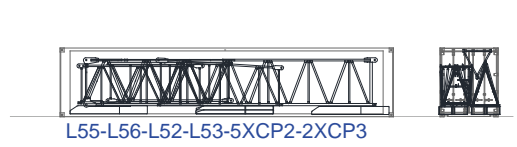
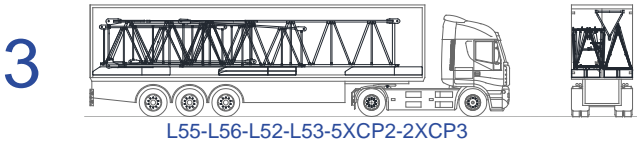
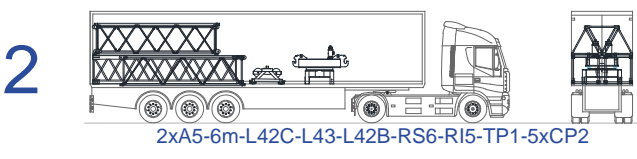
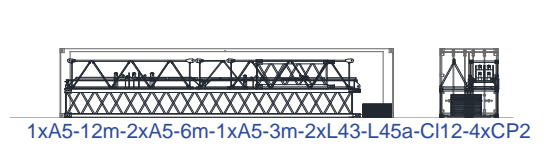
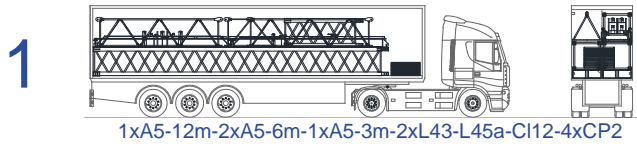


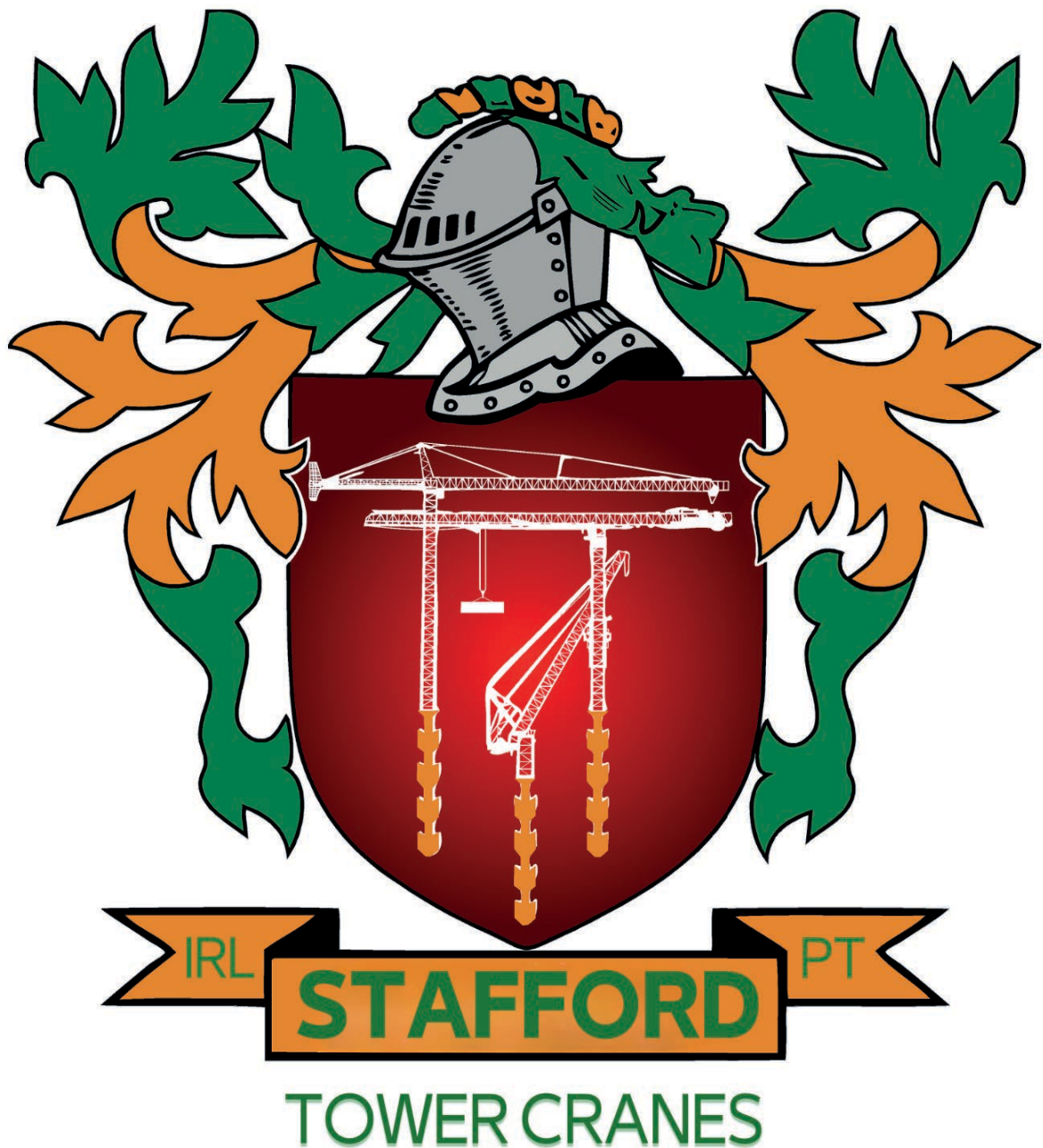
	55 kVA
	400 V +- 5% (50/60 Hz)

Max height of hoist
 (H)Max. 433ft +  More options










Headquarters

 3620 S. 40th Street , Phoenix , AZ, 85040 USA

 +1 (480) 993 3302

Factory

 Zona Industrial de Canas de Senhorim - EN 234, 3525-040 Canas de Senhorim - Portugal

 +351 232 673 530  info@staffordsoima.com

 staffordsoima.com