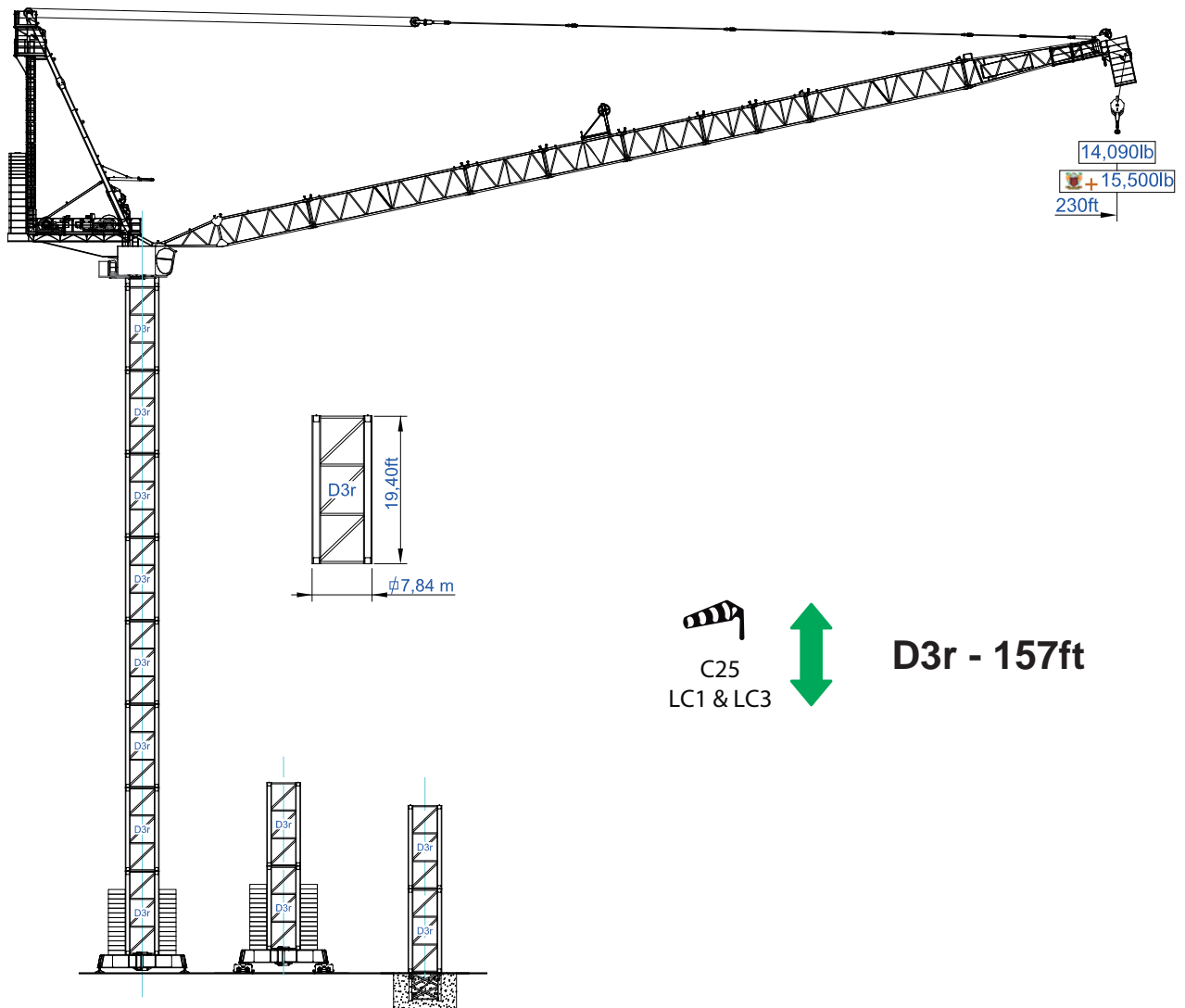




# STL 757

## 42T - 92 590lb

Data Sheet / Catalogo / Fiche Technique / Scheda Dati  
 Dentenblatt / техническая спецификация  
 Imperial



C25  
 LC1 & LC3

↕

**D3r - 157ft**

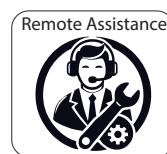
### Headquarters

📍 3620 S. 40th Street, Phoenix, AZ, 85040 USA  
 📞 +1 (480) 993 3302

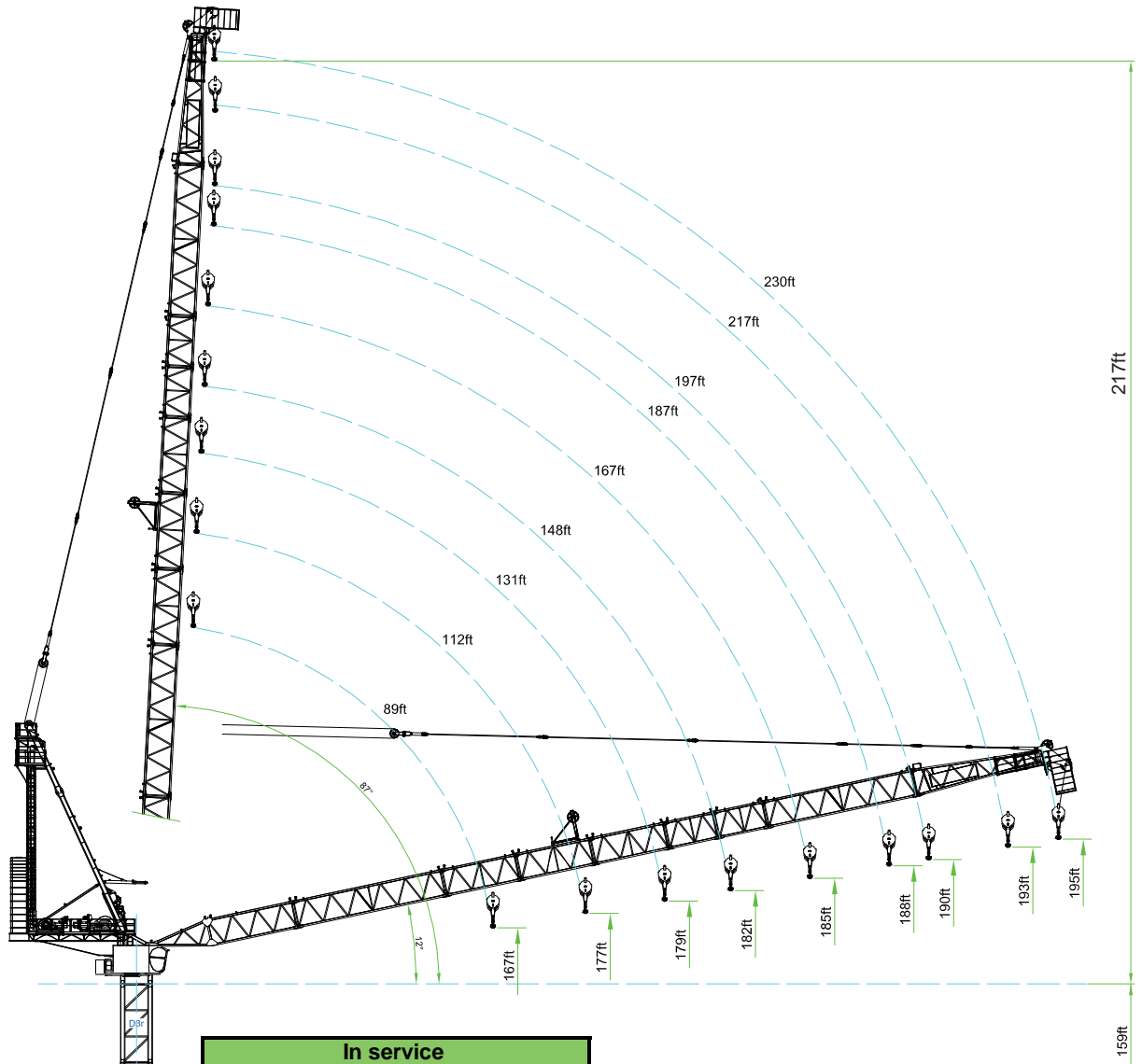
### Factory

📍 Zona Industrial de Canas de Senhorim - EN 234, 3525-040 Canas de Senhorim - Portugal  
 📞 +351 232 673 530 ✉ sales@staffordtowercranes.com

🌐 www.staffordtowercranes.com

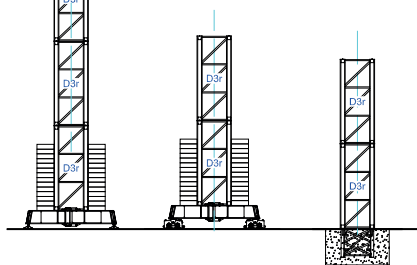


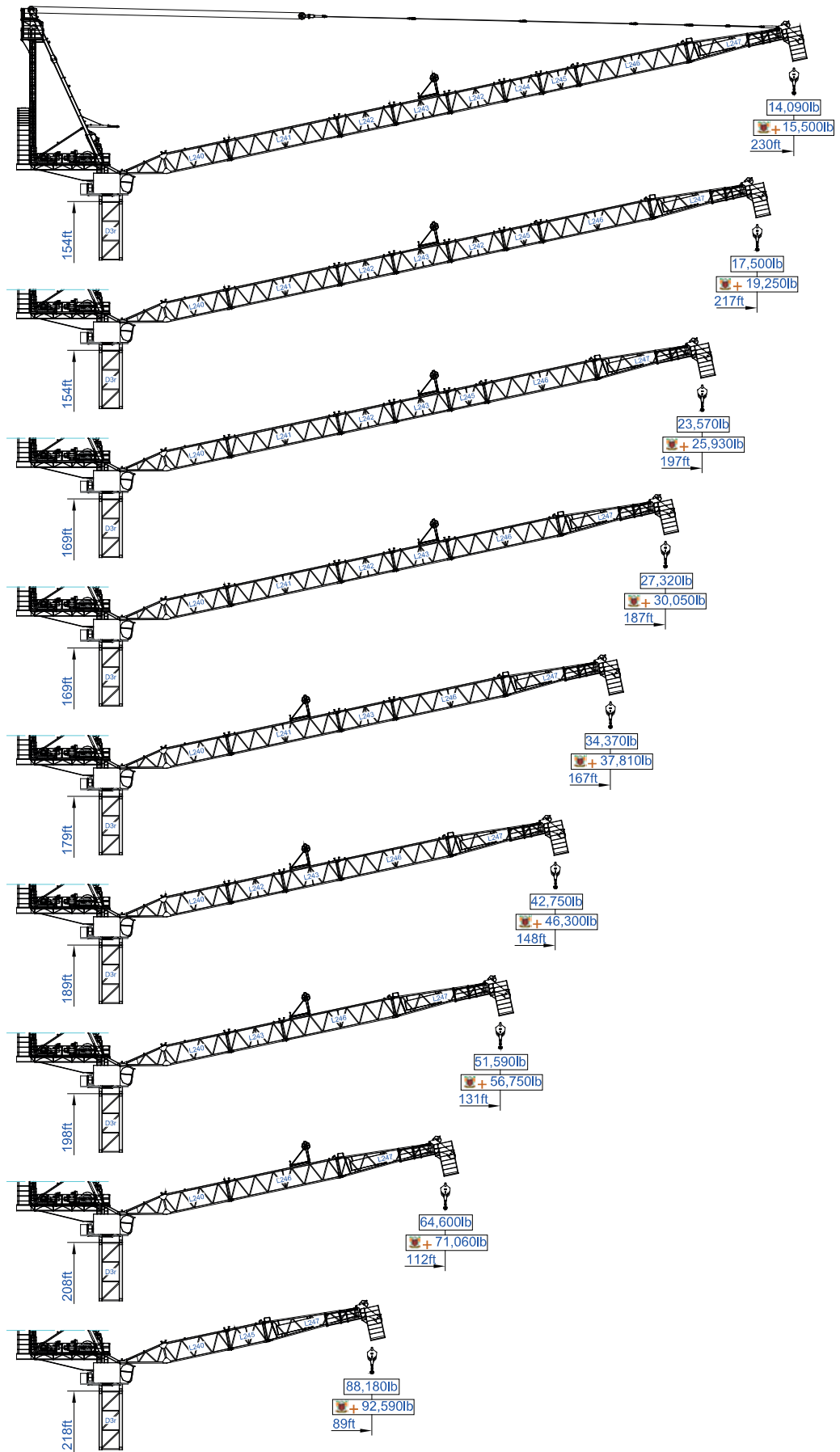
Empresa certificada no âmbito da Conceção, Fabrico e Serviço Pós-venda de Gruas Soima e componentes



In service		
Max Angle 87°		
Jib(ft)	L (ft) II Fall	L (ft) I Fall
230	22	24
217	21	23
197	20	21
187	19	21
167	18	19
148	17	18
131	15	17
112	14	15
89	13	14

Out of Service		
Jib (ft)	Degree (°)	(ft)
230	72	77
217	72	73
197	72	66
187	73	62
167	73	55
148	73	50
131	73	44
112	71	42
89	71	37







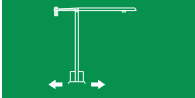



Model	Capacity (kg)	Capacity (lb)	Jib Length (m)																	Unit									
			79	89	98	112	121	131	141	148	157	167	174	187	197	207	217	223	230										
230	182 980	113,2	131,2	46 300																	lb								
				55 120				49 380		43 830		39 000		35 960		31 590		28 240		26 080		22 200		19 470		17 330		15 080	
217	174 830	90,2	132,9	46 300																	lb								
				77 160				69 670		57 520		50 440		45 170		39 970		36 530		32 470		29 320		26 870		23 240		20 680	
197	166 670	80,4	136,2	46 300																	lb								
				92 590				82 390		72 110		59 900		53 350		47 090		41 760		39 130		34 880		31 150		29 280		25 220	
187	158 730	80,4	137,8	46 300																	lb								
				92 590				84 480		73 720		60 300		53 460		47 660		42 950		39 260		35 360		31 880		29 780		26 010	
167	150 580	82,0	139,4	46 300																	lb								
				92 590				84 480		73 720		61 880		55 070		48 740		43 850		40 790		36 880		33 070					
148	142 640	82,0	142,7	46 300																	lb								
				92 590				85 690		74 410		63 290		56 110		50 530		45 280		41 450		42 750							
131	134 480	83,7	131,2	46 300																	lb								
				92 590				86 990		75 570		64 620		57 340		51 590													
112	118 390	83,7	111,5	46 300																	lb								
				92 590				87 440		77 070		64 600																	
89	110 230	83,7	88,6	46 300																	lb								
				92 590				88 180																					

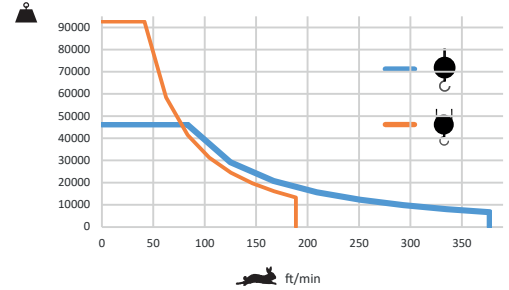
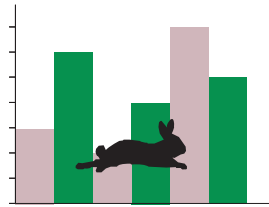



Model	Capacity (kg)	Capacity (lb)	Jib Length (m)																	Unit									
			79	89	98	112	121	131	141	148	157	167	174	187	197	207	217	223	230										
230	182 980	113,2	131,2	46 300																	lb								
				55 120				54 318		48 213		42 900		39 560		34 750		31 060		28 690		24 420		21 420		19 060		16 590	
217	174 830	90,2	132,9	46 300																	lb								
				77 160				76 640		63 270		55 480		49 690		43 970		40 180		35 720		32 250		29 560		25 560		22 750	
197	166 670	80,4	136,2	46 300																	lb								
				92 590				90 630		79 320		65 890		58 690		51 800		45 940		43 040		38 370		34 270		32 210		27 740	
187	158 730	80,4	137,8	46 300																	lb								
				92 590				92 930		81 090		66 330		58 810		52 430		43 190		38 900		35 070		32 760		28 610			
167	150 580	82,0	139,4	46 300																	lb								
				92 590				92 930		81 090		68 070		60 580		53 610		48 240		44 870		40 570		36 380					
148	142 640	82,0	142,7	46 300																	lb								
				92 590				81 850		69 620		61 720		55 580		49 810		45 600											
131	134 480	83,7	131,2	46 300																	lb								
				92 590				83 130		71 080		63 070		56 750															
112	118 390	83,7	111,5	46 300																	lb								
				92 590				96 180		84 780		71 060																	
89	110 230	83,7	88,6	46 300																	lb								
				92 590				92 590																					

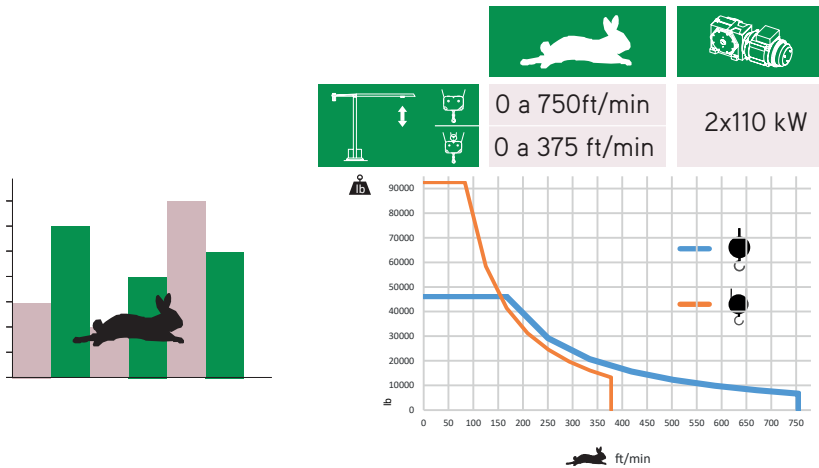



	
	0 a 0,7 r.p.m.      4x7,5 kW
	4,9 ft/min      110 kW
	On Request

	
	0 a 375 ft/min 0 a 187 ft/min      110 kW



	315 kVA 400/480V +-5% (50/60 Hz)
--------------------------------------------------------------------------------------	-------------------------------------

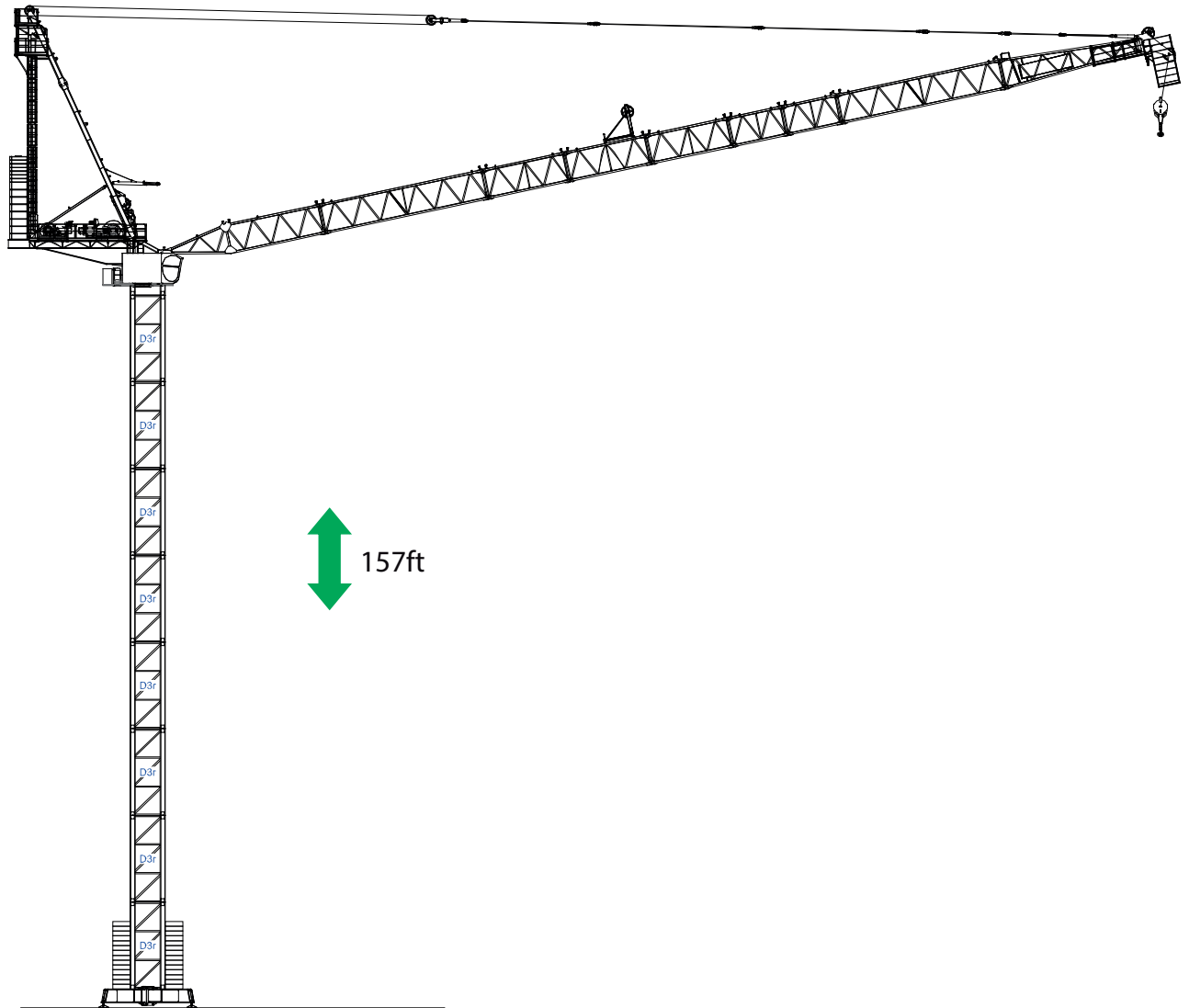


	450 kVA 400/480V +-5% (50/60 Hz)
-------------------------------------------------------------------------------------	-------------------------------------

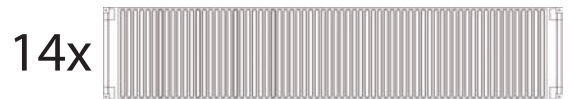




C25  
LC1 & LC3



/

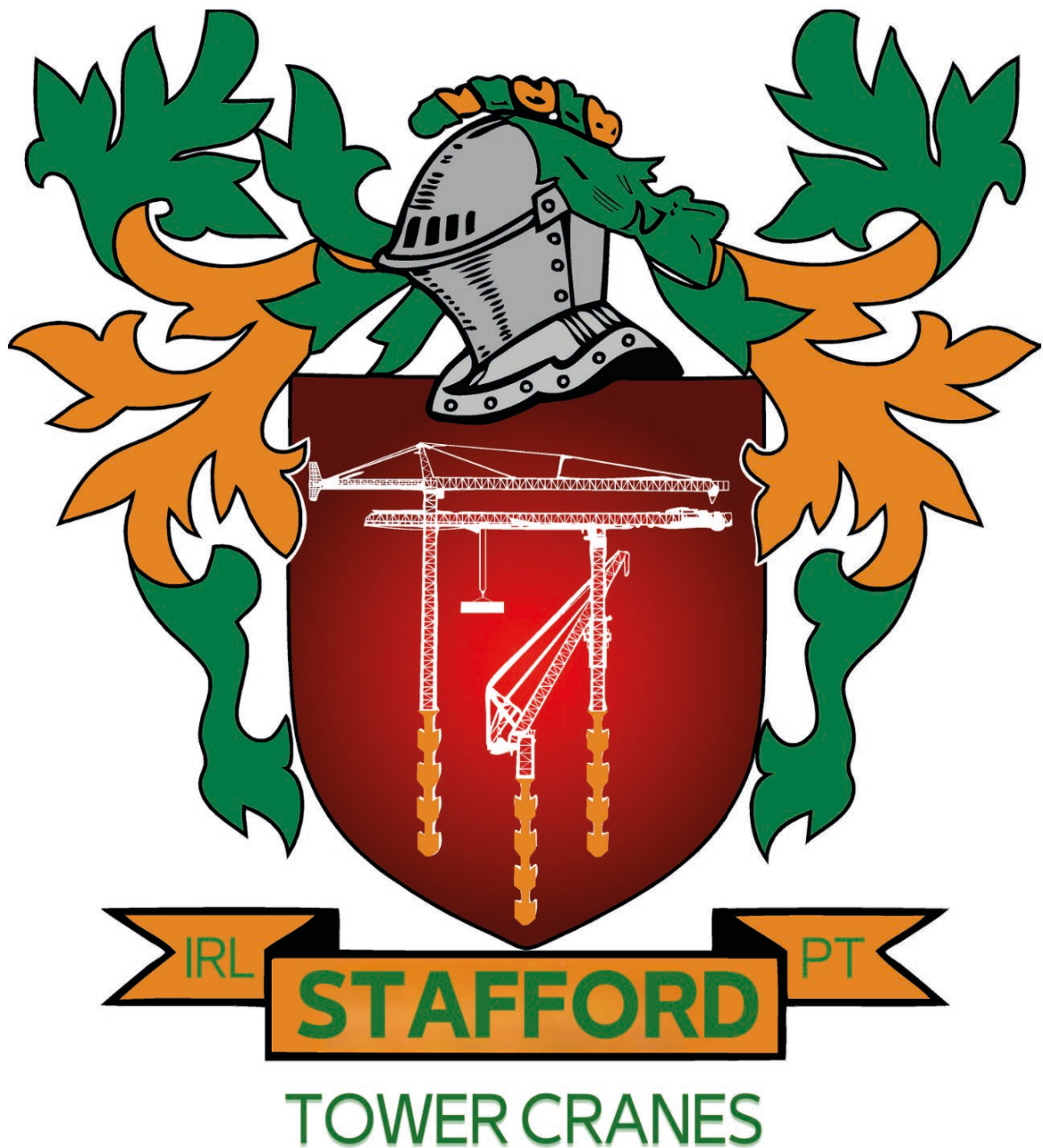


40' High Cube




**STL 757**





### *Headquarters*

 3620 S. 40th Street , Phoenix , AZ, 85040 USA

 +1 (480) 993 3302

### *Factory*

 Zona Industrial de Canas de Senhorim - EN 234, 3525-040 Canas de Senhorim - Portugal

 +351 232 673 530  [sales@staffordtowercranes.com](mailto:sales@staffordtowercranes.com)

 [staffordtowercranes.com](http://staffordtowercranes.com)